



Talbot Place, Tilstock Road
Whitchurch



Prices From £239,995



56 Merrial Street
Newcastle under Lyme
ST5 2AW
01782 625734



Plot 299 Talbot Place, Tilstock Road Whitchurch SY13 2BY

This delightful two-bedroom home, located in the highly desirable area of Whitchurch, offers beautifully balanced accommodation ideal for first-time buyers, downsizers, or those seeking a stylish low-maintenance property. Thoughtfully designed, the ground floor boasts a spacious open-plan kitchen and dining area, flooded with natural light and perfectly suited for both everyday living and entertaining. Elegant French doors open onto the rear garden, creating a seamless connection between indoor and outdoor spaces. A well-proportioned lounge provides a cosy yet refined retreat, while the convenience of a downstairs WC completes the ground-floor layout.

The first floor continues to impress with two generously sized double bedrooms, each offering a calm and comfortable environment with ample space for furnishings. A contemporary family bathroom serves the upper level, finished to a high standard.

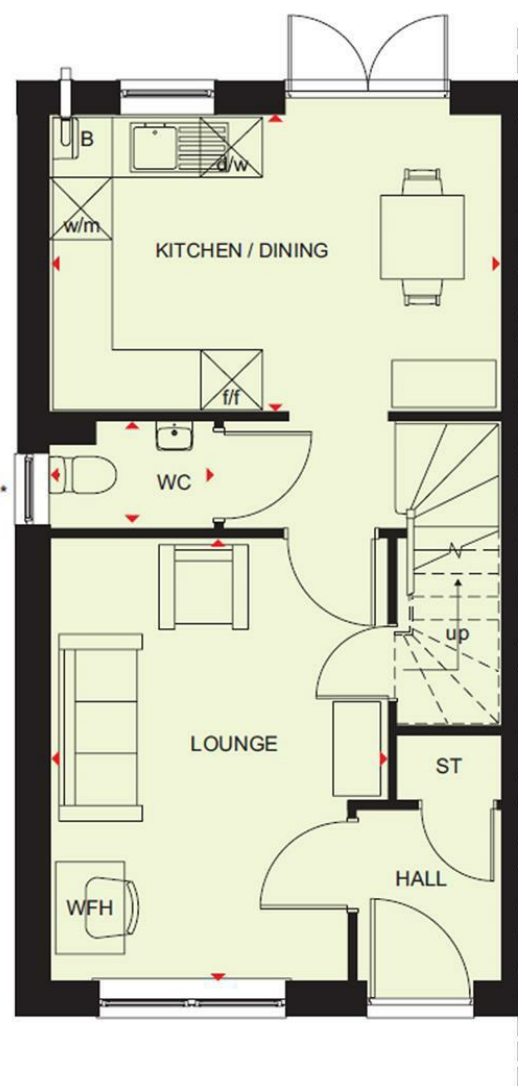
This charming home combines modern living with comfort and practicality, all set within a sought-after location, making it a fantastic opportunity for a wide range of buyers.

Prices From £239,995



Lounge	10'7" x 13'11" (3.237 x 4.264)
Kitchen/Dining	14'2" x 9'4" (4.330 x 2.860)
WC	5'2" x 3'4" (1.578 x 1.034)
Bedroom One	14'2" x 9'4" (4.330 x 2.860)
Bedroom Two	14'2" x 10'3" (4.330 x 3.134)
Bathroom	6'9" x 7'1" (2.075 x 2.165)
AML Disclosure	





Stephenson Browne Estate Agents

Newcastle
56 Merrial Street, Newcastle under Lyme
Staffordshire, ST5 2AJ
Tel: 01782 625734

Sandbach
38 High Street, Sandbach
Cheshire, CW11 1AN
Tel: 01270 763200

Alsager
13 Crewe Road, Alsager
Stoke on Trent, ST7 2EW
Tel: 01270 883130

NOT TO SCALE These floor plans are given as a guide only. Full completed measurements and details should be verified by any intending purchasers legal representative.

NOTICE: Stephenson Browne for themselves and for the vendors or lessors of this property whose agents they are give notice that: (1) the particulars are set out as a general guideline only for the guidance of intending purchasers or lessees, and do not constitute, nor constitute part of, an offer or contract; (2) all descriptions, dimensions, references to condition and necessary permissions for use and occupation, and other details are given in good faith and are believed to be correct but any intending purchasers or tenants should not rely on them as statements or representations of fact but must satisfy themselves by inspection or otherwise as to the correctness of each theme; (3) no person in the employment of Stephenson Browne has any authority to make representation or warranty whatever in relation to this property. (4) fixtures & fittings are subject to a formal list supplied by the vendors solicitors.