



59 Bandley Rise, Stevenage

Stevenage

CHANDLERS

In Excess of £325,000

59 Bandley Rise

Stevenage

Council Tax band: C

Tenure: Freehold

EPC Energy Efficiency Rating: C

EPC Environmental Impact Rating: C

- Three bedroom terraced home
- Refurbished throughout
- Electrical rewire in 2025
- Spacious entrance hallway
- Large lounge/diner
- Re-fitted kitchen
- Conservatory
- Three good sized bedrooms
- Bathroom and separate wc
- Private rear garden and parking to the front on a first come first served basis





Approximate Gross Internal Area
Ground Floor = 49.9 sq m / 537 sq ft
First Floor = 40.6 sq m / 437 sq ft
Total = 90.5 sq m / 974 sq ft

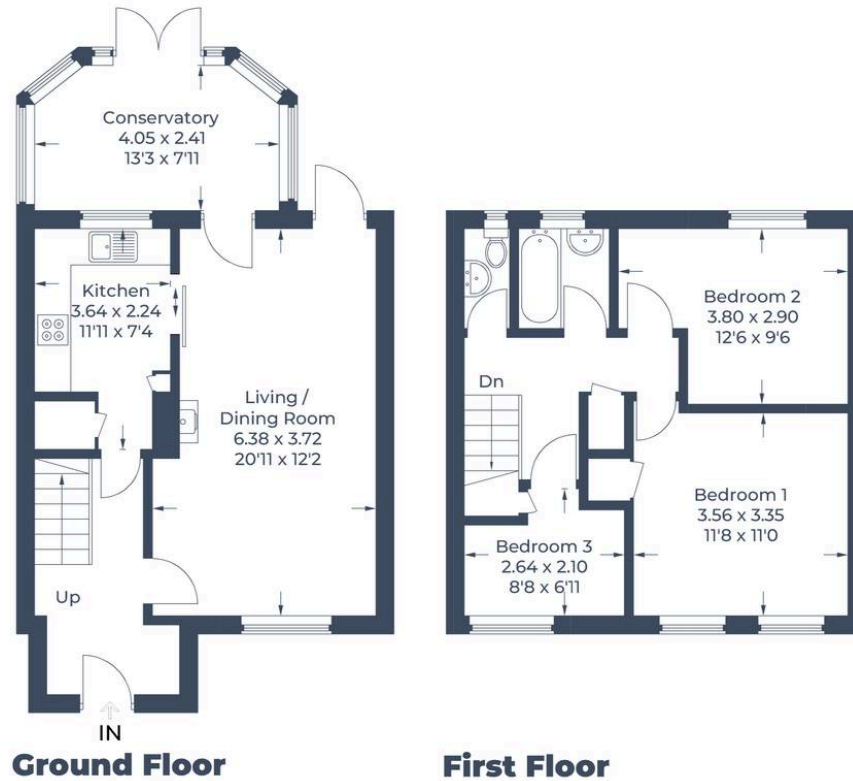


Illustration for identification purposes only,
measurements are approximate, not to scale.
© CJ Property Marketing Produced for Chandlers

Chandlers Estate Agents

Chandlers, 18 Market Place – SGI 1DB

01438356635

sales@chandlers-estates.co.uk

www.chandlers-estates.co.uk/

While we believe the details provided to be correct, we do not guarantee their accuracy. Prospective buyers should verify all information independently before making any decisions. No responsibility is taken for any errors, omissions, or misstatements.