



Guide Price
£300,000

Leasehold

1x  1x  1x 

**Verdun Heights, Foxley
Lane, Purley, Surrey,
CR8**

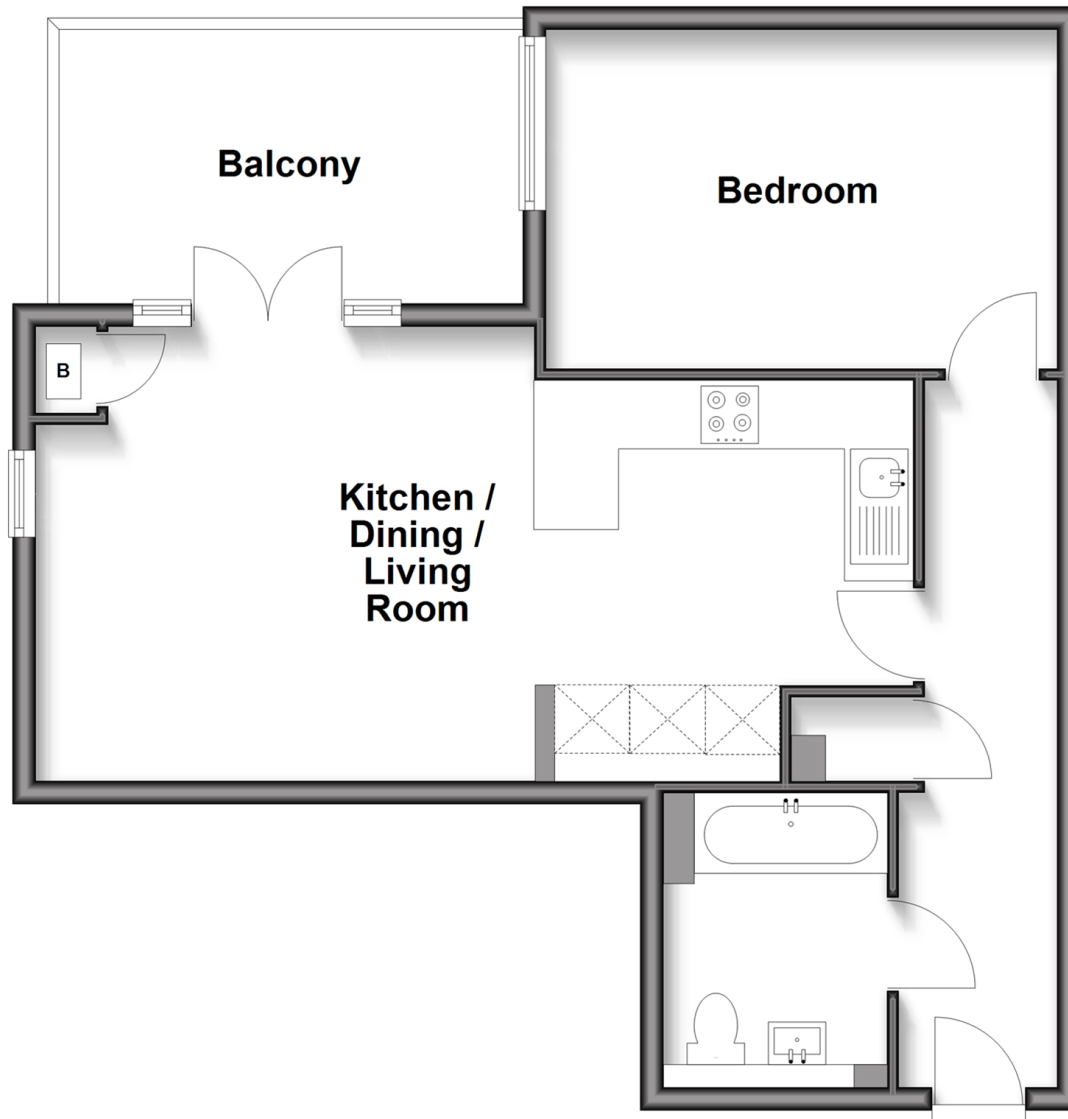
OVER 60?

Secure this property
for up to **59% less!**

cubitt & west
Helping you move forwards

Second Floor

Approx. 55.8 sq. metres (600.4 sq. feet)



Accommodation

SECOND FLOOR

Entrance Hall

Kitchen/Dining/Living Room: 24'11 x 12'10
(7.60m x 3.91m)

Balcony

Bedroom: 14'6 x 9'8 (4.42m x 2.95m)

Bathroom: 8'1 x 6'3 (2.47m x 1.91m)

OUTSIDE

Allocated Parking Space

Communal Gardens



Main features

- Chain free luxury second floor apartment with premium fixtures & fittings
- Large balcony overlooking communal gardens
- Lift & private gated parking
- Presented in immaculate condition
- Under-floor heating
- Walking distance to Purley station, shops, bars and restaurants

Nearest Schools

Primary Schools: Margaret Roper Catholic Primary 0.2 miles, Christ Church CofE Primary (Purley) 0.5 miles, Amy Johnson Primary 0.9 miles
Secondary Schools: Thomas More Catholic School 0.2 miles, Tudor Lodge School 0.4 miles, The John Fisher

Transport Information

Train Stations: Purley 0.3 miles, Reedham 0.7 miles, Riddlesdown 1.0 miles

Address

Verdun Heights, Foxley Lane, Purley, Surrey, CR8

Directions

For directions to this property please contact us.



cubitt&west
Helping you move forwards

Call Purley Branch 020 8660 8882 ■ [cubittandwest.co.uk](https://www.cubittandwest.co.uk)



- Legal advice should be taken to verify fixtures/fittings, planning, alterations and/or lease details
- Appliances & services are untested, dimensions are approximate and floor plans are not to scale
- Through a Homewise Home For Life Plan people aged 60+ can secure this property for up to 59% less, by purchasing a Lifetime Lease



21511618/20260124/D1/KV