



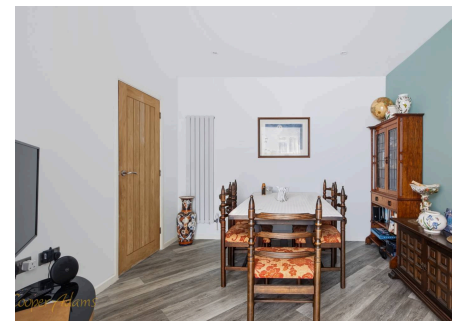
Hillview Crescent, East Preston

Freehold

No ongoing chain. • Three-bedroom semi-detached bungalow. • Open-plan kitchen/living room with island and breakfast bar. • Modern bathroom with walk-in shower, plus utility room and separate WC. • South-facing rear garden, detached garage and generous driveway parking. • Conveniently located close to East Preston village, local amenities and transport links.

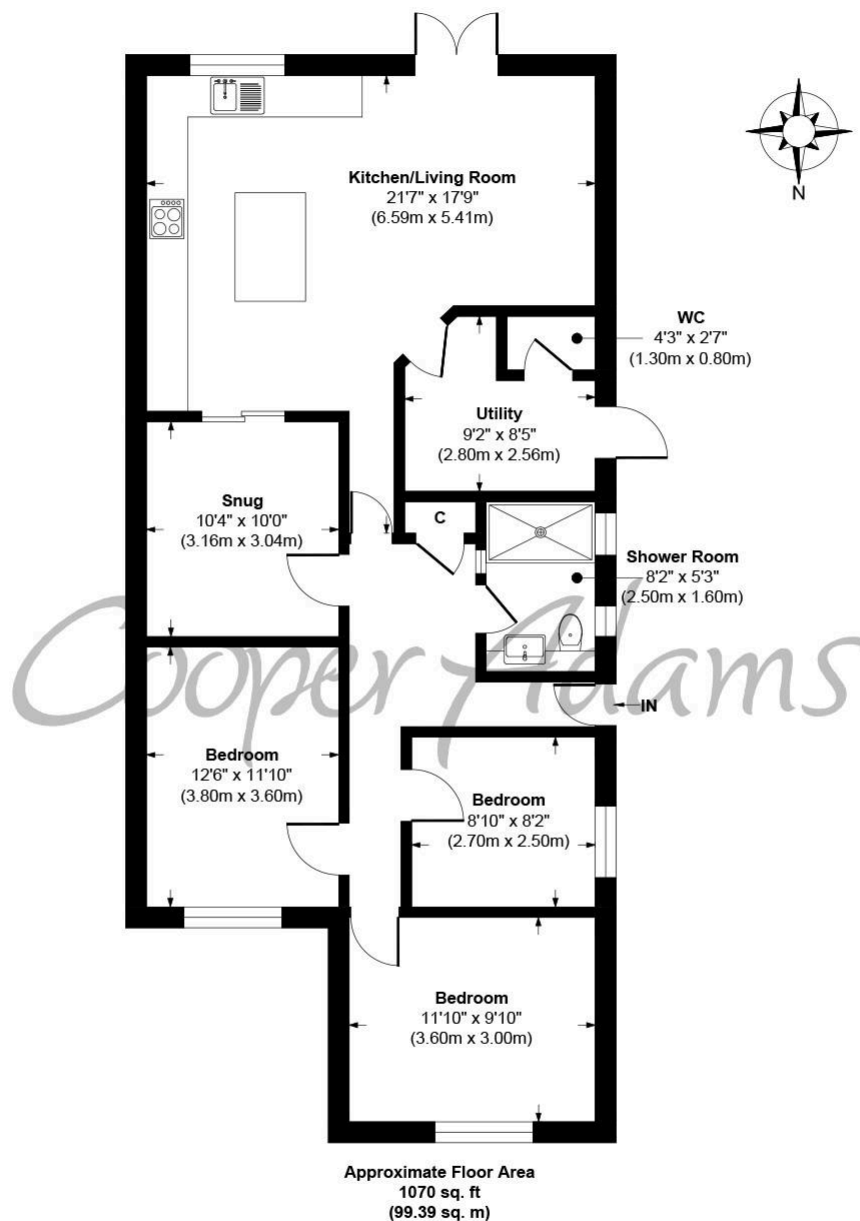
Cooper Adams

Offered for sale with no ongoing chain, this three-bedroom semi-detached bungalow is presented in modern condition and offers well-balanced accommodation, a south-facing garden, detached garage and generous driveway parking. The layout places the bedrooms at the front of the property, with the main living space overlooking the rear garden. The open-plan kitchen, dining and living area centres around a large island with a breakfast bar, creating a practical space for cooking, dining and everyday living, with doors opening directly onto the south-facing garden. A separate reception room with pocket doors provides flexibility for a variety of uses, while the utility room and separate WC add further convenience. The three bedrooms are served by a modern bathroom fitted with a contemporary suite, including a walk-in shower. Outside, the south-facing rear garden has been designed for ease of maintenance and provides access to the detached garage. A paved driveway extends along the side of the property, offering ample off-road parking. Conveniently positioned within easy reach of East Preston village, local amenities, schools and transport links.



East Preston, a charming seaside village in West Sussex, offers a strong sense of community with shops, restaurants, schools, and leisure clubs nearby. Its peaceful pebble shoreline is perfect for relaxing walks. Ideally located near the South Downs, it combines the best of country and seaside living.





Hillview Crescent, East Preston, West Sussex, BN16 1RG
Approx. Gross Internal Floor Area 1070 sq. ft / 99.39 sq. m

Illustration for identification purposes only, measurements are approximate, not to scale.

Copyright © Cooper Adams



Material Information includes important facts that may affect a buyer's decision to view or buy, such as tenure, restrictions, utilities, construction, and other key details. Full information for this property is available at www.cooper-adams.com. We may offer buyer services and receive referral benefits - details on request. All content is copyright Cooper Adams. Details and floor plans are for guidance only and don't form part of any contract. Measurements are maximums including bays and alcoves. Floor plan sizes are approximate. Images, maps and plans are not to scale. Appliances/services not tested. Cooper Adams Estates Ltd, Bishopstone, Reg No: 07127482. VAT No: 982847172.

Lettings | Sales | Free valuations | Land & New Homes | Mortgages

FULL DETAILS OF THE MATERIAL INFORMATION ARE ON OUR WEBSITE - VIEWING STRICTLY BY APPOINTMENT WITH COOPER ADAMS

FOR MORE PHOTOS AND TO BOOK A VIEWING VISIT OUR WEBSITE - Tel: 01903 791 792 - www.cooper-adams.com