



Corfield Street, London, , E2 0DP
£1,850 PCM

Elms Estates are pleased to offer to the market To Let this One Bedroom Apartment located on the second floor Floor in the heart of Bethnal Green.

The property is situated just off Bethnal Green Road on a delightful street with numerous Green Spaces such as Weaver's Fields, Bethnal Green Gardens, Museum Gardens, St Bartholmew Gardens within easy reach. It has Excellent Transport Links such as Bethnal Green Underground & Overground Stations close by. It is a short walk to the famous Brick Lane & Shoreditch High Street and close to many superb Local Amenities and an abundance of Shops, Restaurants and Cafes.

Internally the property offers a good sized reception, Separate fitted kitchen, Double bedroom and a spacious bathroom. The property is available from 18 July 2026 Onwards.

For more information or to arrange a viewing please do not hesitate to call in and speak with one of our Property Consultants.



Reception Room

15'5" x 12'1" (4.7 x 3.7)

Kitchen

10'5" x 8'6" (3.2 x 2.6)

Bedroom

10'5" x 7'10" (3.2 x 2.4)

Bathroom

Material Information

Deposit: £2,134.61

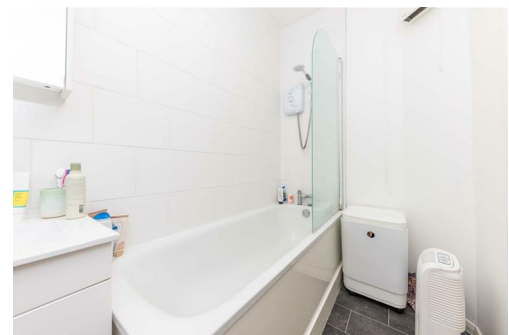
Council Tax Band: B

Marketing Disclaimer

These particulars are intended to give a fair description of the property, but their accuracy cannot be guaranteed and they do not constitute an offer or contract. Any intending tenant must rely on their own inspection and enquiries. All measurements, areas and distances are approximate and are for guidance purposes only. Photographs and floor plans are for illustrative purposes only and some images may have been digitally enhanced for marketing purposes.

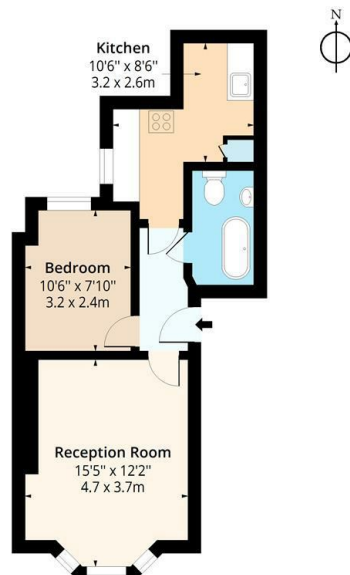
Where the property is managed by Elms Estates (if applicable), appliances, fixtures and fittings provided are checked and are intended to be in reasonable working order at the commencement of the tenancy. However, no guarantee is given as to their continued or uninterrupted operation and faults may occur during the tenancy. Any issues should be reported in accordance with the tenancy agreement to allow for inspection and repair.

Council Tax bands, EPC ratings and permitted payments under the Tenant Fees Act 2019 are provided in good faith and are subject to verification. No person in the employment of Elms Estates has authority to make or give any representation or warranty in relation to this property.



Corfield Street E2

Approx. Gross Internal Area 440 Sq Ft - 40.88 Sq M



Second Floor

Floor Area 440 Sq Ft - 40.88 Sq M

Floor plan is for illustrative purposes only and is not to scale. Every attempt has been made to ensure the accuracy of the floor plan shown, however all measurements, fixtures, fittings and data shown are an approximate interpretation for illustrative purposes only. lpaplus.com

Energy Efficiency Rating		Environmental Impact (CO ₂) Rating	
Current	Potential	Current	Potential
<p>Very energy efficient - lower running costs</p> <p>(92 plus) A</p> <p>(81-91) B</p> <p>(69-80) C</p> <p>(55-68) D</p> <p>(39-54) E</p> <p>(21-38) F</p> <p>(1-20) G</p> <p>Not energy efficient - higher running costs</p>		<p>Very environmentally friendly - lower CO₂ emissions</p> <p>(92 plus) A</p> <p>(81-91) B</p> <p>(69-80) C</p> <p>(55-68) D</p> <p>(39-54) E</p> <p>(21-38) F</p> <p>(1-20) G</p> <p>Not environmentally friendly - higher CO₂ emissions</p>	
	87		
	73		
England & Wales		England & Wales	
EU Directive 2002/91/EC		EU Directive 2002/91/EC	