



## THE TERRACE, SW13

£525,000

One Bedroom Apartment  
Well Presented  
Prestigious Mansion Block  
Views of the River Thames  
Minutes from Barnes Bridge  
Barnes Village

@marshandparsons  
marshandparsons.co.uk

MARSH &  
PARSONS

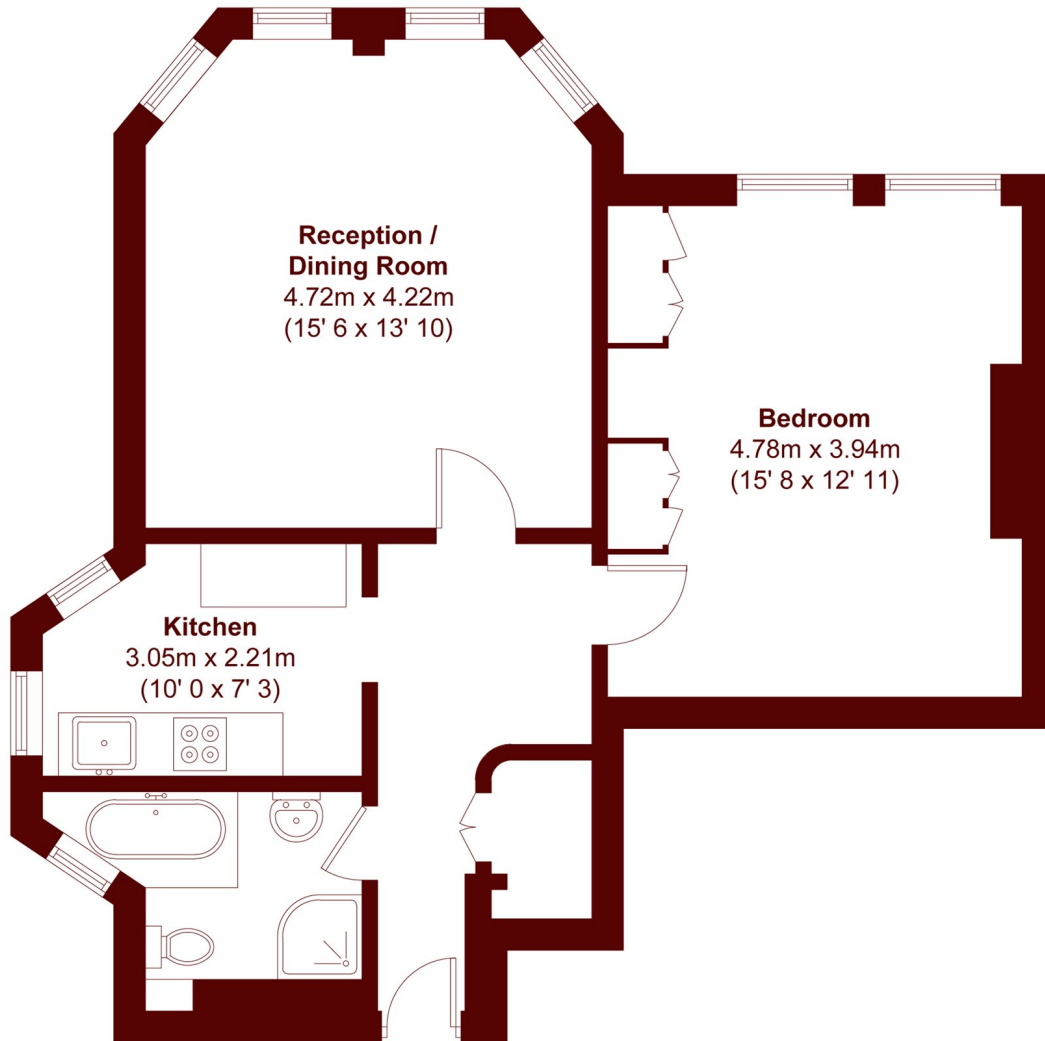


# ABOUT THE PROPERTY

Marsh & Parsons are delighted to bring to the market this spacious one-bedroom apartment located moments from the Thames in this prestigious red brick mansion block. The flat comprises an entrance hall, a well-appointed, modern kitchen with integrated appliances, a stylish bathroom with a separate shower, a large double bedroom with fitted wardrobes, and a charming bay-fronted reception room boasting stunning views towards the River Thames. Located on the fourth floor, the flat benefits from a dual aspect, bringing in huge amounts of natural light throughout the day. The flat has ample storage, a long lease (approx. 979 years), and a share of the freehold. The block is part of the Elm Bank Mansions Estate, which is very well maintained, and benefits from



# STEP INSIDE THE TERRACE



APPROX. GROSS INTERNAL FLOOR AREA  
60.7 SQM/653 SQFT

**Barnes & East Sheen**  
020 8563 8333

Energy Rating: E We aim to make our particulars both accurate and reliable. However, they are not guaranteed; nor do they form part of an offer or contract. If you require clarification on any points then please contact us, especially if you're traveling some distance to view. Please note that appliances and heating systems have not been tested and therefore no warranties can be given as to their good working order

**MARSH &  
PARSONS**