



Leigham Court Road, SW16

£2,550 Per calendar month

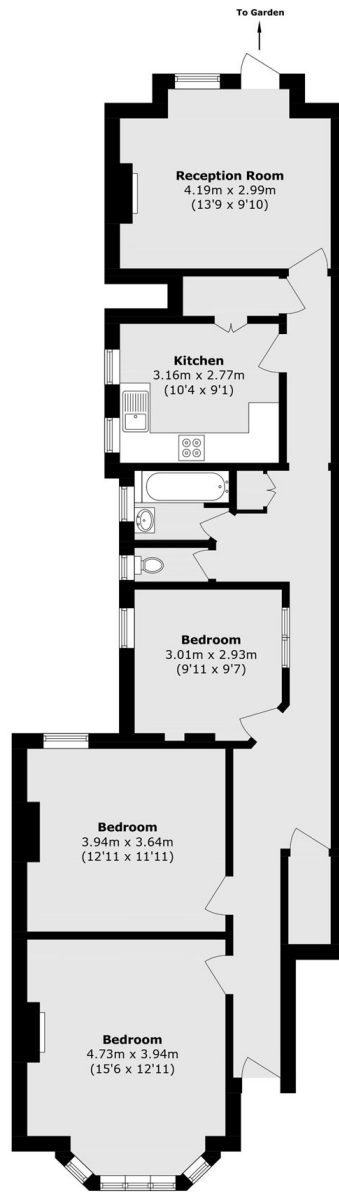
A spacious three double bedroom flat, located on the ground floor. This property has been finished to a good standard throughout offering a separate eat in kitchen, large living area and a communal garden. This flat is perfect for three professional sharers looking for good transport links.

Leigham Court Road is located close to Streatham High Road with its many independent shops and restaurants. Streatham Hill station is also a short walk away and offers fast links to London Victoria and Clapham Junction with frequent bus routes to Brixton town centre.

Features

- Three Double Bedrooms
- Shared Outdoor Space
- Separate Kitchen
- Large Living Area
- Separate Toilet
- Own Entrance

Leigham Court Road, London, SW16



Total area (approx.): 94.0 sq. m (1011.8 sq. ft)