



Guide Price
£450,000

Freehold

4x  2x  1x 

**Bluegown Avenue,
Leybourne, West
Malling, Kent, ME19**

OVER 60?

Secure this property
for up to **59% less!**

Wards
Helping you move forwards



Main features

- Well presented semi-detached house
- Useful downstairs cloakroom
- Sociable lounge/diner, privet for today's lifestyle
- Enjoy the luxury of having an en-suite shower room & family bathroom
- Excellent commuter links by road and rail within easy reach

Accommodation

GROUND FLOOR

Entrance Hall

Cloakroom

Kitchen: 14'6 x 9'5 (4.42m x 2.87m)

Lounge/Diner: 19'2 x 16'8 (5.85m x 5.08m)

Conservatory: 10'2 x 9'2 (3.10m x 2.80m)

FIRST FLOOR

Landing

Bedroom 2: 10'5 x 9'4 (3.18m x 2.85m)

Bedroom 3: 9'4 x 6'7 (2.85m x 2.01m)

Bathroom

Bedroom 1: 14'4 Into Bay x 9'5 (4.37m x 2.87m)

Bedroom 4: 9'3 x 6'7 (2.82m x 2.01m)

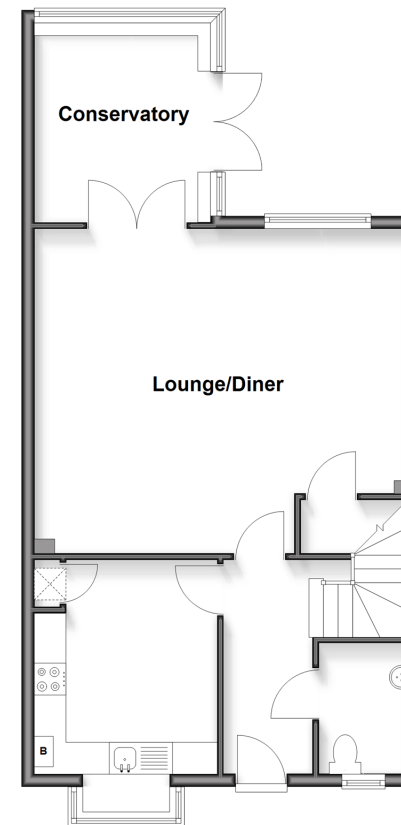
En-Suite Shower Room

OUTSIDE

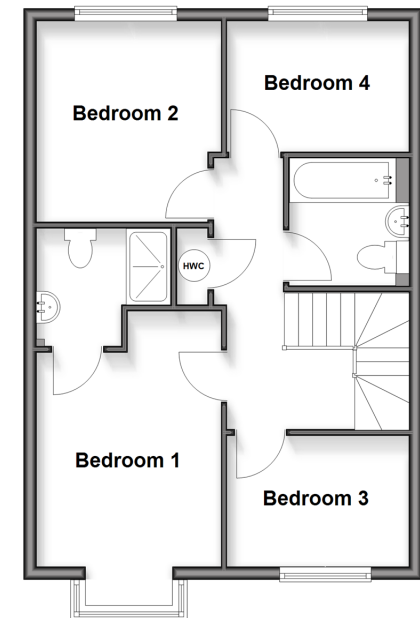
Rear Garden

Garage & Driveway

Ground Floor
Approx. 58.2 sq. metres (626.1 sq. feet)



First Floor
Approx. 51.2 sq. metres (551.1 sq. feet)



Call Kings Hill - 01732 222211 ■ wardsofkent.co.uk

- Legal advice should be taken to verify fixtures/fittings, planning, alterations and/or lease details
- Appliances & services are untested, dimensions are approximate and floor plans are not to scale
- Through a Homewise Home For Life Plan people aged 60+ can secure this property for up to 59% less, by purchasing a Lifetime Lease.



12405176/20250808/EN/JT