



ANDREW
EXELBY
ESTATE AGENTS

Gews Farm Barns, St Just TR19

£295,000

🛏 2 🚗 1 🛋 2



Two double bedrooms, off street parking and underfloor heating downstairs: Finished a little over ten years ago, this super two bedroom semi sits in a courtyard development just paces from St Just's Market Square - it's a peaceful spot with off street parking! The property benefits from underfloor heating downstairs and radiators upstairs - it is very economical to heat being of modern construction.



ANDREW
EXELBY
ESTATE AGENTS

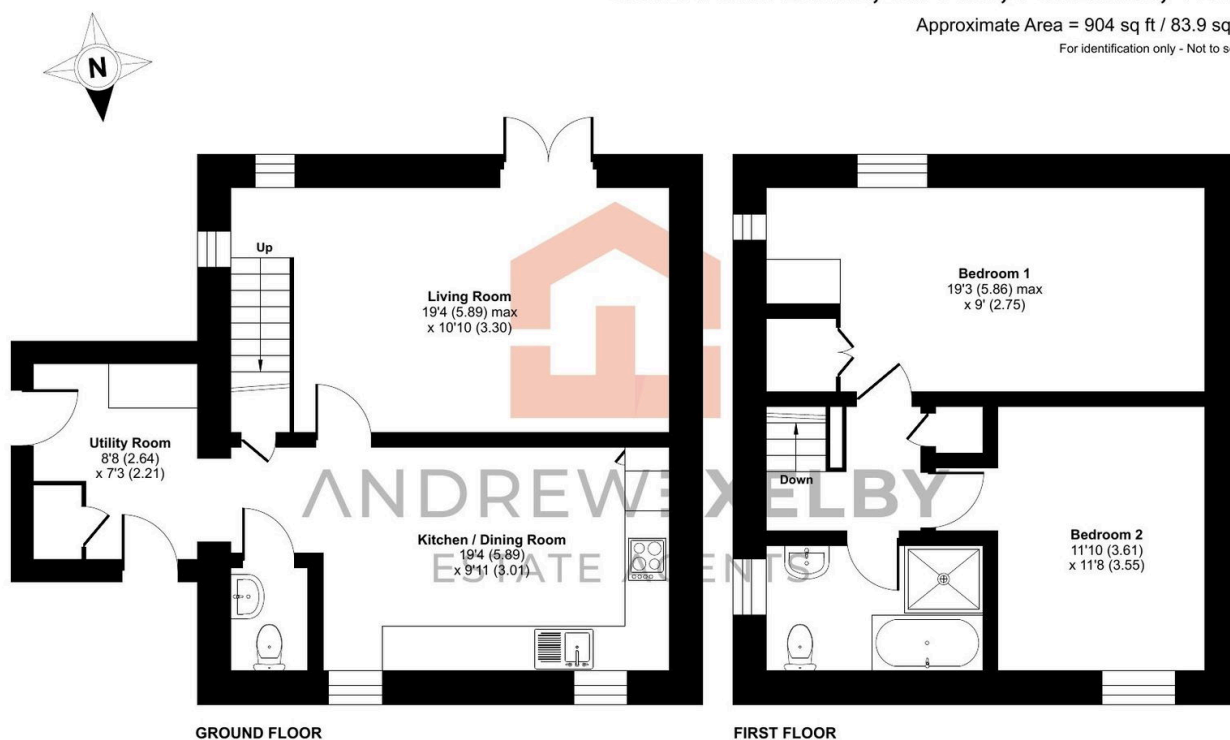
Key Features

- SEMI-DETACHED TWO DOUBLE BED HOME
- OFF STREET PARKING FOR TWO CARS
- ST JUST TOWN CENTRE LOCATION
- UNDERFLOOR HEATING DOWNSTAIRS
- ENCLOSED AND PRIVATE REAR GARDEN
- VERY SHORT WALK TO TOWN SQUARE
- QUIET AND TUCKED AWAY LOCATION
- PRESENTED IN EXCELLENT ORDER
- EPC - C
- COUNCIL TAX BAND - C

Gews Farm Barns, St. Just, Penzance, TR19

Approximate Area = 904 sq ft / 83.9 sq m

For identification only - Not to scale



Floor plan produced in accordance with RICS Property Measurement 2nd Edition, Incorporating International Property Measurement Standards (IPMS2 Residential). © nixhcom 2025. Produced for Andrew Exelby Estate Agents. REF: 1350860