



Niton Street, SW6

£3,000 Per week

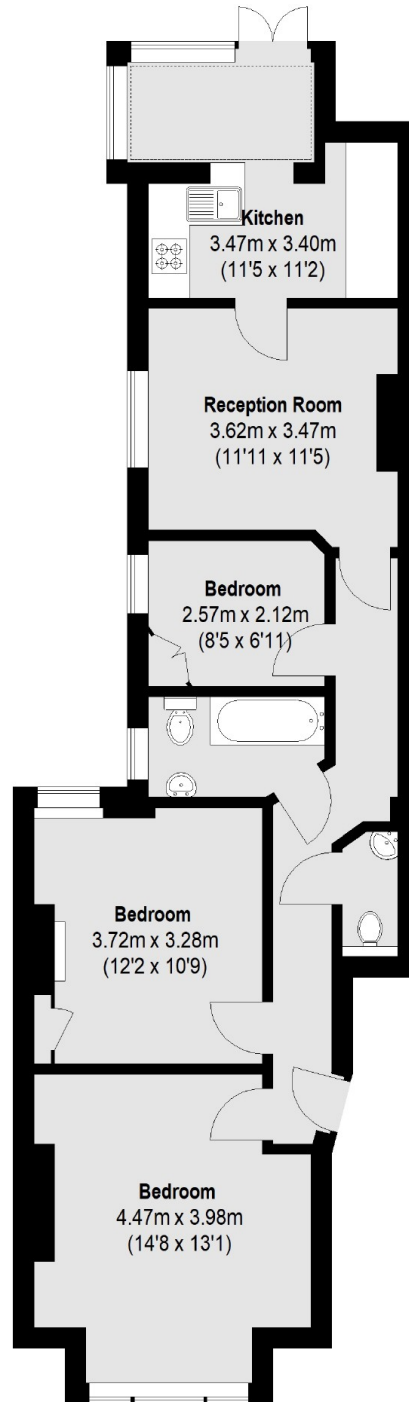
This three bedroom flat on the ground floor of the period building is situated in Fulham. The property offers a bright reception with access to the garden, a separate kitchen and well-proportioned double bedrooms.

Niton Street is located off Fulham Palace Road, with Bishops Park and the River Thames. Hammersmith and Putney Bridge stations are close by, including excellent local amenities, restaurants and cafés.

Features

- Three Bedrooms
- Family Bathroom
- Private Garden
- Separate Kitchen
- Tiled Bathroom
- Ground Floor Flat

Niton Street, London, SW6



Total area (approx.): 73.42 sq. m (790 Sq. ft)