



Central Street, EC1V

£475,000

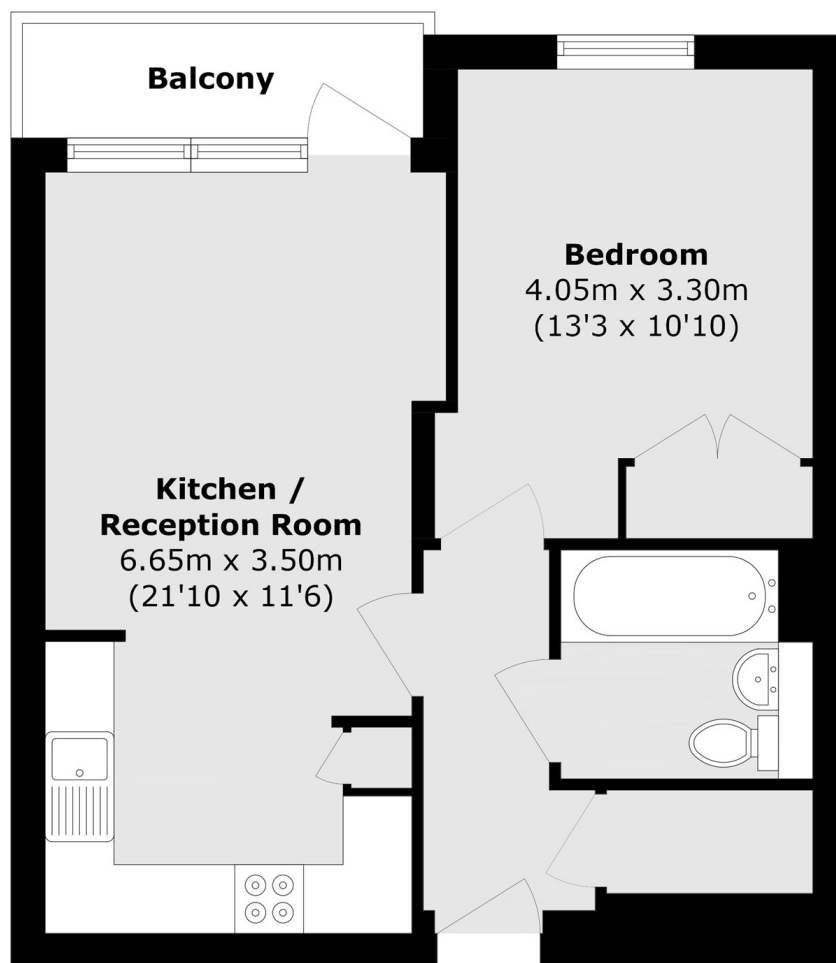
A well-presented, bright and modern one-bedroom apartment with an open-plan kitchen/livingroom with direct access to the private balcony. Residents benefit from access to communal gardens and a concierge.

Worcester Point is a highly sought-after and well-maintained development and is well located for transport links from Barbican, Angel, Old Street and Farringdon Stations.

Features

- Modern Development
- Private Balcony
- Communal Gardens
- Concierge
- Lift Access
- Central Location

Central Street,
London, EC1V



Total area (approx.): 47.3 sq. m (509.1 sq. ft)
Balcony area (approx.): 3.5 sq. m (37.6 sq. ft)