



# WOODS MEWS

---

MAYFAIR, W1J

A newly renovated and immaculately presented four bedroom mews house on this quiet residential street in the heart of Mayfair, featuring three private terraces and a double garage.

FOUR BEDROOMS | THREE BATHROOMS  
AIR CONDITIONING | DOUBLE GARAGE  
THREE TERRACES | WOODEN FLOORING



# ABOUT THE PROPERTY

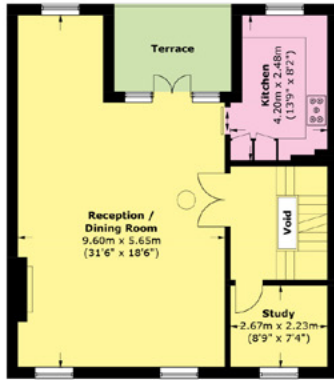
Entering the property from the ground floor you are greeted with an entrance hallway with access to an integral garage, single bedroom and guest WC. Stairs lead to the basement with a utility room, vault storage and a principal bedroom with access to a private terrace also benefiting from a dressing room and en suite bathroom.

On the first floor is a single bedroom/study, reception room with dining area, access to a private terrace and separate kitchen with integrated appliances.

The top floor houses two further double bedrooms with ample storage and two bathrooms. This property has been newly renovated and furnished throughout.

Woods Mews is situated between Park Lane and Park Street, close to the open spaces of Hyde Park.

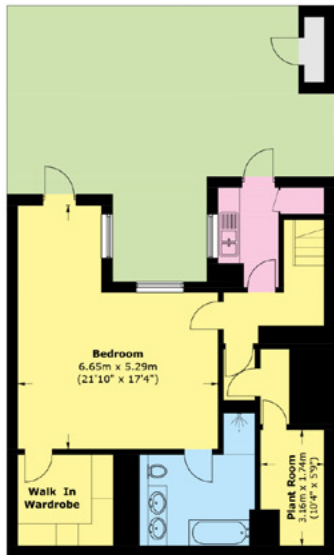




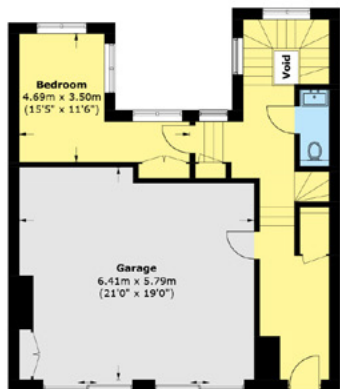
First Floor



Second Floor



Lower Ground Floor



Ground Floor



**WETHERELL**  
MAYFAIR'S FINEST PROPERTIES

102 Mount Street, London, W1K 2TH  
020 7529 5566 • wetherell.co.uk

TOTAL AREA (APPROX.) 2,967.6 SQ. FT (275.7 SQ. M)  
UTILITY CUPBOARD 10.7 SQ. FT (1.0 SQ. M)(EXCLUDING VOID)  
TERRACE 186.2 SQ. FT (17.3 SQ. M)

Wetherell have no authority to make or give any representations or warranties in relation to the property. These particulars do not form part of any offer or contract and must not be relied upon as statements or representations of fact. Any areas, measurements or distances are approximate. The text, photographs and plans are for guidance only and are not necessarily comprehensive. It should not be assumed that the property has all the necessary planning, building regulation or other consents and Wetherell have not tested any services, equipment or facilities. Purchasers must satisfy themselves by inspection or otherwise.  
EPC: C. May 2026.