



Watling Street

Hockliffe, Leighton Buzzard, LU7 9NP

£1,350 PCM




WATSONS
LETTING SINCE 1961

Watling Street

Hockliffe, Leighton Buzzard, LU7 9NP

Watsons are delighted to offer to let this newly refurbished two bedroom terrace house in the heart of Hockliffe Village, providing immediate access to the A5, and easy access to the M1 Motorway. The property benefits from being newly decorated, new High Heat Retention electric heaters, and new flooring fitted throughout. The accommodation comprises: Entrance porch, lounge, kitchen with new appliances, stairs to first floor, two bedrooms, newly fitted bathroom suite with shower over the bath, low maintenance rear garden, large single garage in a block, plus parking space. The property is offered Unfurnished, and is available immediately.



Entrance Porch

Lounge

15'3 x 11'11 (4.65m x 3.63m)

Kitchen

15'3 x 11'11 (4.65m x 3.63m)

Stairs to First Floor

Bedroom One

11'11 x 8'2 (3.63m x 2.49m)

Bedroom Two

11'5 x 6'9 (3.48m x 2.06m)

Bathroom

Front and Rear Gardens

Garage

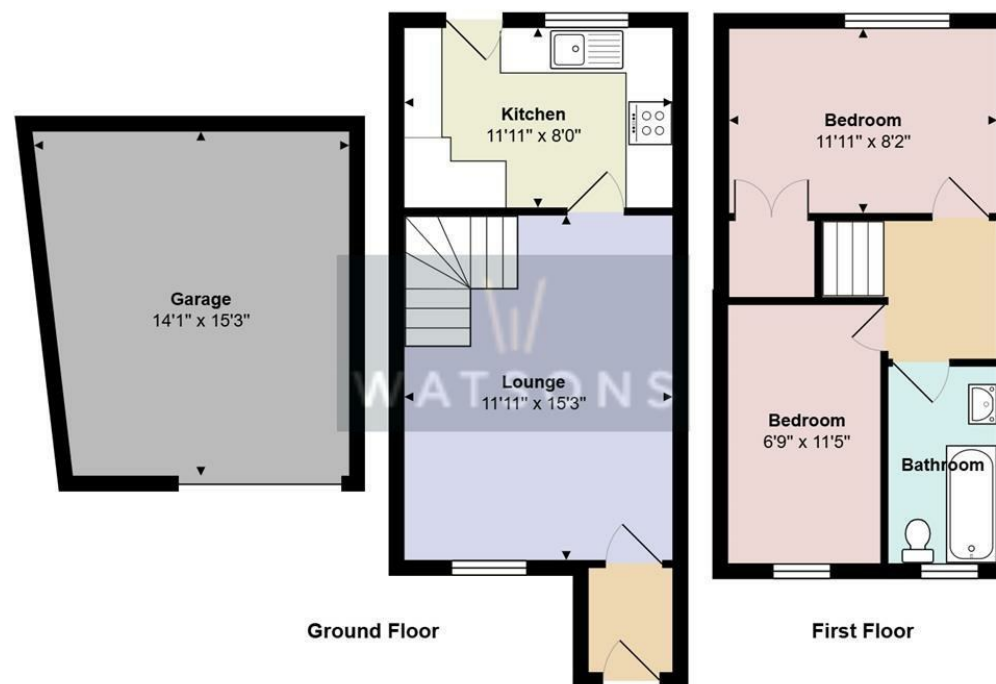
15' 3 x 14'1 (max) (4.57m 0.91m x 4.29m (max))





Measurements and floor plans are approximate and for guidance only. Any prospective Tenant should check all measurements. Floor plan coverings and fitments are for example only and may not represent the true finish of the property.

Floor Plan



Ground Floor

First Floor

Total Area: 783 ft²

All measurements are approximate and for display purposes only

Viewing

Please contact our Watsons Lettings Office on 01525 378309 if you wish to arrange a viewing appointment for this property or require further information.

17 - 21 Ropa Court, Leighton Buzzard, Bedfordshire, LU7 1DU
Tel: 01525 378309 Email: info@watsonslb.co.uk www.watsonslb.co.uk