



Wood End | | Evesham | WR11 1XL

Guide Price £295,000

COOPER & CO

Key features

- Three bedroom detached house
- Well presented throughout
- Garage and driveway
- Private & secured rear garden
- Sought after location
- ****VIEWING AVAILABLE 7 DAYS A WEEK****

Description

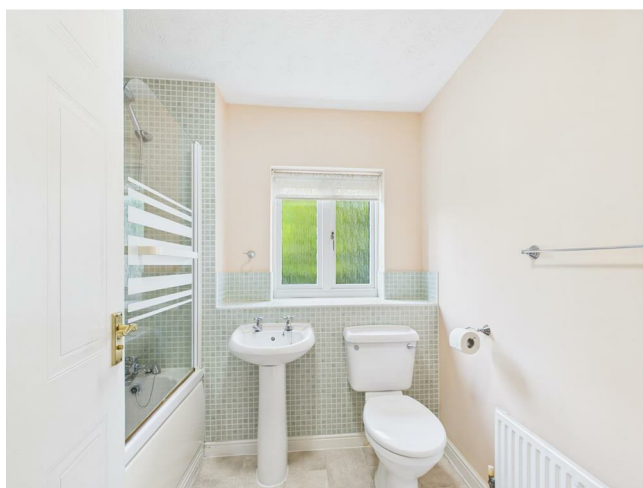
****DETACHED THREE DOUBLE BEDROOM
FAMILY HOME WITH GARAGE AND
DRIVEWAY IN SOUTH AFTER LOCATION****

Entrance hall; cloakroom; breakfast kitchen; living room with triple aspect and rear garden access.

On the first floor there are three bedrooms, the master with en-suite and there is a family bathroom. Private and secured rear garden.

Garage and driveway. Close proximity to Evesham town centre with amenities, Evesham train station and has excellent links to the motorway.

Directions



Entrance Hallway

Wood affect vinyl flooring underfoot, radiator and doors leading to Lounge, Kitchen/Diner, Downstairs WC and stairs to first floor.

Lounge

Carpet underfoot, feature fire and surround, dual aspect UPVC DG windows to front and side aspects with UPVC patio doors leading to enclosed rear garden.

Kitchen/ Diner

Mix of wall and base units surmounted by work surface and splash back tiles, integrated oven with hob and extractor over, kitchen sink with mixer taps drainer. Integrated dishwasher and space for white goods. Integrated pantry. Wood affect vinyl flooring underfoot, triple aspect, UPVC DG windows to front and side aspect with UPVC DG door leading to side/ rear garden.

Downstairs WC

Vinyl underfoot, low flush wc and stand alone wash hand basin.

Landing

Carpeted flooring, radiator and access to Bedrooms, 1,2,3 and Family Bathroom.







Bedroom 1

Carpet underfoot, UPVC DG window to front aspect, radiator, built in wardrobes x 2. Access to Ensuite.

Bedroom 2

Carpeted flooring, UPVC DG window to side aspect, radiator.

Bedroom 3

Carpeted flooring, radiator, UPVC DG window to front aspect.

Ensuite

Vinyl flooring, walk-in-shower, low flush WC, stand alone wash hand basin, radiator and UPVC DG window to rear aspect.

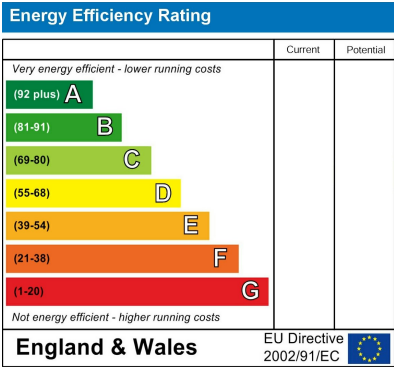
Bathroom

Vinyl flooring underfoot, part tiled walls, bath with shower-over, low flush wc, stand alone wash hand basin, radiator and UPVC DG window to front aspect.

Rear Garden

Well presented, secured and private rear garden with a mix of patio and lawned areas with well planted borders and access to garage and side access.

Floor plans



I Port Street
Evesham
Worcestershire
WR11 3LA
01386 574 000
sales@cooperandcoestateagents.co.uk