



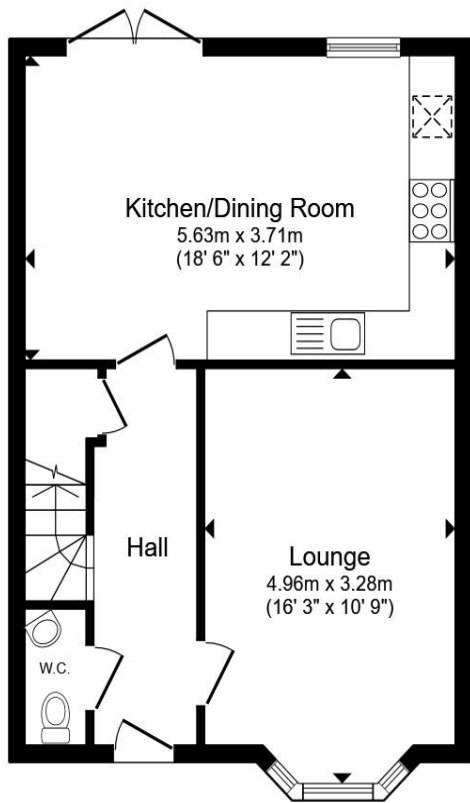
Sorrel Drive, Bridgwater TA5 2BX

welcome to

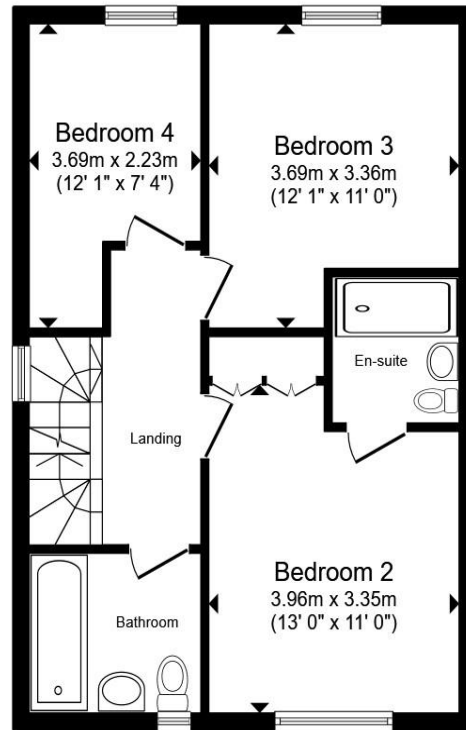
Sorrel Drive, Bridgwater

An immaculately presented, four double-bedroom property in the desirable Wilstock Village. This home is finished to a high standard throughout and offers a garage, driveway, an enclosed rear garden, and is located within close proximity to the M5 Motorway.

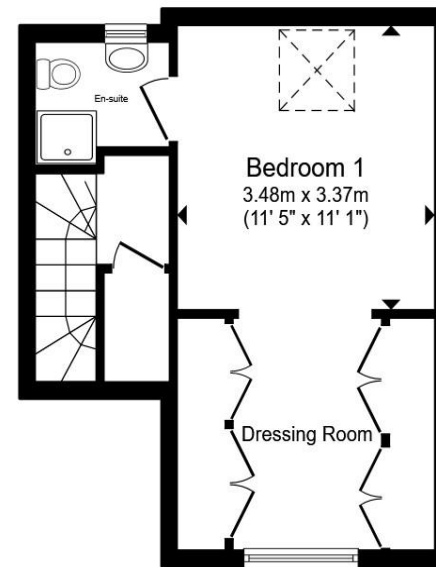




Ground Floor



First Floor



Second Floor

- Entrance Hall**
- Cloakroom**
- Lounge**
- Kitchen/Dining Room**
- First Floor Landing**
- Bedroom Two**
- En-Suite**
- Bedroom Three**
- Bedroom Four**
- Bathroom**
- Second Floor Landing**
- Bedroom One**
- En-Suite**
- Rear Garden**
- Garage**
- Parking**

Total floor area 124.5 m² (1,340 sq.ft.) approx

This floor plan is for illustrative purposes only. It is not drawn to scale. Any measurements, floor areas (including any total floor area), openings and orientation are approximate. No details are guaranteed, they cannot be relied upon for any purpose and they do not form part of any agreement. No liability is taken for any error, omission or misstatement. A party must rely upon its own inspection(s). Powered by www.propertybox.io



welcome to

Sorrel Drive, Bridgwater

- Four Double-Bedroom Detached Home
- Accommodation Arranged Over Three Floors
- Two En-Suites
- Enclosed Rear Garden
- Garage and Driveway Parking

Tenure: Freehold EPC Rating: C

Council Tax Band: E

£400,000



Please note the marker reflects the postcode not the actual property

view this property online fox-and-sons.co.uk/Property/TAU109208



Property Ref:
TAU109208 - 0003

1. MONEY LAUNDERING REGULATIONS Intending purchasers will be asked to produce identification documentation at a later stage and we would ask for your co-operation in order that there is no delay in agreeing the sale. 2. These particulars do not constitute part or all of an offer or contract. 3. The measurements indicated are supplied for guidance only and as such must be considered incorrect. Potential buyers are advised to recheck measurements before committing to any expense. 4. We have not tested any apparatus, equipment, fixtures or services and it is in the buyers interest to check the working condition of any appliances. 5. Where an EPC, or a Home Report (Scotland only) is held for this property, it is available for inspection at the branch by appointment. If you require a printed version of a Home Report, you will need to pay a reasonable production charge reflecting printing and other costs. 6. We are not able to offer an opinion either written or verbal on the content of these reports and this must be obtained from your legal representative. 7. Whilst we take care in preparing these reports, a buyer should ensure that his/her legal representative confirms as soon as possible all matters relating to title including the extent and boundaries of the property and other important matters before exchange of contracts.


fox & sons



01823 286161



taunton@fox-and-sons.co.uk



52 East Street, TAUNTON, Somerset, TA1 3NA



fox-and-sons.co.uk