



# BASSETT ROAD

NOTTING HILL W10



## A BEAUTIFULLY REIMAGINED DOUBLE-FRONTED HOME

This elegant semi-detached five-bedroom house on Bassett Road has been transformed with exceptional sensitivity and style. Behind secure gates with parking for two cars, the house unfolds across 5,105 sq ft arranged over five wonderfully planned floors in which light, volume and exquisite detailing define every space.



Local Authority: Royal Borough of Kensington & Chelsea

Council Tax: Band H

Tenure: Freehold

Guide Price: £11,500,000







The tone is set the moment you step inside. A striking Crittall framed archway creates a sculptural link between the bespoke kitchen and the adjoining living and dining rooms, all of which enjoy stunning views across the 15-metre wide garden – rarely found in these homes.

The lower ground floor has been designed with family life in mind, offering a generous playroom or TV room opening directly onto the garden, alongside a private double bedroom with separate entrance, ideal for guests or staff.



**Lower Ground Floor**

- TV/Family room
- Bedroom suite with shower room
- Garden
- Utility room
- Cloakroom

**Raised Ground Floor**

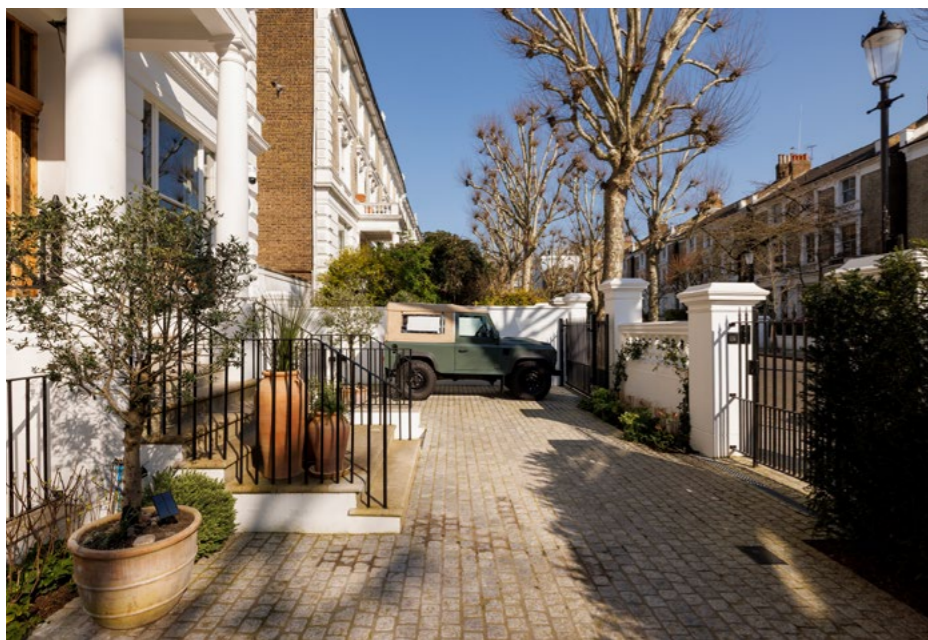
- Reception / dining room
- Kitchen
- Study nook
- Tack room / boiler
- Front garden with off-street parking

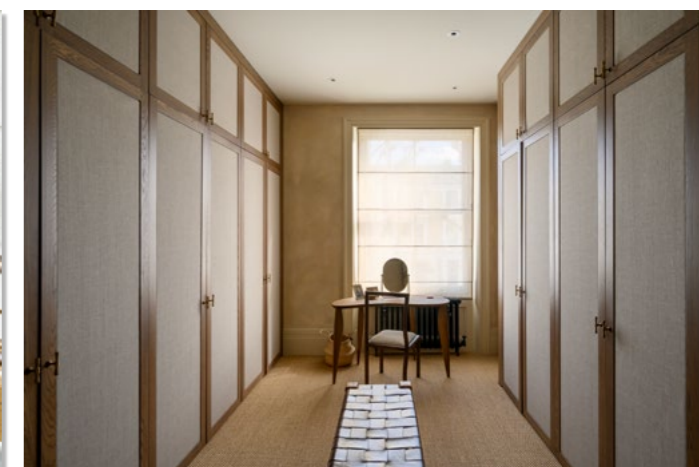
**First Floor**

- Principal bedroom suite with bathroom
- Dressing room
- Study
- Cloakroom

**Second Floor**

- Three bedrooms
- Bathroom
- Laundry
- Third floor storage
- Loft





The upper floors provide four further bedrooms, two bathrooms and a study, each thoughtfully arranged to maximise comfort and privacy. With its generous proportions, refined finishes and easy, lateral flow, this is a rare opportunity to acquire a superbly appointed family home on one of Notting Hill's most admired streets.

**Approximate Gross Internal Area**

4,006 sq ft / 372.2 sq m

**Loft Room**

914 sq ft / 84.9 sq m

**Track Room / Boiler**

160 sq ft / 14.9 sq m

**External Cupboard**

25 sq ft / 2.3 sq m

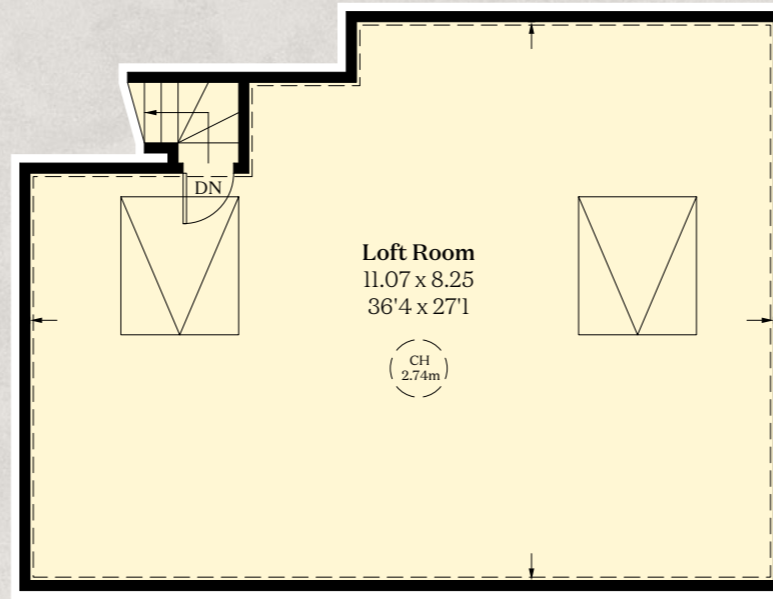
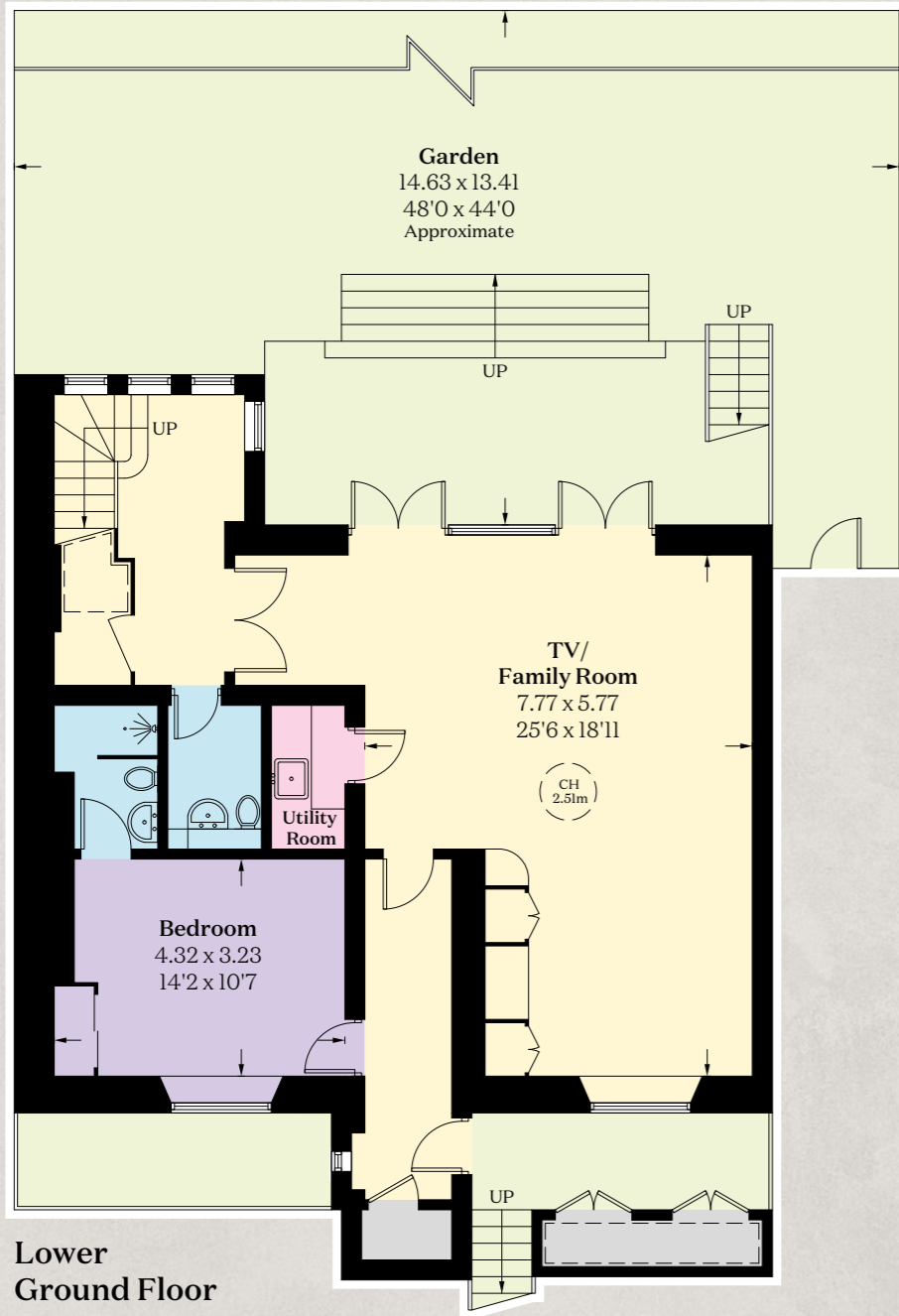
**Total**

5,105 sq ft / 474.3 sq m

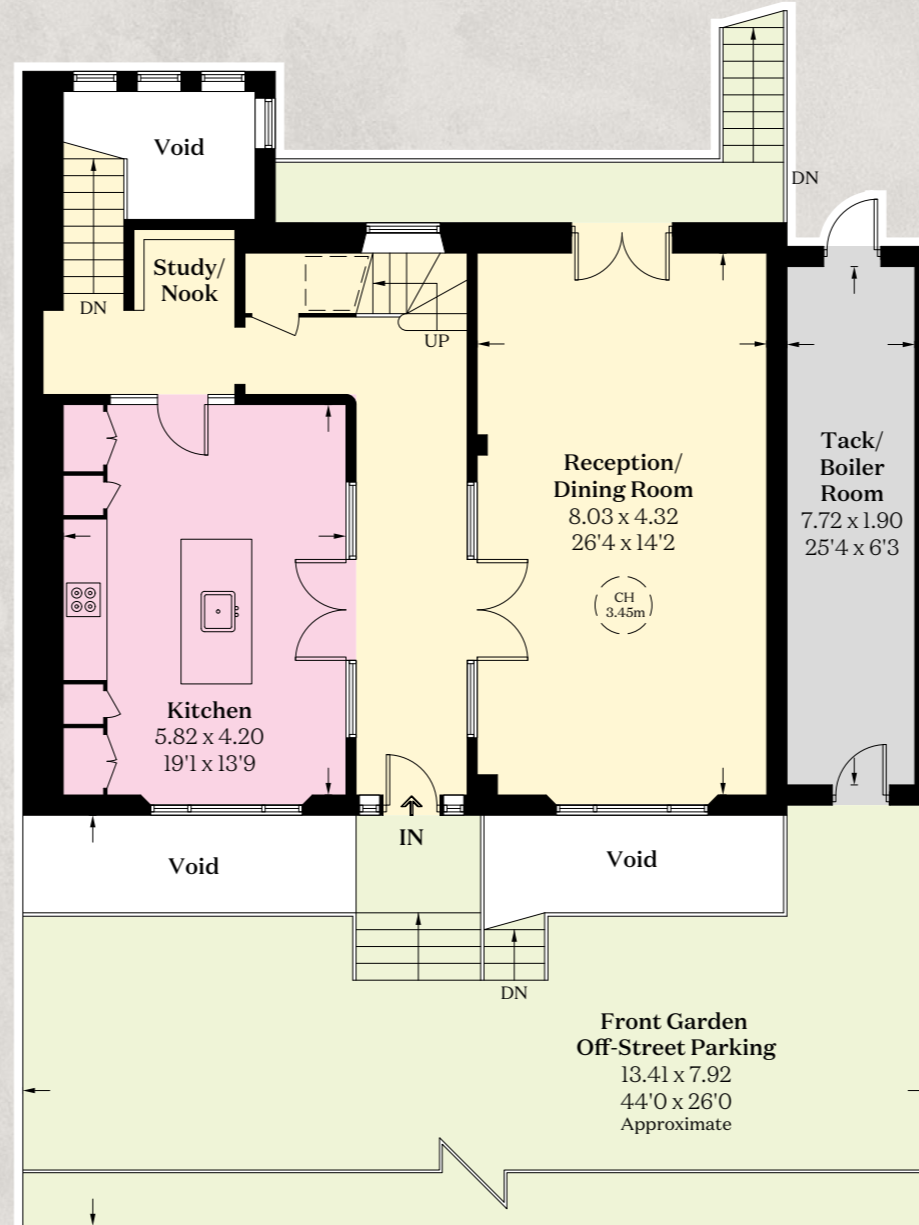
including limited use area/loft room

988 sq ft / 91.8 sq m

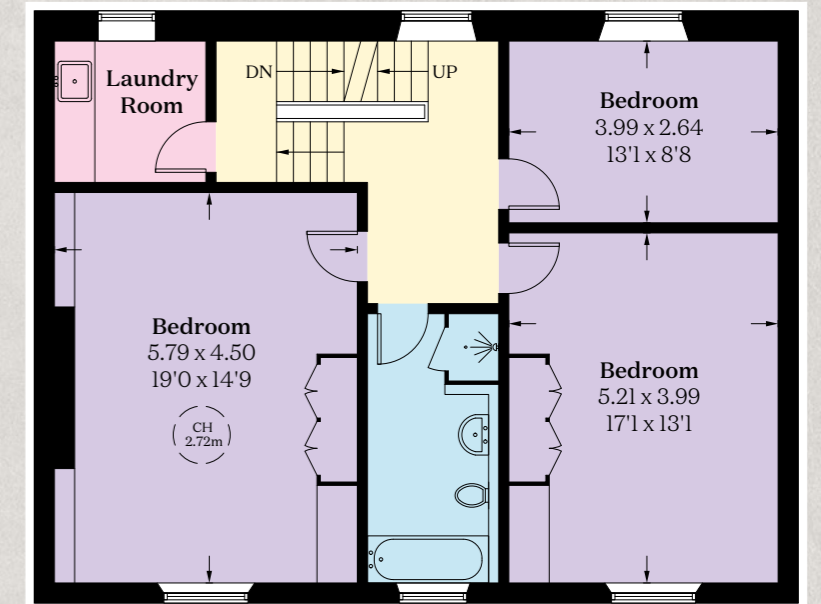
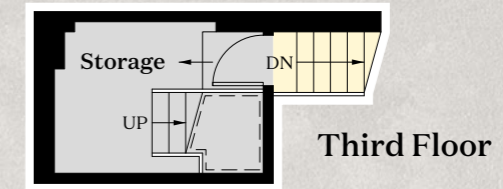
This plan is for guidance only and must not be relied upon as a statement of fact. Attention is drawn to the important notice on the last page of the text of the Particulars.



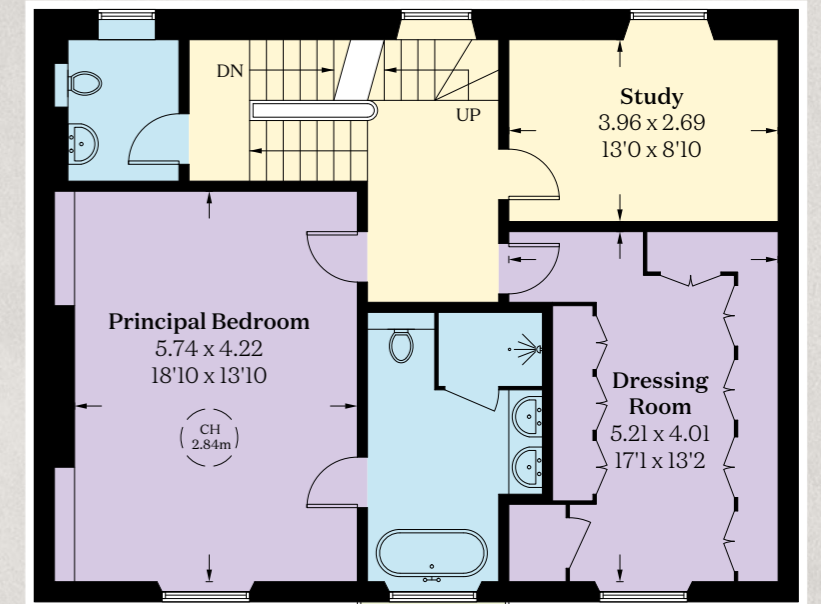
**Loft Room**



**Raised  
Ground  
Floor**



**Second Floor**



**First Floor**



This plan is for layout guidance only. Not drawn to scale unless stated. Windows and door openings are approximate. Whilst every care is taken in the preparation of this plan, please check all dimensions, shapes and compass bearings before making any decisions reliant upon them.

This floorplan has been supplied to The Brochure by Knight Frank

We would be delighted  
to tell you more.

**Arthur Lintell**

+44 20 7313 9112

arthur.lintell@knightfrank

**Knight Frank Notting Hill**

294 Westbourne Grove

London W11 2PS

[knightfrank.co.uk](https://www.knightfrank.co.uk)

Your partners in property

1. Particulars: These particulars are not an offer or contract, nor part of one. You should not rely on statements given by Knight Frank in the particulars, by word of mouth or in writing ("information") as being factually accurate about the property, its condition or its value. Neither Knight Frank nor any joint agent has any authority to make any representations about the property, and accordingly any information given is entirely without responsibility on the part of Knight Frank. 2. Material Information: Please note that the material information is provided to Knight Frank by third parties and is provided here as a guide only. While Knight Frank has taken steps to verify this information, we advise you to confirm the details of any such material information prior to any offer being submitted. If we are informed of changes to this information by the seller or another third party, we will use reasonable endeavours to update this as soon as practical. 3. Photos, Videos etc: The photographs, property videos and virtual viewings etc. show only certain parts of the property as they appeared at the time they were taken. Areas, measurements and distances given are approximate only. 4. Regulations etc: Any reference to alterations to, or use of, any part of the property does not mean that any necessary planning, building regulations or other consent has been obtained. A buyer must find out by inspection or in other ways that these matters have been properly dealt with and that all information is correct. 5. Fixtures and fittings: A list of the fitted carpets, curtains, light fittings and other items fixed to the property which are included in the sale (or may be available by separate negotiation) will be provided by the Seller's Solicitors. 6. VAT: The VAT position relating to the property may change without notice. 7. To find out how we process Personal Data, please refer to our Group Privacy Statement and other notices at <https://www.knightfrank.com/legals/privacy-statement>.

Particulars dated **March 2026**. Photographs and videos dated **March 2026**. All information is correct at the time of going to print. Knight Frank is the trading name of Knight Frank LLP. Knight Frank LLP is a limited liability partnership registered in England and Wales with registered number OC305934. Our registered office is at 55 Baker Street, London W1U 8AN. We use the term 'partner' to refer to a member of Knight Frank LLP, or an employee or consultant. A list of members names of Knight Frank LLP may be inspected at our registered office. If you do not want us to contact you further about our services then please contact us by either calling 020 3544 0692, email to [marketing.help@knightfrank.com](mailto:marketing.help@knightfrank.com) or post to our UK Residential Marketing Manager at our registered office (above) providing your name and address. 27/04/26 KF-251201-08-JF