



Alexandra Lodge, Monument Hill, KT13 8RY
riceandroman.co.uk

RICE & ROMAN

Alexandra Lodge, Weybridge

RICE & ROMAN

Features: Exclusively for those aged 60+ | 1 double bedroom | 1st Floor | Private balcony | Day Manager | Residents' Lounge | Guest-Suite | Close to Weybridge town centre

A larger than average 1 double bedroom apartment in the age specific development of Alexandra Lodge, Monument Hill. Previously the house manager apartment, it is ideally situated within the development being close to the lift and stairs and within easy reach of the residents' Lounge, Laundry and main entrance. In addition to being larger than most 1 beds in Alexandra Lodge, the apartment has a sunny aspect and with the added benefit of a full width balcony off the reception, this apartment is flooded with natural light both in the lounge and bedroom. For anyone looking at age specific developments with private outside space, you will know that it is quite rare, especially when considering the developments proximity to WeybridgeTown Centre.

Alexandra Lodge itself comprises 24 one bedroom apartments, is set over three floors and offers excellent access into Weybridge and the surrounding areas. With ample parking and good transport links, travel is not an issue at Alexandra Lodge, and with a residents' lounge, guest suite, laundry and day manager, the development offers excellent services as well as accommodation.

Key information

Local Authority: Elmbridge Borough Council

Internal Area: 371 sqft (34.47 sqm)

Tenure: Leasehold

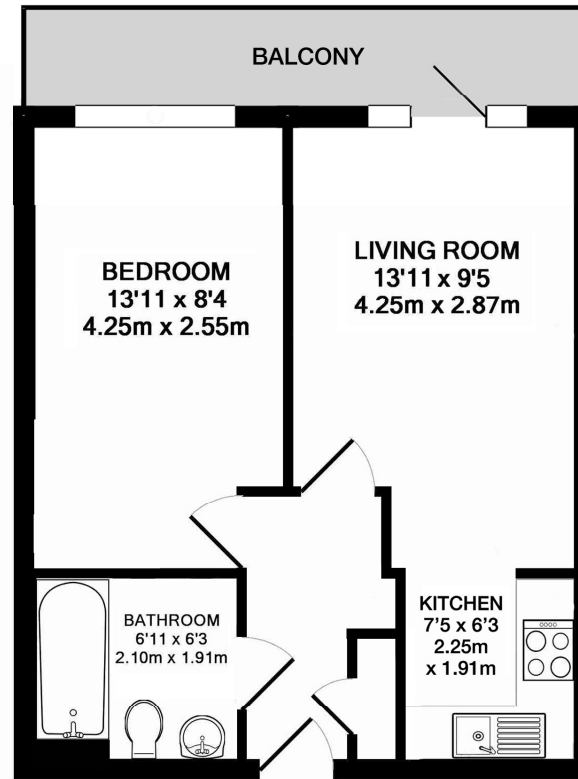
Ground Rent: £442.98 per annum

Service Charge: £2,706.34 per annum

Asking price: £119,950

For identification purposes only. Not to scale.

INTERNAL FLOOR AREA (APPROX.) 371 sq ft/ 34.4 sq m



FIRST FLOOR FLAT



IMPORTANT: we would like to inform prospective purchasers that these sales particulars have been prepared as a general guide only. A detailed survey has not been carried out, nor the services, appliances and fittings tested. Room sizes should not be relied upon for furnishing purposes and are approximate. If floor plans are included, they are for guidance only and illustration purposes only and may not be to scale. If there are any important matters likely to affect your decision to buy, please contact us before viewing the property.

Churcham House, 1 Bridgeman Road, Teddington, TW11 9AJ

Tel: 01372 700196 Fax: 0872 3255924 Email: info@riceandroman.co.uk

riceandroman.co.uk