



ECKSTEIN ROAD, SW11

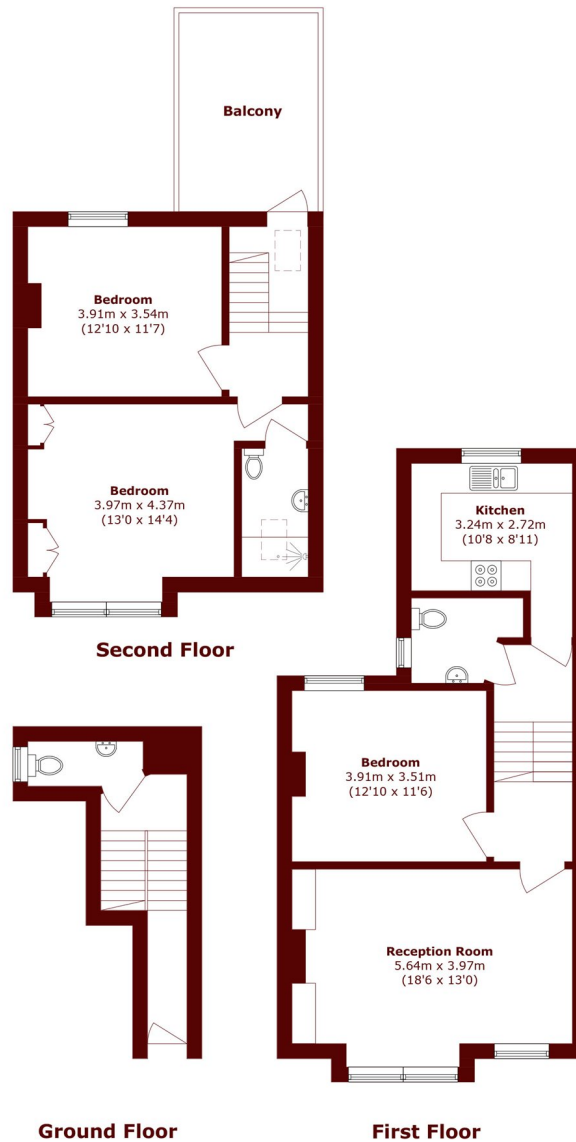
£850,000

An almost 1200 sq ft three double bedroom split level period conversion with a spacious roof terrace overlooking the local skyline, enviably located in the very heart of Clapham Junction.

Approx 1200 sq ft
19ft Reception Room
Three Double Bedrooms

Two Bathrooms & WC
Great Roof Terrace
Share Of Freehold

STEP INSIDE ECKSTEIN ROAD



Total area (approx.): 106.1 sq. m (1142.0 sq. ft)
Balcony area (approx.): 11.2 sq. m (120.5 sq. ft)

Battersea
020 7326 9920

Energy Rating: E We aim to make our particulars both accurate and reliable. However, they are not guaranteed; nor do they form part of an offer or contract. If you require clarification on any points then please contact us, especially if you're traveling some distance to view. Please note that appliances and heating systems have not been tested and therefore no warranties can be given as to their good working order

**MARSH &
PARSONS**