



KILDARE TERRACE, W2

£3,000 per week (£13,000 per month)

A beautiful five-bedroom family house set on a prime residential street in the heart of Notting Hill, featuring a substantial private lawned garden and access to communal gardens.

Five bedroom
House
Expansive

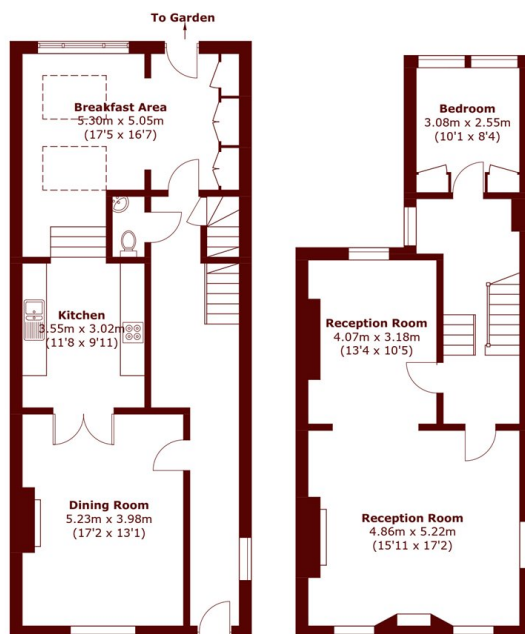
Excellent condition
Large garden
Communal garden

STEP INSIDE KILDARE TERRACE



Third Floor

Second Floor



Ground Floor

First Floor

Total area (approx.): 241.0 sq. m (2,894.0 sq. ft)

Notting Hill
020 7313 6910

Energy Rating: C We aim to make our particulars both accurate and reliable. However, they are not guaranteed; nor do they form part of an offer or contract. If you require clarification on any points then please contact us, especially if you're traveling some distance to view. Please note that appliances and heating systems have not been tested and therefore no warranties can be given as to their good working order

**MARSH &
PARSONS**