

# Kensington Park Road, W11



A large 3-bedroom apartment in London's most desirable locations, the famous Notting Hill Gate. Within easy reach to all the amenities of Notting Hill and its fashionable shops. Right in the heart of Notting Hill, on Kensington Park Road.  
Leasehold, 999 years from 25 Mar 1969

1161.00 sq ft | 1 RECEPTION ROOM | 3 BEDROOMS | EN SUITE SHOWER ROOM | 3 BATHROOMS | KITCHEN



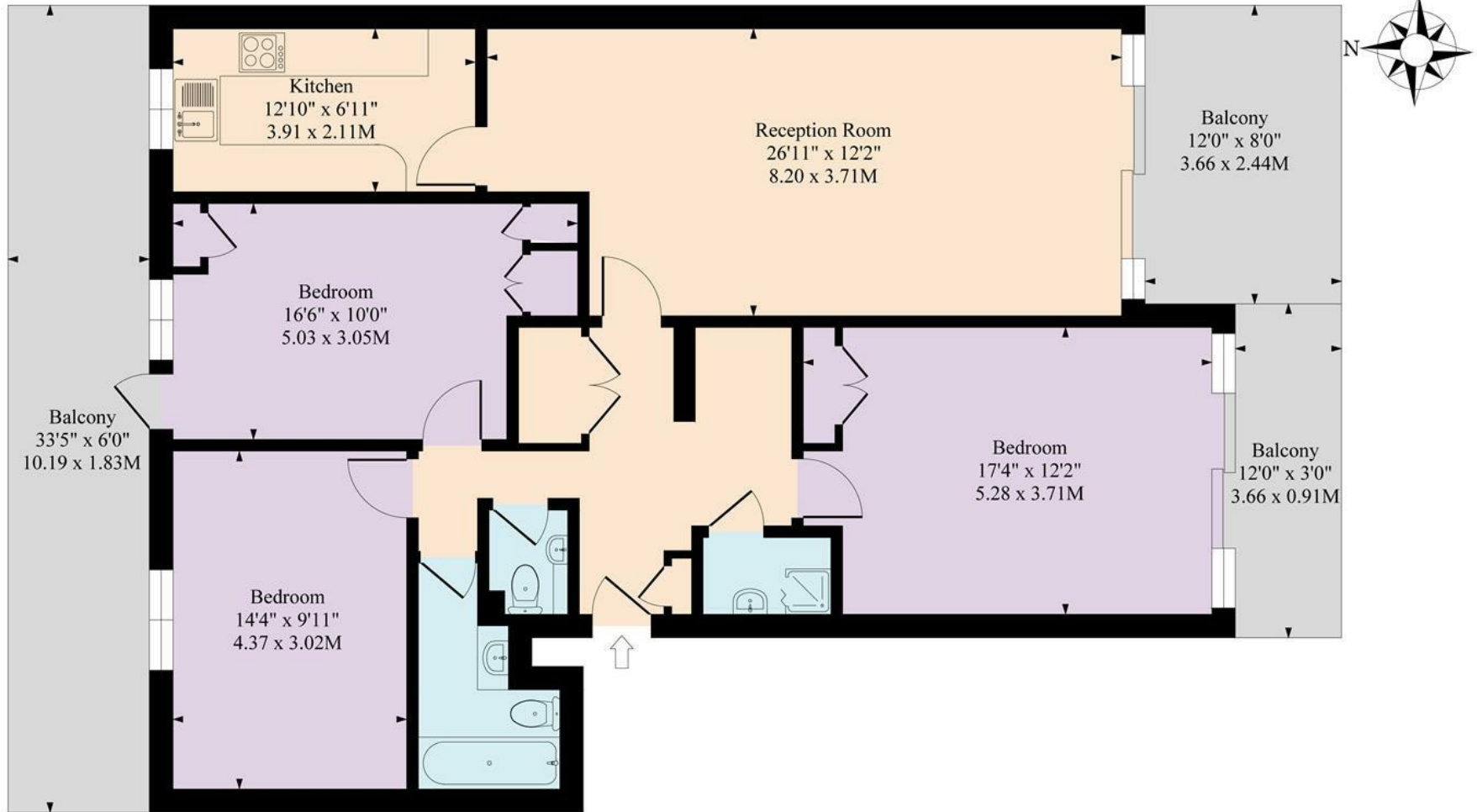
**Guide Price £1,750,000**

020 7937 9070  
[www.croft-international.com](http://www.croft-international.com)

**Leasehold**



Waterford House, Kensington Park Road W11



Ground Floor

Approximate Gross Internal Area 1161 Sq Ft - 107.86 Sq M

Measured in according with RICS guidelines. Every attempt is made to ensure accuracy  
However all measurements are approximate.  
The floor plan is illustrative purposes only and is not to scale

