



Connells

Marsh Lane
WEST BROMWICH



Property Description

This semi-detached offers the perfect opportunity for your next family home. Set in a sought after location, this one will not be available for long. The property benefits from being within walking distance to major bus links and easy access to the Newton Road to Great Barr. The new square shopping centre offers an array of shops and amenities along with being close to the Sandwell & General Hospital as well as being within the catchment for Pennyhill Primary School.

The property has been well maintained over the years. As you approach the property you have the space for one car, steps up to the front entrance to the hallway. The front offers a living room with the rear being an kitchen diner, downstairs bathroom room. The first floor offers three generously sized bedrooms and access to the loft. The garden has recently been landscaped with sleepers and a patio area.

The property is ready to move into with no work required!

CALL NOW TO ARRANGE YOUR VIEWINGS!

Entrance Hall

Entrance into the property via a double glazed door to the front, stairs rising to the first floor and door leading to the lounge.

Lounge

Featuring a double glazed window to the front, fire set in a feature surround, central heated radiator and door leading through to the kitchen.

Kitchen

Fitted kitchen offering a range of wall and base units with work surfaces over, stainless-steel sink and drainer, space and plumbing for a washing machine, space for a freestanding cooker with fitted hood, access to the bathroom, side and rear double-glazed windows, and a double-glazed door opening onto the rear garden.

Bathroom

Fitted bathroom suite comprising a panelled bath with electric shower over, combined wash-hand basin and WC unit, tiled walls, chrome heated towel rail, and a rear double-glazed window.

First Floor Landing

Stairs rising from the entrance hall, double glazed window to the side and doors to;

Bedroom One

Featuring a double glazed window to the front and a central heated radiator.

Bedroom Two

Featuring a double glazed window to the rear and a central heated radiator.

Bedroom Three

Featuring a double glazed window to the rear and a central heated radiator.

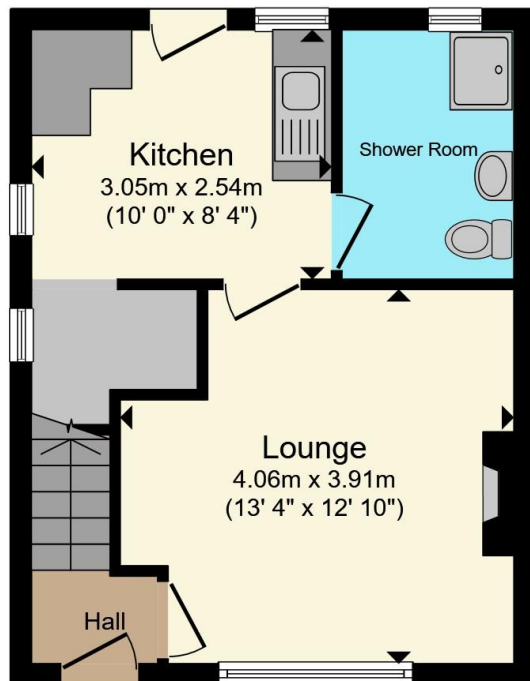
Rear Garden

Attractive tiered garden featuring a slabbed patio, a raised lawned section, rear steps leading to a garden shed, and gated side access.

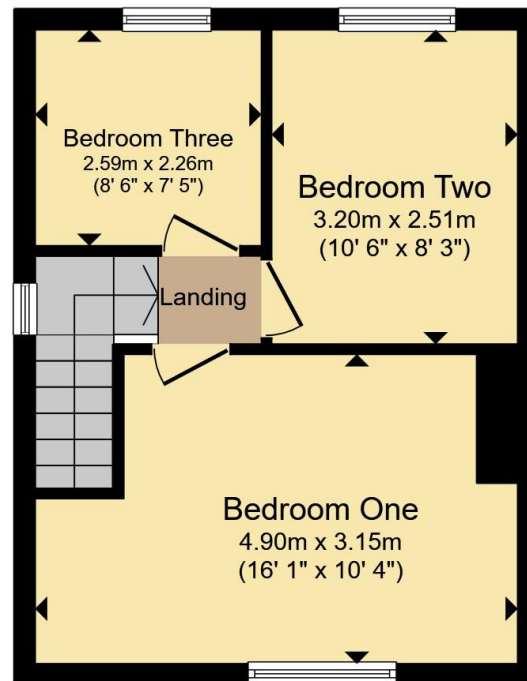








Ground Floor



First Floor

Total floor area 63.2 m² (680 sq.ft.) approx

This floor plan is for illustrative purposes only. It is not drawn to scale. Any measurements, floor areas (including any total floor area), openings and orientation are approximate. No details are guaranteed, they cannot be relied upon for any purpose and they do not form part of any agreement. No liability is taken for any error, omission or misstatement. A party must rely upon its own inspection(s). Powered by www.propertybox.io



To view this property please contact Connells on

T 0121 525 1177
E westbromwich@connells.co.uk

3 Astle Park
 WEST BROMWICH B70 8NS

EPC Rating: D Council Tax Band: A

Tenure: Freehold

view this property online connells.co.uk/Property/WBW311167



1. MONEY LAUNDERING REGULATIONS Intending purchasers will be asked to produce identification documentation at a later stage and we would ask for your co-operation in order that there will be no delay in agreeing the sale. 2. These particulars do not constitute part or all of an offer or contract. 3. The measurements indicated are supplied for guidance only and as such must be considered incorrect. Potential buyers are advised to recheck measurements before committing to any expense. 4. We have not tested any apparatus, equipment, fixtures, fittings or services and it is in the buyers interest to check the working condition of any appliances.

Connells Residential is registered in England and Wales under company number 1489613, Registered Office is Cumbria House, 16-20 Hockliffe Street, Leighton Buzzard, Bedfordshire, LU7 1GN. VAT Registration Number is 500 2481 05.

See all our properties at www.connells.co.uk | www.rightmove.co.uk | www.zoopla.co.uk

Property Ref: WBW311167 - 0002