



St Stephens Court, Woodville,
Swadlincote, Derbyshire



£85,000



Key Features

- First Floor Maisonette
- Private Garden & Parking
- Long Lease
- Peaceful Cul De Sac Setting Opposite St Stephens Church
- One Of Just 8 Maisonettes
- One Bedroom
- EPC rating D
- Leasehold



A commendable first floor maisonette situated on this small cul de sac with just eight other properties. With the benefit of a private garden and allocated parking the property has a long lease and a low service charge. In brief the property comprises: - entrance lobby, landing, living room, fitted kitchen, bedroom and bathroom. There is double glazing and electric heating.

Accommodation In Detail

Entrance door leading to:

Reception Hall

having stairs to first floor.

Landing

leading to:

Lounge 4.9m x 2.86m (16'1" x 9'5")

having wall mounted electric heater and window to front elevation.

Kitchen 3.03m x 1.67m (9'11" x 5'6")

having acrylic sink set into a marble effect work top, tiled splashback, high gloss fronted base cupboards, matching wall cupboards, built-in oven, ceramic hob, appliance space, window to front elevation and wall mounted fan heater.

Bedroom 3.71m x 3.26m (12'2" x 10'8")

having window to rear elevation and wall mounted electric heater.

Bathroom

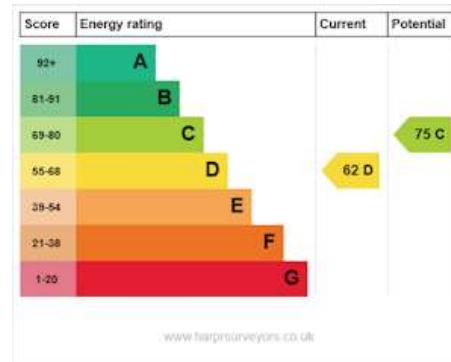
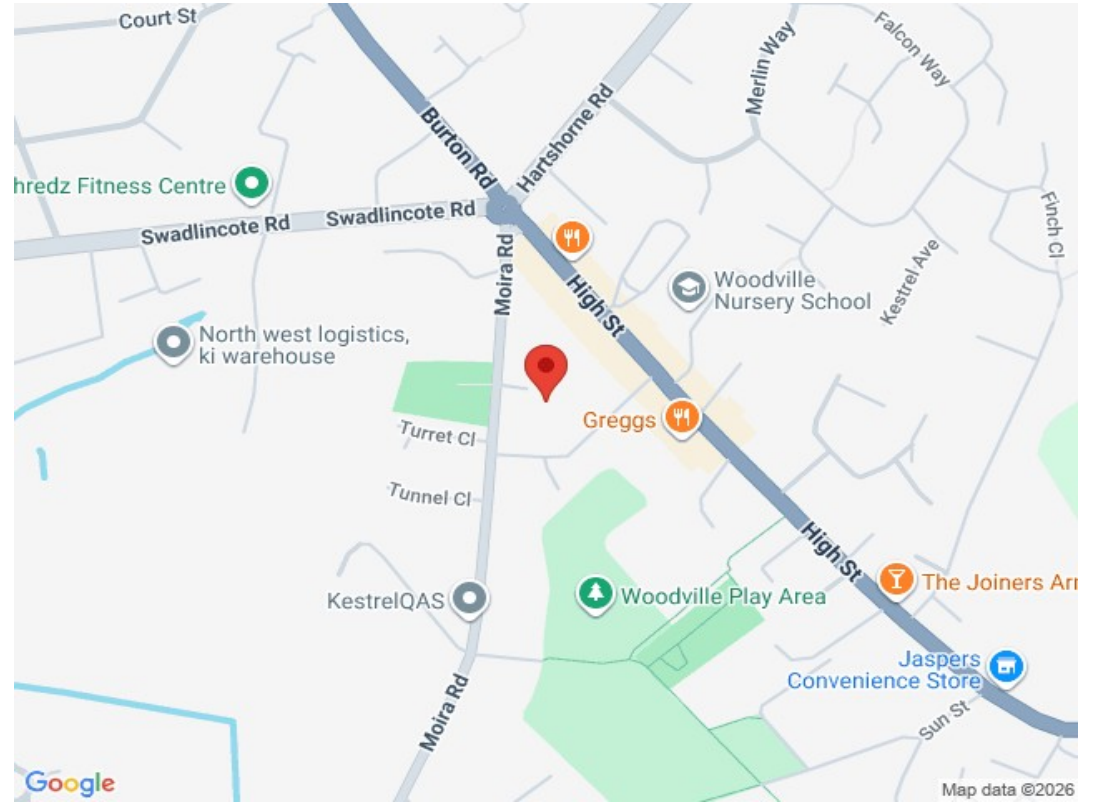
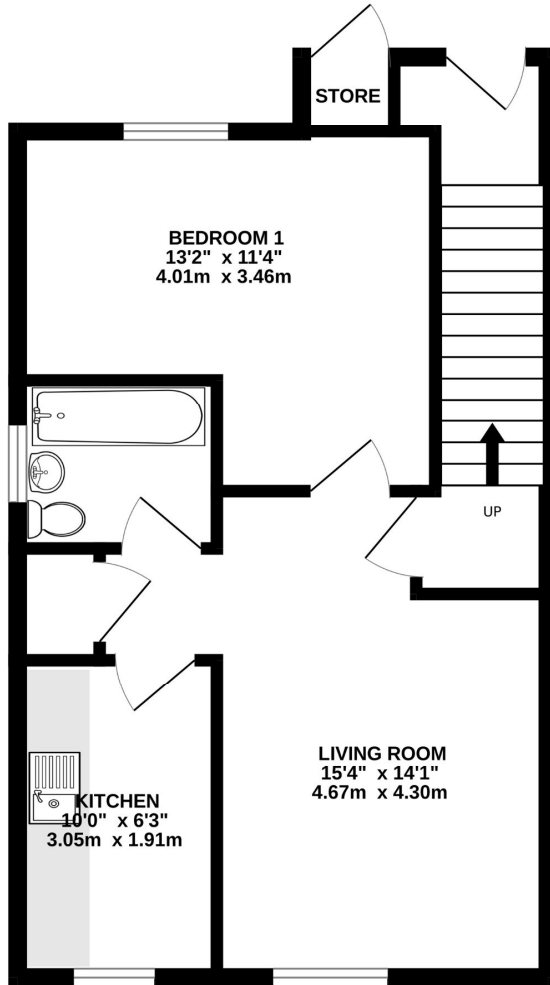
having three piece white suite comprising bath with shower over, wc, wash basin, tiled surrounds and window to side elevation.

Outside

There is an allocated parking space together with additional visitor parking. There is a private allocated garden area to the rear together with a store cupboard adjacent to the front door.



GROUND FLOOR
463 sq.ft. (43.1 sq.m.) approx.



TOTAL FLOOR AREA - 463 sq.ft. (43.1 sq.m.) approx.

Whilst every attempt has been made to ensure the accuracy of the floorplan contained here, measurements of doors, windows, rooms and any other items are approximate and no responsibility is taken for any error, omission or mis-statement. This plan is for illustrative purposes only and should be used as such by any prospective purchaser. The services, systems and appliances shown have not been tested and no guarantee as to their operability or efficiency can be given.
Made with Metropix ©2026

