



## Carlisle Avenue, W3

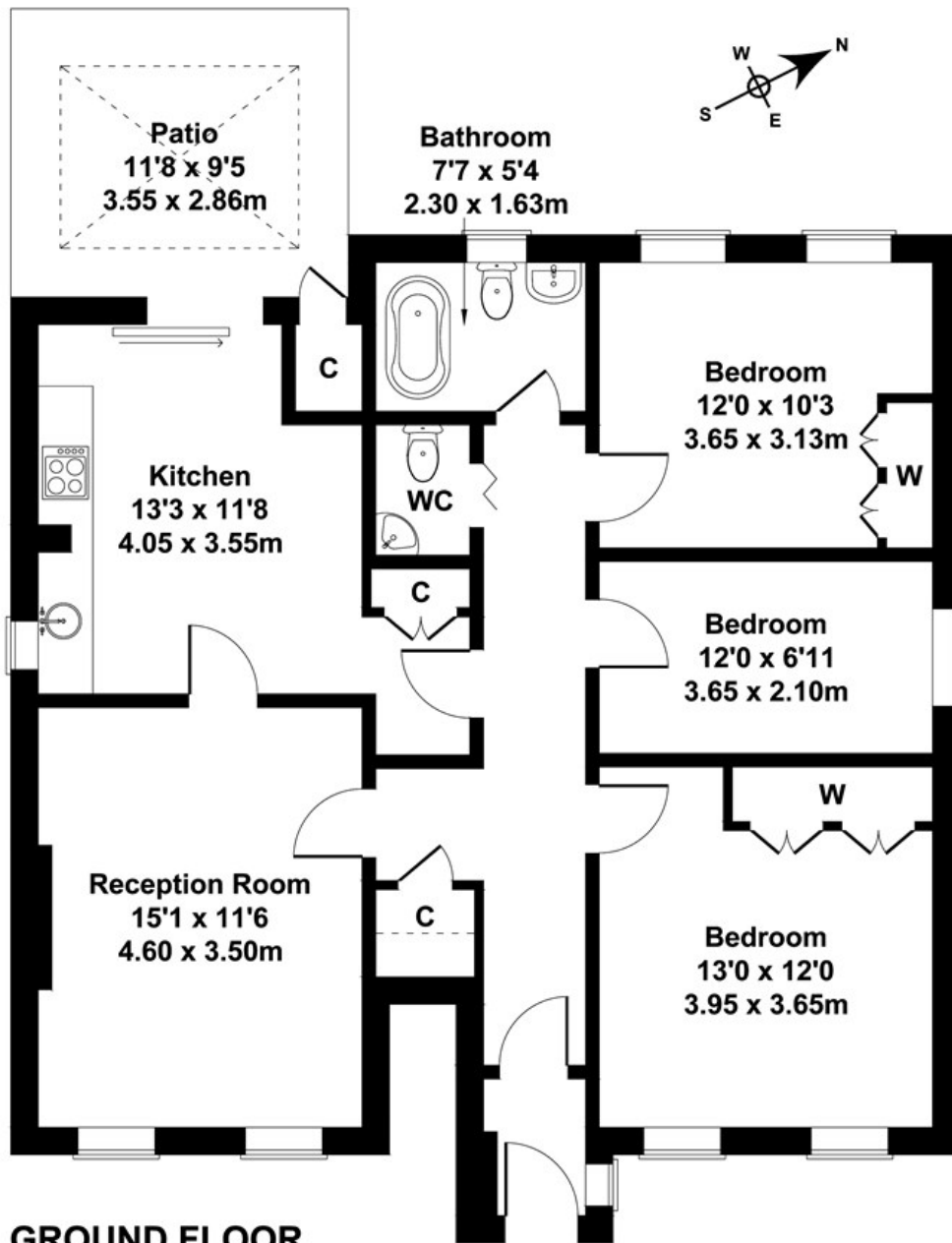
LONG LET. \*\*Sharers only\*\* This three bedroom flat boasts a modern interior and is situated perfectly for local amenities and transport links.

- Available now
- Outside space
- Three double bedrooms
- Separate kitchen
- Close to local transport
- Sharers only

£2,250 PCM

# Carlisle Court

Approximate Gross Internal Area  
958 sq ft - 89 sq m



**GROUND FLOOR**

Not to Scale. Produced by The Plan Portal 2021  
**For Illustrative Purposes Only.**

Energy Efficiency Rating		
	Current	Potential
Very energy efficient - lower running costs		
(92 plus) <b>A</b>		
(81-91) <b>B</b>		
(69-80) <b>C</b>		
(55-68) <b>D</b>		
(39-54) <b>E</b>		
(21-38) <b>F</b>		
(1-20) <b>G</b>		
Not energy efficient - higher running costs		
<b>England &amp; Wales</b>	EU Directive 2002/91/EC	