



170 Udimore Road, Rye
£600,000



170 Udimore Road

Rye

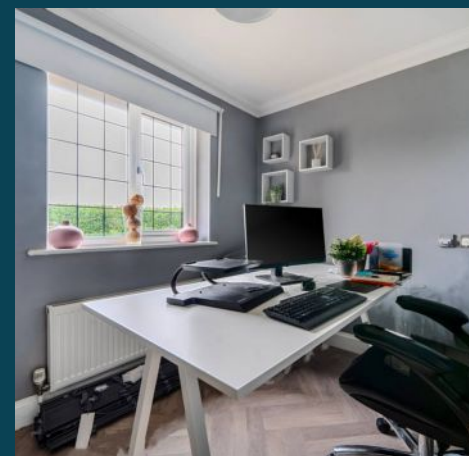
Council Tax band: E

Tenure: Freehold

EPC Energy Efficiency Rating: C

EPC Environmental Impact Rating: D

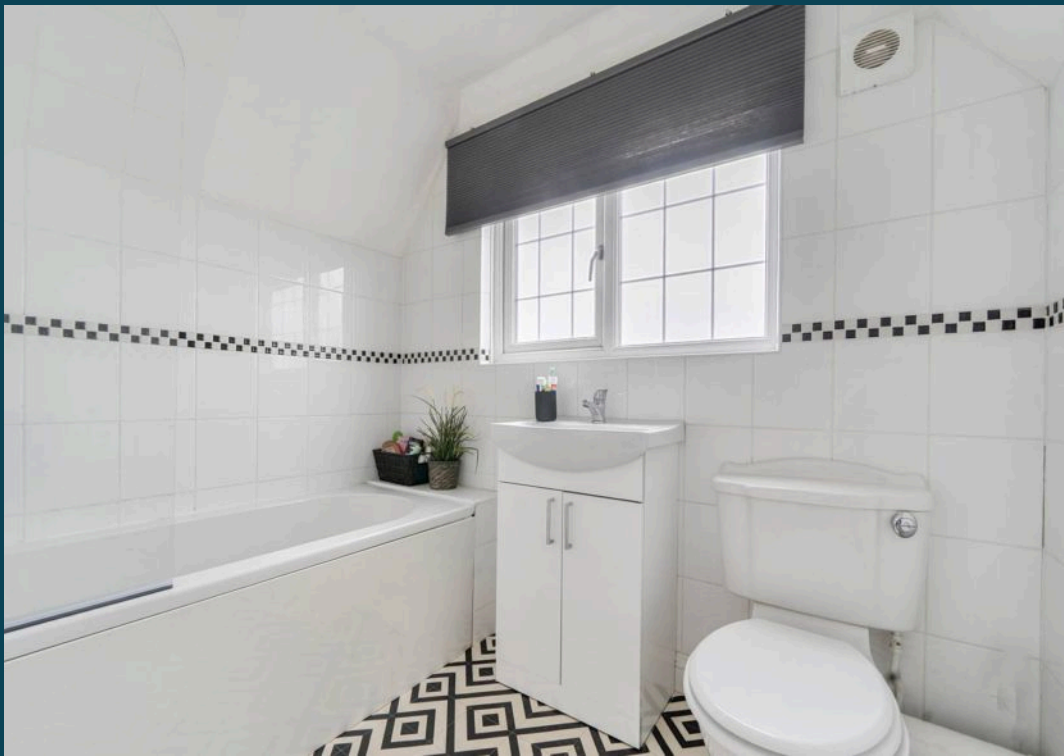
- Rarely Available Three Bed Detached House
- Walking Distance to Rye Town Centre
- Chain Free
- Immaculately Presented
- Four Reception Rooms
- Large Driveway
- En-Suite Shower Room
- Downstairs WC
- Utility Room
- Views to the West











Udimore Road, Rye, TN31

Approximate Area = 1656 sq ft / 153.8 sq m

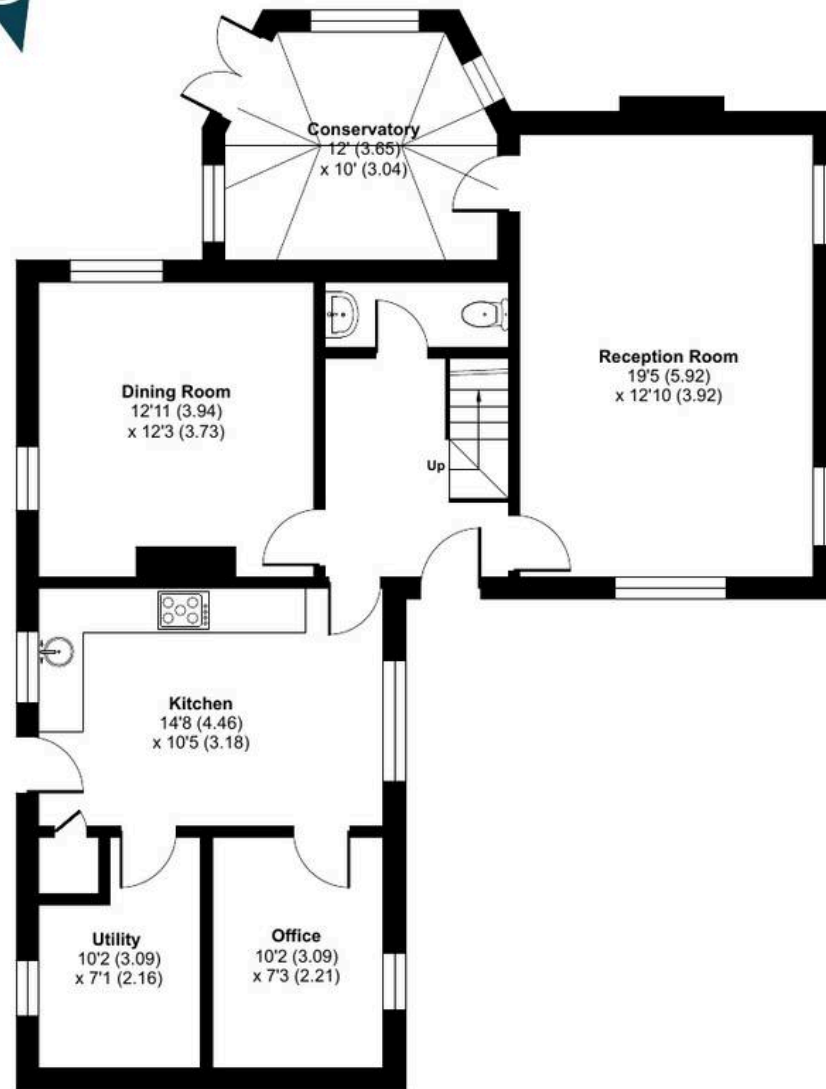
Limited Use Area(s) = 92 sq ft / 8.5 sq m

Total = 1748 sq ft / 162.3 sq m

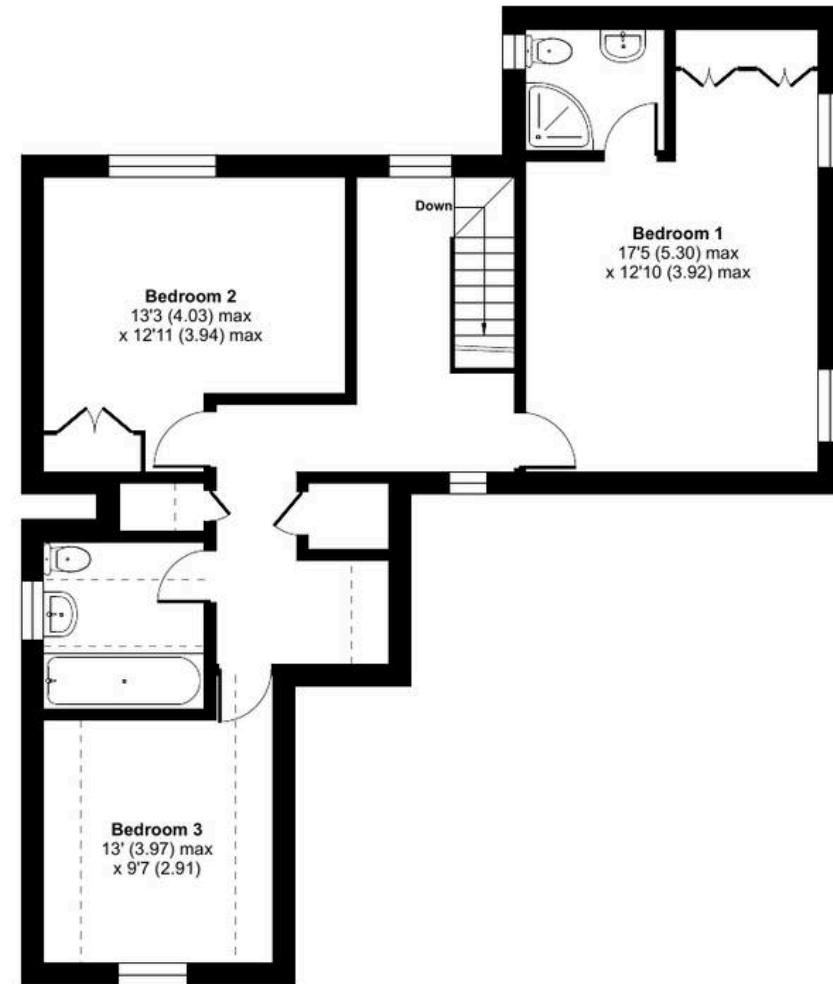
For identification only - Not to scale



Denotes restricted
head height



GROUND FLOOR



FIRST FLOOR



Floor plan produced in accordance with RICS Property Measurement 2nd Edition,
Incorporating International Property Measurement Standards (IPMS2 Residential). © nichecom 2026.
Produced for Nested. REF: 1396688





Nested Rye

01797 903045 • barnaby.osborne@nested.com • nested.com/barnaby-osborne

