



Leyden Street, E1

£600,000

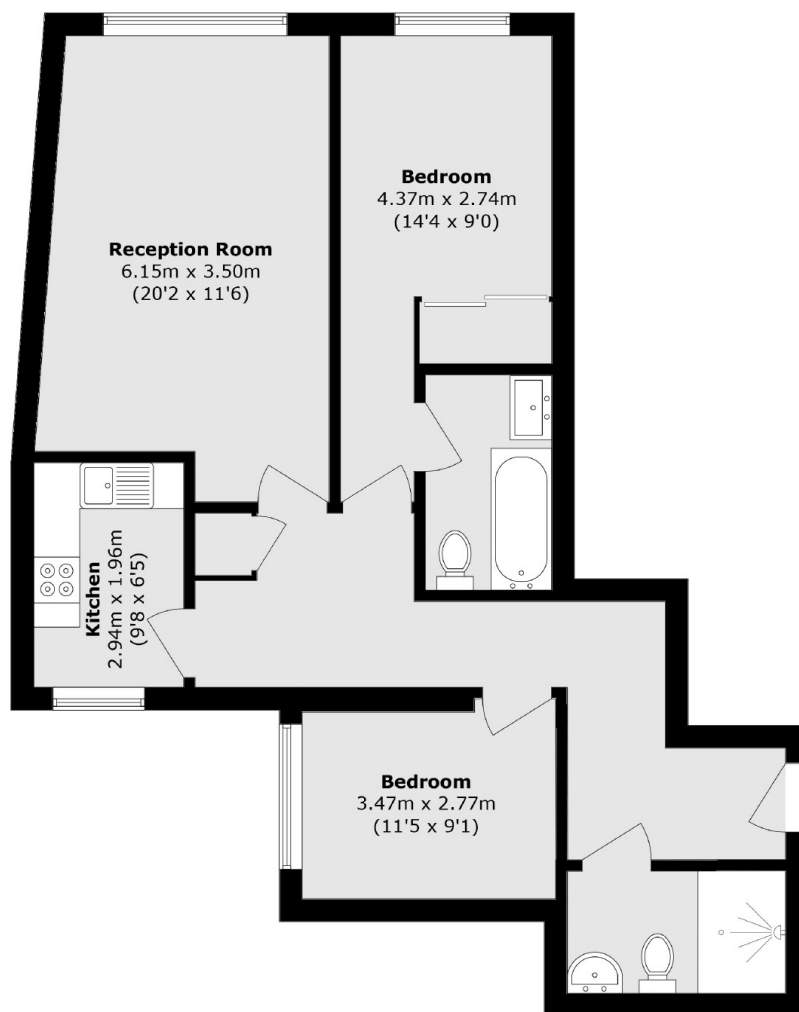
This two-bedroom, third floor apartment, is located in the attractive 'art-deco' style building, just a short distance from Spitalfields Market. The apartment benefits from a large living room, with space to dine, a separate kitchen with fully integrated appliances and two double bedrooms, both with in-built storage and the principle bedroom has an en-suite. The property benefits from further storage in the hallway where you will also locate the family bathroom.

Leyden Street is situated in the heart of Liverpool Street, providing good access to many amenities including local pubs, restaurants and gyms. Well connected with easy routes into Aldgate East, Tower Bridge and Canary Wharf also providing a convenient location with transport links to all corners of the City and beyond.

Features

- Two Double Bedrooms
- Two Bathrooms
- Secure Entry
- Lift Access
- City Views
- Art Deco
- Porter

Leyden Street, London, E1



Total area (approx.): 78.0 sq. m (839.5 sq. ft)

Dexters

Shoreditch
44 Great Eastern Street
London
EC2A 3EP
Sales
0207 483 6371

Energy Rating: C. We aim to make our particulars both accurate and reliable. However they are not guaranteed; nor do they form part of an offer or contract. If you require clarification on any points then please contact us, especially if you're traveling some distance to view. Please note that appliances and heating systems have not been tested and therefore no warranties can be given as to their good working order.

 **RICS** | Regulated
Estate Agent
and Letting Agent

[dexters.co.uk](https://www.dexters.co.uk)