



Squires Court, Highworth, SN6 7FH

£370,000
(Offers in Excess of)

Hanley's

Squires Court, Highworth, SN6 7FH

A beautifully presented two/three bedroom property situated in a sought after gated development built by Archstone Lifestyle Homes for the over 60's, just a short walk of the High Street and Market Place. The spacious and well planned accommodation has been updated by the present owner including a new kitchen, new carpets and flooring and new showers in both bathrooms. The accommodation briefly comprises: To the ground floor; Entrance hall with storage cupboards, downstairs shower room, living room with feature fireplace and electric fire inset, double doors open to the dining room and garden room with French doors to the garden. The re-fitted kitchen has a range of attractive wall and base units with quartz worktops and integrated appliances. To the first floor: Landing with airing cupboard and two further storage cupboards, loft ladder giving access to boarded loft, study, two bedrooms with built-in double wardrobes, bathroom with bath and shower over. Outside to the rear is an enclosed garden with patio area, outside tap, electric point and gated rear access. To the front is an allocated covered carport/parking space and an attractive communal walled garden. The property further benefits from gas radiator central heating and double glazing. There is a management charge of £598.50 per quarter, this includes external repairs and maintenance, communal gardening and security gate maintenance, buildings insurance, window cleaning and tree maintenance. Further information available from our office.



2 Bathrooms



2 bedrooms, bed 3/Study



2 Receptions

EPC: C 79

Council Tax Band: D

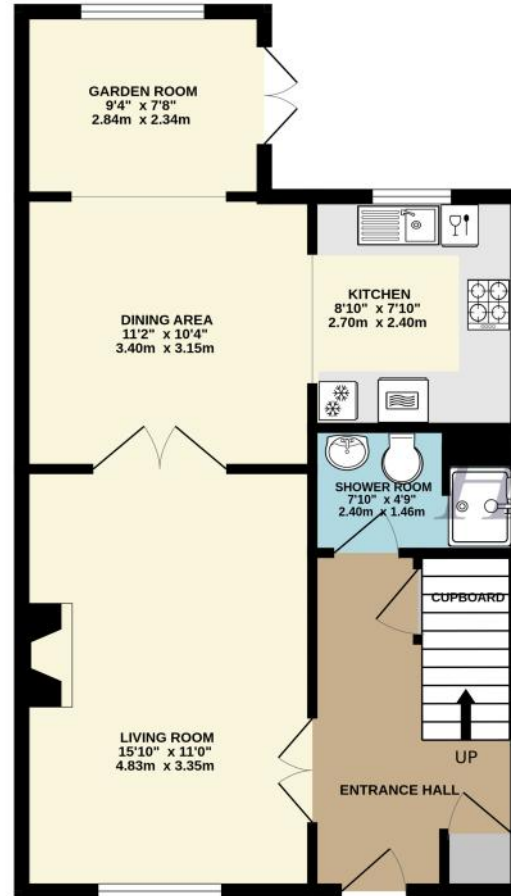
Tenure: Freehold



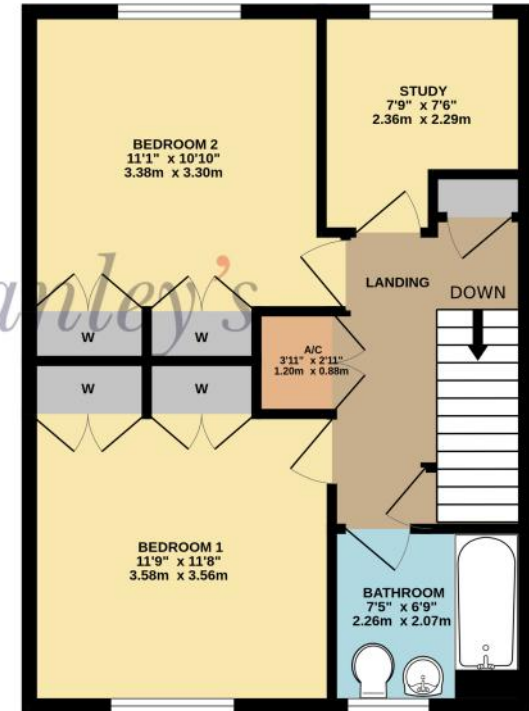
DISCLAIMER. These particulars, whilst believed to be accurate are set out as a general outline for guidance and do not constitute any part of an offer or contract. Intending purchasers should not rely on them as statements or representation of fact, but must satisfy themselves by inspection or otherwise as to their accuracy. No person in this firm's employment has the authority to make or give any representation or warranty in respect of the property. Floor plan measurements and distances are approximate only. We have not carried out a detailed survey nor tested the services, appliances or specific fittings. Your home is at risk if you do not keep up repayments on a mortgage or other loan secured on it.



GROUND FLOOR
561 sq.ft. (52.1 sq.m.) approx.



1ST FLOOR
503 sq.ft. (46.7 sq.m.) approx.



TOTAL FLOOR AREA : 1064 sq.ft. (98.8 sq.m.) approx.

Whilst every attempt has been made to ensure the accuracy of the floorplan contained here, measurements of doors, windows, rooms and any other items are approximate and no responsibility is taken for any error, omission or mis-statement. This plan is for illustrative purposes only and should be used as such by any prospective purchaser. The services, systems and appliances shown have not been tested and no guarantee as to their operability or efficiency can be given.
Made with Metropix ©2025

