

Property ref: 68131

## Oscar Wilde Road, Reading, RG1 3FH

£1,600 PCM

**HASLAM'S**  
Lettings



A modern, two bedroom, third floor apartment, located on the outskirts of Reading town centre.

Reading Borough Council tax band C.

Water supply: Mains

Drainage info: Mains

Electricity supply: Mains

Broadband/Mobile Info: Connections available. For an indication of specific speeds and supply of Broadband and Mobile, we advise applicants go to the Ofcom website Broadband and Mobile Coverage Checker.

**Available 07/05/2026**

- Two double bedroom; Master with en-suite
- Open plan kitchen, living and dining room with a corner balcony
- Manhattan kitchen units complete with oven, hob and hood, and stainless steel splashback
- Bathroom fitted with Roca Sanitary ware; Furnished
- EPC Rating B; £70pcm sundry for hot water and heating via communal boiler
- Allocated parking; Managed by HASLAM'S

\*Fees For Assured Shorthold Tenancies: when you rent a property from us you will be required to pay a sum equivalent to one weeks' rent for a holding deposit. Upon successful application, this amount will be off set against your first months' rent. You will also be required to pay a security deposit equivalent to 5 weeks' rent which will be held and protected in line with Deposit legislation. For more information about our fees please visit: [www.haslams.net](http://www.haslams.net)  
Fees for all other tenancies (Non Housing Act Tenancies / Company Lets): when you rent a property from us we will charge you a one-off fee per property. This charge is the equivalent of 15 days of the monthly rental charge (+VAT) with a minimum fee of £450 (inc.VAT) up to a maximum of £650 (inc.VAT). Other fees may apply depending on your circumstances.

**0118 960 1055**

**[lettings@haslams.net](mailto:lettings@haslams.net) [www.haslams.net](http://www.haslams.net)**

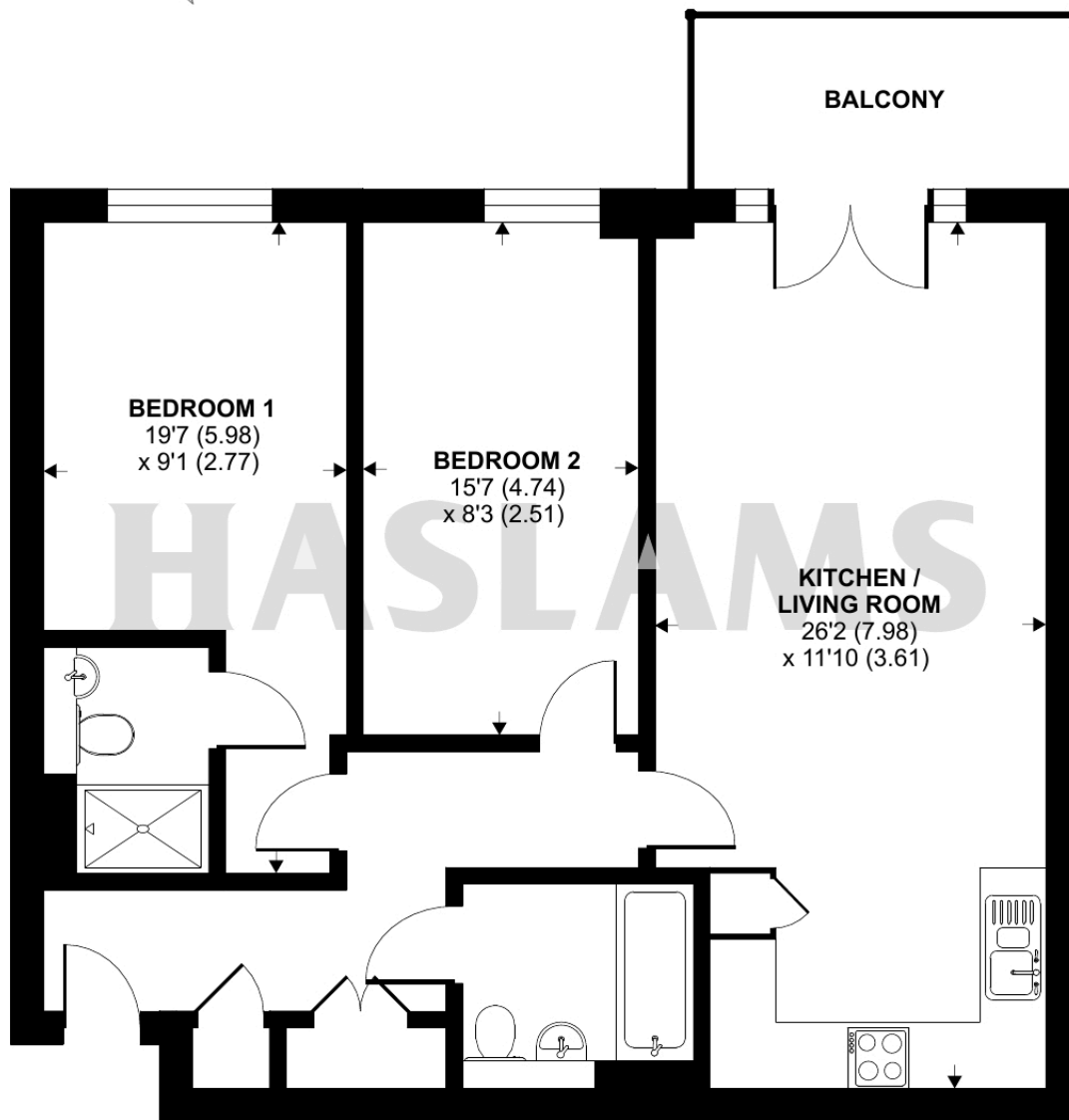
**Haslams Estate Agents Ltd, 159 Friar Street, Reading, Berkshire, RG1 1HE**



# Oscar Wilde Road, Reading, RG1

Approximate Area = 783 sq ft / 72.7 sq m

For identification only - Not to scale



**THIRD FLOOR**

 Floor plan produced in accordance with RICS Property Measurement 2nd Edition, Incorporating International Property Measurement Standards (IPMS2 Residential). © nchecon 2026. Produced for Haslam's. REF: 1431342