



Fairmont Avenue, E14

£250,000

This well presented studio on the 9th floor of this popular dockside development has floor to ceiling windows and wooden flooring. The apartment has an open plan kitchen living area, and comes with plenty of storage. The development itself has a 24 hour concierge as well as access to the gym facilities which also includes a pool, sauna and steam room.

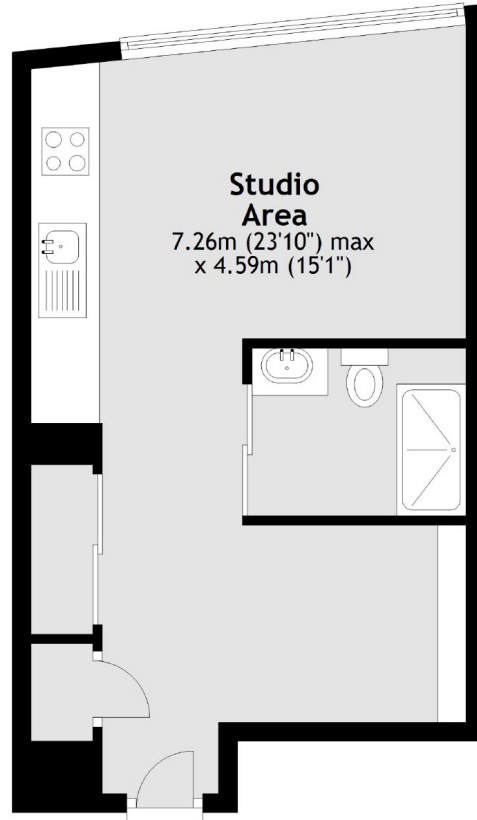
Located a few moments from Canary Wharf for a selection of bars, shops and restaurants. Blackwall DLR provides direct connections to Central London and City airport.

Features

Offers In Excess Of
368.6 sq.ft
Studio
Ninth Floor
Leisure Facilities
24 hr Concierge

Fairmont Avenue, London, E14

9th Floor



**Studio
Area**
7.26m (23'10") max
x 4.59m (15'1")

Total area: approx. 34.2 sq. metres (368.6 sq. feet)