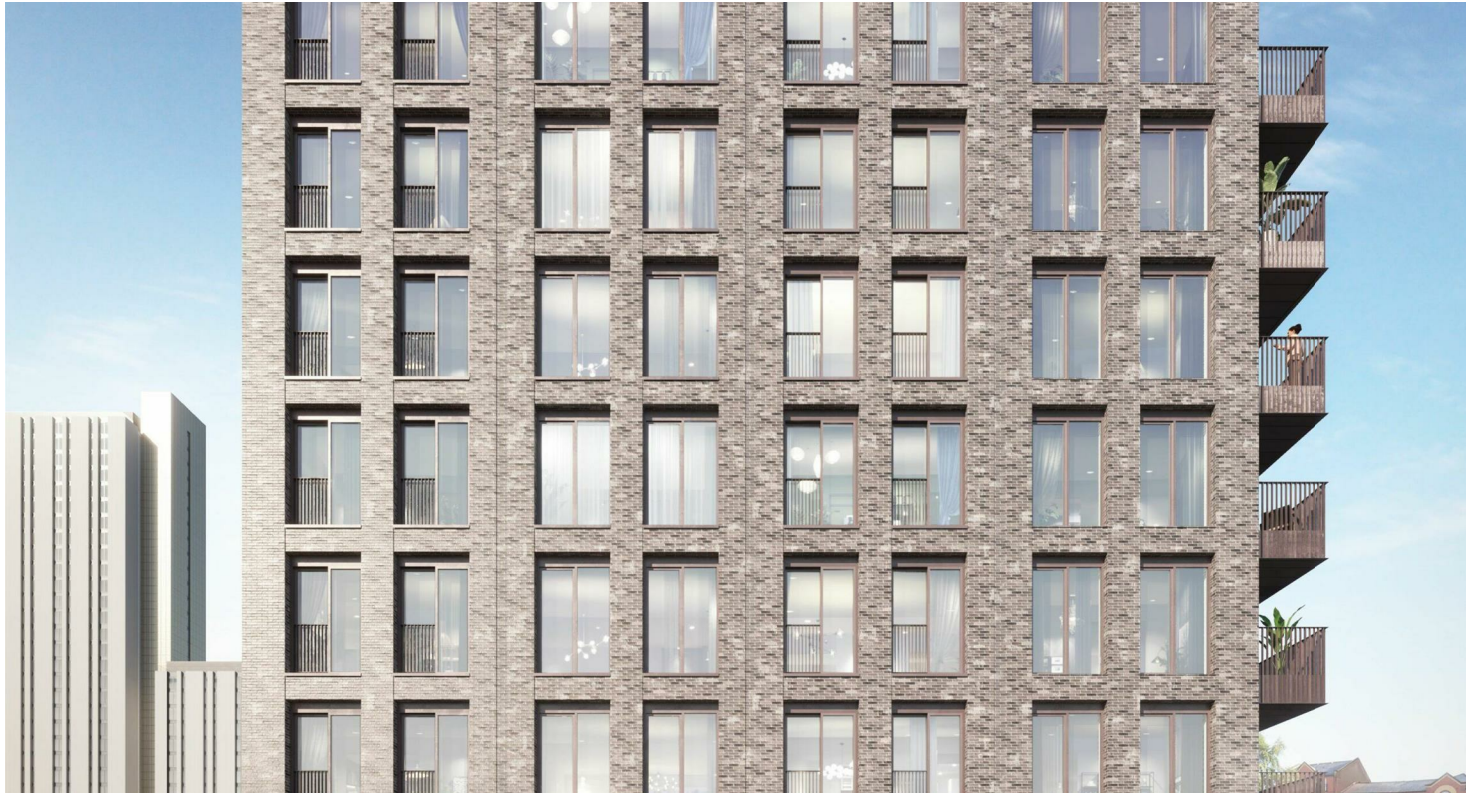




RESIDENTIAL



Flat 206, 11 Lomax Street, Manchester, M1 2GD

£395,000

- Two Double Bedrooms and Two Bathrooms
- Open-plan Kitchen Living
- Private Balcony
- 24 Hour Concierge
- Sold Fully Furnished
- Prime Manchester City Centre Location

Directions

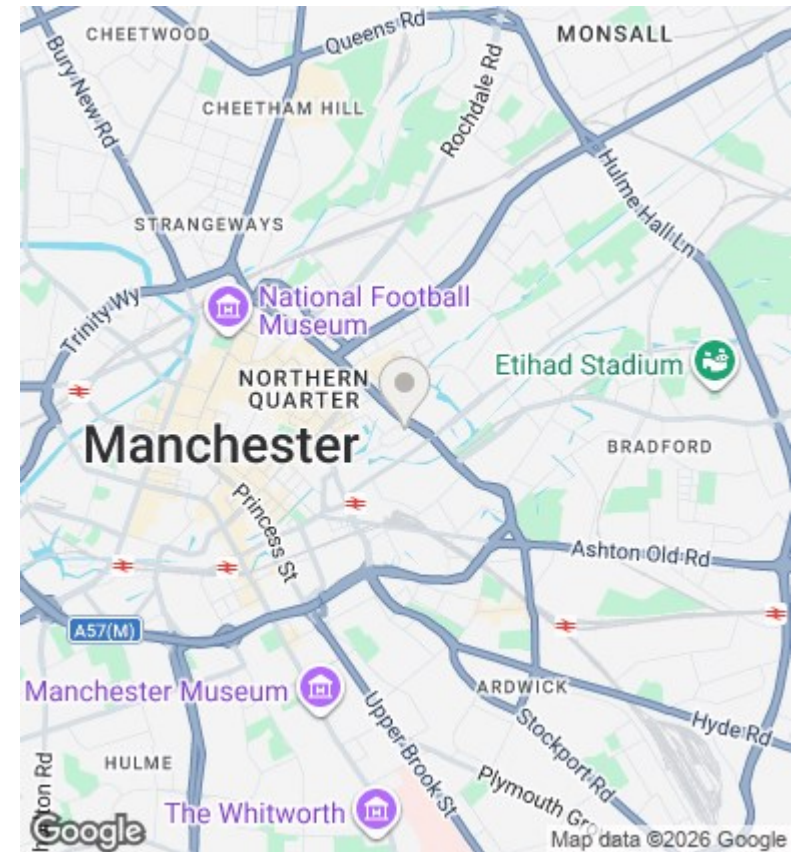
Viewings

Viewings by arrangement only. Call 0113 3224 345 to make an appointment.

Council Tax Band

EPC Rating:

B



Energy Efficiency Rating		Current	Potential
<i>Very energy efficient - lower running costs</i>			
(92 plus) A			
(81-91) B		83	83
(69-80) C			
(55-68) D			
(39-54) E			
(21-38) F			
(1-20) G			
<i>Not energy efficient - higher running costs</i>			
England & Wales		EU Directive 2002/91/EC	