

Frank Harris & Co.



Strand, WC2H

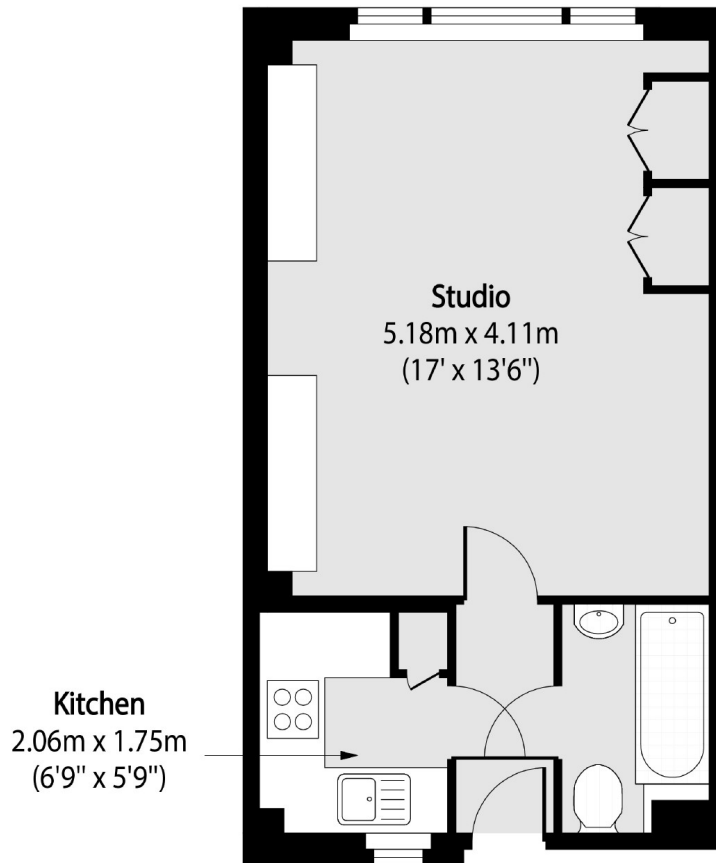
£2,150 pcm

Presented to the market is this bright and spacious studio apartment in the heart of the West End of London. The property has ample storage space, a kitchen separated from the studio room, lift access and is on the third floor.

Phoenix House on Charing Cross Road is in the vibrant and bustling West End of London, close to famous theatres, numerous restaurants, cafés, bars, universities and is in walking distance of Tottenham Court Road underground station.

- Lift Access • Central Location • Transport Links •
- Third Floor • Ample Storage • Studio •

Frank Harris & Co.



Total area (approx): 30.29 sq m (326 sq. ft)

Frank Harris & Co. Bloomsbury and Kings Cross
81 Marchmont Street,
London, WC1N 1AL
020 7387 0077
bloomsburylettings@frankharris.co.uk

Energy Rating: TBD. We aim to make our particulars both accurate and reliable. However they are not guaranteed; nor do they form part of an offer or contract. If you require clarification on any points then please contact us, especially if you're traveling some distance to view. Please note that appliances and heating systems have not been tested and therefore no warranties can be given as to their good working order.

