



Cornwall Mews South
South Kensington, SW7

CHESTERTONS





A beautifully two double bedroom mews house benefitting from a large reception room and kitchen and wooden floors on the ground floor. Featuring two large double bedrooms with ample natural light and two bathrooms.

- Charming two bedroom mews house
- Two great sized bedrooms with good built in storage
- Brand new kitchen and modern bathrooms
- Located on a lovely quiet mews street close to Gloucester Road tube station

£4,500 pcm

Additional tenant charges apply (fees apply to non-AST tenancies only)

Tenancy Agreement Fee: £300

References per Tenant/Guarantor: £60

Inventory check (approx. £100 – £250 inc. VAT)

chestertons.co.uk/property-to-rent/applicable-fees

| Energy Efficiency Rating | | Current | Potential |
|--------------------------|---|---------|-----------|
| 90-100 | A | | |
| 81-89 | B | | |
| 72-80 | C | | 80 |
| 63-71 | D | 54 | |
| 54-62 | E | | |
| 45-53 | F | | |
| 35-44 | G | | |

Not energy efficient - higher running costs

England, Scotland & Wales EU Directive 2002/91/EC

Minimum Term: 12 months
Deposit Required: £6,230.77
Local Authority: Kensington and Chelsea
Council Tax Band: G
EPC Rating: E
Unfurnished

Chestertons South Kensington Lettings

44-48 Old Brompton Road
 South Kensington
 London
 SW7 3DY

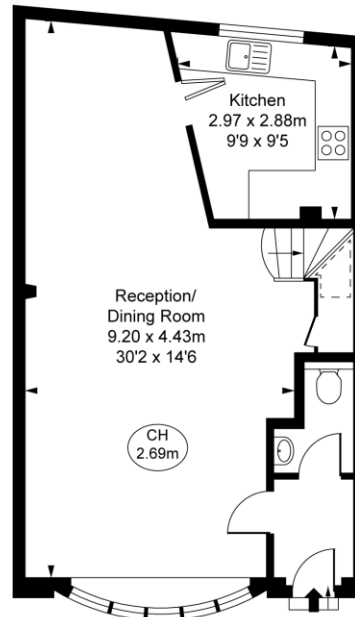
southkensingtonlettingsusers@chestertons.co.uk
 02075891244

Cornwall Mews South, SW7

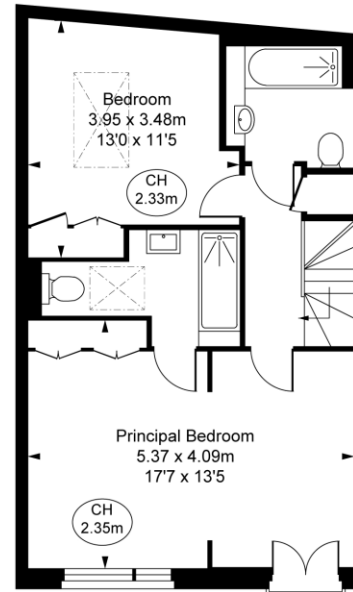
Approximate Gross Internal Area
95.76 sq m / 1,031 sq ft

(Including restricted height
 under 1.5m [-----])

(CH = Ceiling Heights)



Ground Floor
 Approximate Gross Internal Area
48.40 sq m / 521 sq ft



First Floor
 Approximate Gross Internal Area
47.35 sq m / 510 sq ft

This plan is not to scale. It is for guidance and not for valuation purposes.
 All measurements and areas are approximate only, and have been prepared in accordance with the current edition of the RICS Code of Measuring Practice.
 © Fulham Performance

Chesterton UK Services Limited trading as Chestertons for themselves and for the vendor of this property whose agents they are, give notice that (i) these particulars do not constitute any part of an offer or contract, (ii) all statements contained within these particulars are made without responsibility on the part of Chestertons or the vendor, (iii) whilst made in good faith, none of the statements contained within these particulars are to be relied upon as a statement or representation of fact, (iv) any intending purchasers must satisfy themselves by inspection or otherwise as to the correctness of each of the statements contained within these particulars, (v) the vendor does not make or give either Chestertons or any person in their employment any authority to make or give representation or warranty whatsoever in relation to this property. Wide angle lenses may be used. ©Copyright Chestertons | Chesterton Global Ltd | Registered Office 5th Floor, The Lantern, 75 Hampstead Road, London, NW1 2PL Registered Company Number 05334580.



This paper is
 100% recyclable