



**Belitha Villas, N1**

**£1,100,000**

**Dexters**



## Belitha Villas, N1

A rare opportunity to purchase a stunning maisonette positioned in one of Barnsbury's most desirable roads. This well arranged property has a private south facing garden, off street parking and comes with a share of the freehold.

Internally there are two double bedrooms with two bathrooms (one en-suite and dressing area to master), utility room, custom built kitchen and a separate living room with French doors to the garden.

The property has remodel and extension potential with planning permission given for a rear extension into the extensive private garden.

Belitha Villas is a desirable tree lined street in the Barnsbury Conservation area. The street is made up mostly of attractive residential houses and is within easy reach of all the shopping, transport and local amenities of Islington and Upper Street.

### Features

- Large Private Garden
- Private Entrance
- Off Street Parking
- Share of Freehold
- Two Bedroom
- Extension Potential

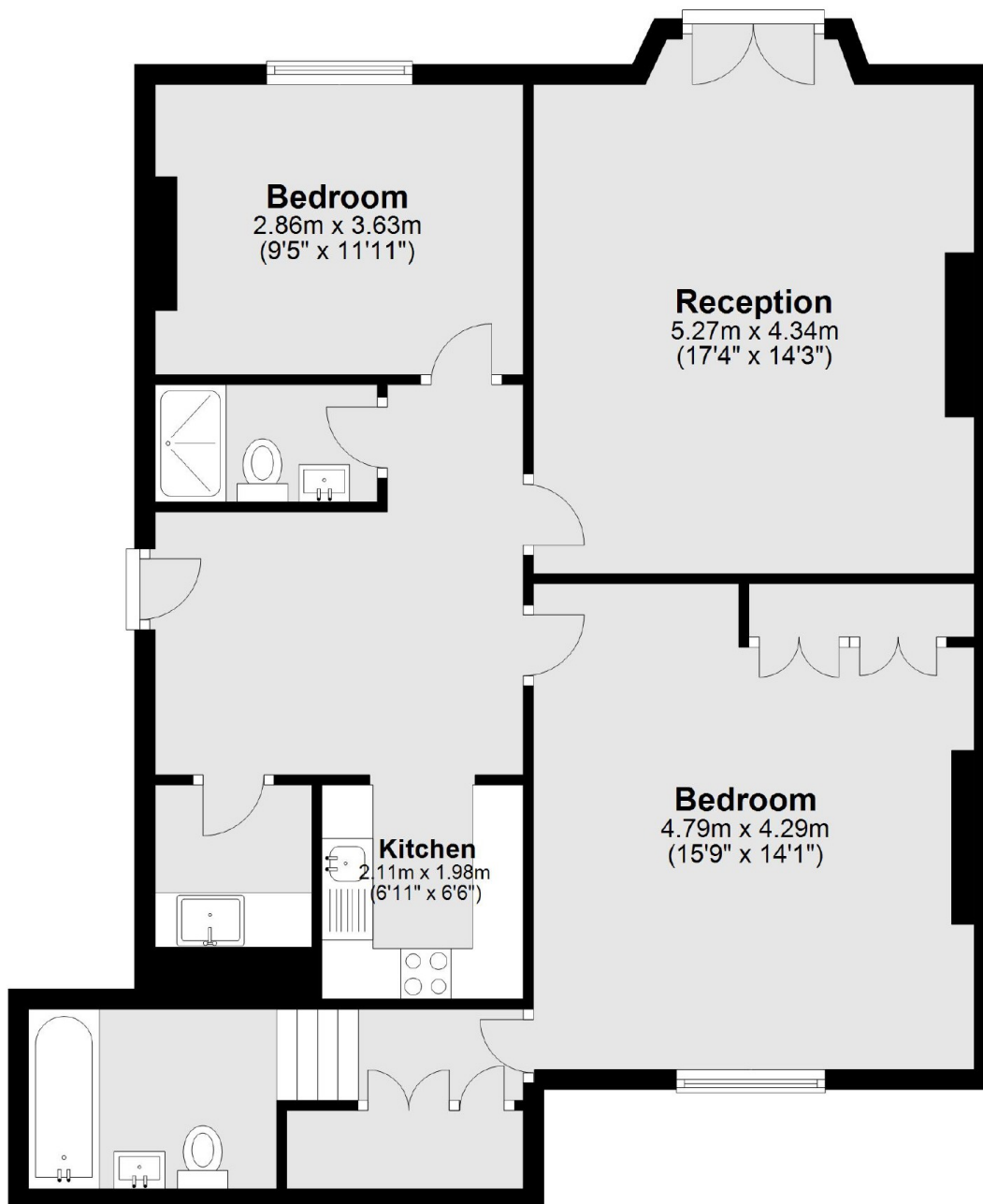






# Belitha Villas, London, N1

## Lower Ground Floor



Total area: approx. 85.7 sq. metres (922.9 sq. feet)