



# 1a Douro Terrace

Le Mont Pinel



# 1a Douro Terrace, Le Mont Pinel, St Helier, JE2 4RS

Welcome to this impressive apartment, set within a charming historic terrace. Offering spacious accommodation and having been beautifully updated, while carefully retaining many of its original features, blending classic character with modern comfort.

Upon entering, you are welcomed by an elegant 25ft-long entrance hall, setting the tone for the rest of the apartment. Double glass doors lead into the spacious kitchen, which has been beautifully modernised and features a large central island, perfect for both everyday living and entertaining. Just off the kitchen is a versatile study/home office.

A further set of double doors opens into the bright and expansive lounge/diner. With its original feature fireplace, herringbone wooden flooring, and tall windows, this room exudes class and elegance, perfectly in keeping with the character of the apartment.

Continuing down the hall, there are two generous en-suite double bedrooms. The primary bedroom benefits from a dressing area leading through to the bathroom, while the second bedroom includes a large airing cupboard that could easily serve as a walk-in wardrobe. There is also a beautifully tiled W/C, a utility cupboard with space for a washer and dryer, and an additional room that can be used as a bedroom or additional study.

Externally, the apartment enjoys access to a good-sized private garden, shared equally with one other apartment, as well as large communal gardens to the front. The property also benefits from a spacious double garage, parking for one vehicle, and additional visitor parking.



Parish: St Helier

Qualification: Qualified

Tenure: Share Transfer

Price £1,080,000



- Spacious apartment set on the outskirts of town
- Beautifully modernised while retaining original features
- Large contemporary kitchen with central island and separate study
- Two en-suite double bedrooms plus additional bedroom/study
- Elegant entrance hall and bright, spacious lounge/diner with period charm
- Private garden, communal grounds, garage and parking







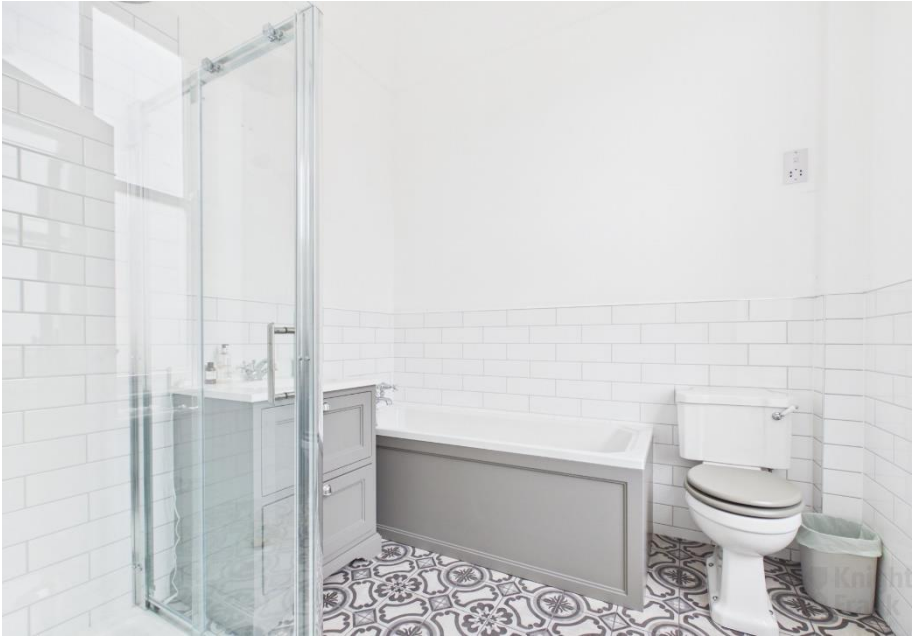






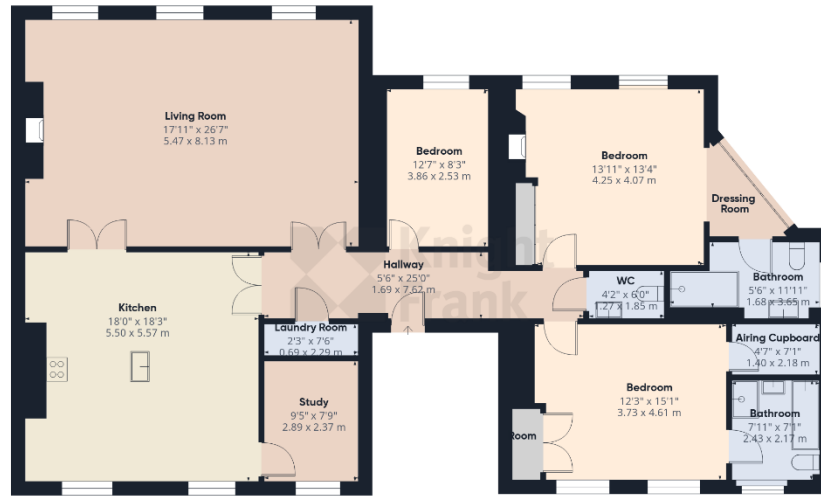












Ground Floor Building 1



Ground Floor Building 2

Approximate total area<sup>(1)</sup>

2080 ft<sup>2</sup>  
193.3 m<sup>2</sup>

(1) Excluding balconies and terraces

Calculations reference the RICS IPMS 3C standard. Measurements are approximate and not to scale. This floor plan is intended for illustration only.

GIRAFFE360

This plan is for layout guidance only. Not drawn to scale unless stated. Windows and door openings are approximate. Whilst every care is taken in the preparation of this plan, please check all dimensions, shapes and compass bearings before making any decisions reliant upon them.

Mains drains

Mains water

Gas & Electric heating

Service charge of approx £295 pcm to include:

Rates

Outdoor electricity

Building insurance

Outdoor communal garden

Water

+441534 877977

Knight Frank Jersey

37-39 Halkett Place St Helier, Jersey JE2 4WG

[knightfrank.je](http://knightfrank.je)

Your partners in property

---

1. Particulars: These particulars are not an offer or contract, nor part of one. You should not rely on statements given by Knight Frank Jersey in the particulars, by word of mouth or in writing (“information”) as being factually accurate about the property, its condition or its value. Neither Knight Frank Jersey nor any joint agent has any authority to make any representations about the property, and accordingly any information given is entirely without responsibility on the part of Knight Frank Jersey. 2. Material Information: Please note that the material information is provided to Knight Frank Jersey by third parties and is provided here as a guide only. While Knight Frank Jersey has taken steps to verify this information, we advise you to confirm the details of any such material information prior to any offer being submitted. If we are informed of changes to this information by the seller or another third party, we will use reasonable endeavours to update this as soon as practical. 3. Photos, Videos etc: The photographs, property videos and virtual viewings etc. show only certain parts of the property as they appeared at the time they were taken. Areas, measurements and distances given are approximate only. 4. Regulations etc: Any reference to alterations to, or use of, any part of the property does not mean that any necessary planning, building regulations or other consent has been obtained. A buyer must find out by inspection or in other ways that these matters have been properly dealt with and that all information is correct. 5. Fixtures and fittings: A list of the fitted carpets, curtains, light fittings and other items fixed to the property which are included in the sale (or may be available by separate negotiation) will be provided by the Seller’s Lawyer. Particulars dated 16/04/2026. All information is correct at the time of going to print.

