



## Brandram Road, SE13

£300,000

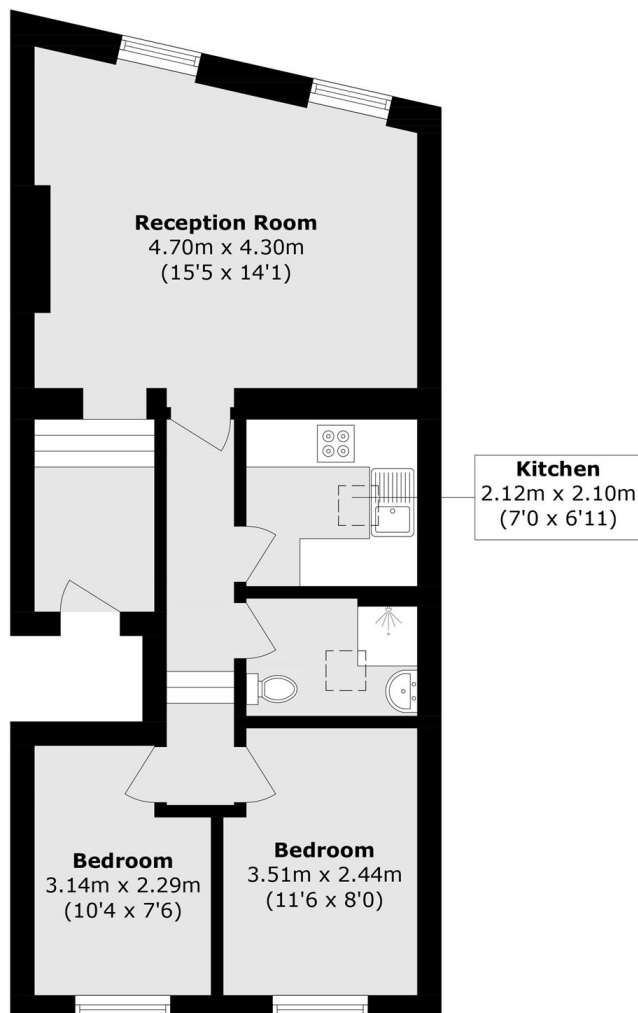
Positioned on one of the area's most desirable residential roads, this two-bedroom first-floor conversion apartment offers stylish living with broad appeal for first-time buyers and investors alike. The apartment comprises a bright and generously proportioned front reception room filled with natural light, a separate contemporary fitted kitchen, a sleek modern shower room, and two bright double bedrooms positioned to the rear, offering a peaceful and private outlook.

Perfectly placed for the lifestyle offerings of both Blackheath Village and Lee High Road, the property is moments from an eclectic mix of independent boutiques, cafés, acclaimed restaurants, vibrant bars, and the much-loved weekly farmers' market, alongside a calendar of local cultural events and green open spaces. Transport connections are superb, with Blackheath Station providing regular services into London Bridge, Cannon Street, and Victoria, while nearby Lewisham Station offers further rail links alongside DLR services for swift access to Canary Wharf and the City. The area is also exceptionally well connected by an extensive network of bus routes, including night services and the Superloop, ensuring convenient travel across London at all hours.

### Features

Close to Blackheath Village  
Two Bedrooms  
Great Transport Links  
Separate Kitchen  
Ideal For First Time Buyers  
Conversion Flat

Brandram Road,  
London, SE13



Total area (approx.): 52.4 sq. m ( 564.0 sq. ft)