



35a Drew Street, Brixham - TQ5 9LA

Guide Price £230,000





## 35a Drew Street

Brixham,

Spacious 4-bed first floor apartment in 1930s building, St Marys, Brixham. Includes garage, driveway, character features, and modern updates. Close to schools, shops, and transport. Council Tax band: B

Tenure: Share of Freehold

EPC Energy Efficiency Rating: C

EPC Environmental Impact Rating: C

- Four generously sized bedrooms
- Garage and driveway parking
- Fitted kitchen
- 1930's build
- First floor apartment
- Situated in the St marys area of Brixham.
- Located close to schools, shops and bus routes



## 35a Drew Street

Brixham,

The property is situated just over half a mile from Brixham town centre, on a near-level walk, which boasts an array of shops, facilities and amenities as well as the picturesque Brixham harbour. The property is located just a very short 30 second walk to Eden Park Primary School and is about a third of a mile from Brixham secondary school. St Mary's Square is less than a two minute walk away where you can find a convenience store, sub post office, public house and takeaways. The local bus passes the front door with connections to the town centre where you can find the main bus services to the neighbouring towns of Paignton and Torquay.

### Absolute Sales & Lettings

Absolute Sales & Lettings, 36 Fore Street - TQ5 8DZ

01803 214214

[brixham@movewithabsolute.co.uk](mailto:brixham@movewithabsolute.co.uk)

[movewithabsolute.co.uk/](http://movewithabsolute.co.uk/)



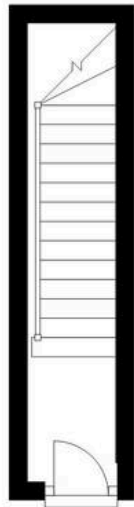
### First Floor

Approx. 72.0 sq. metres (775.3 sq. feet)



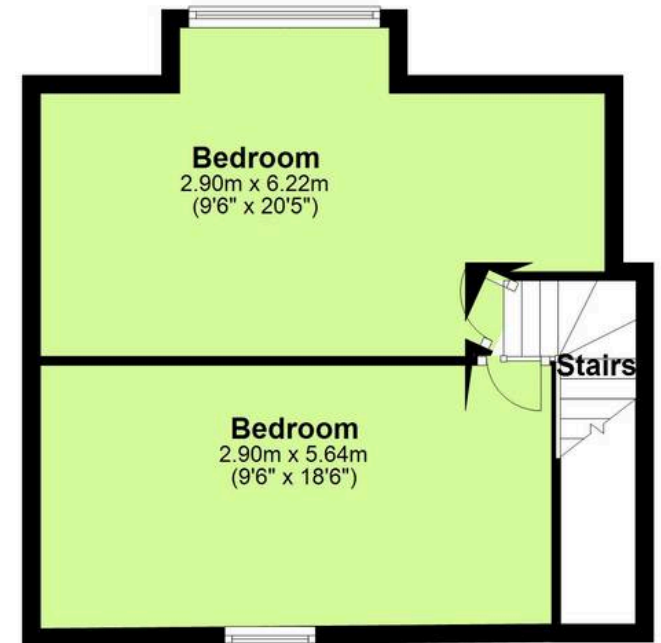
### Ground Floor

Approx. 4.9 sq. metres (53.1 sq. feet)



### Second Floor

Approx. 0.1 sq. metres (0.6 sq. feet)



Total area: approx. 77.0 sq. metres (829.0 sq. feet)