



Twickenham Road, TW7

£450,000

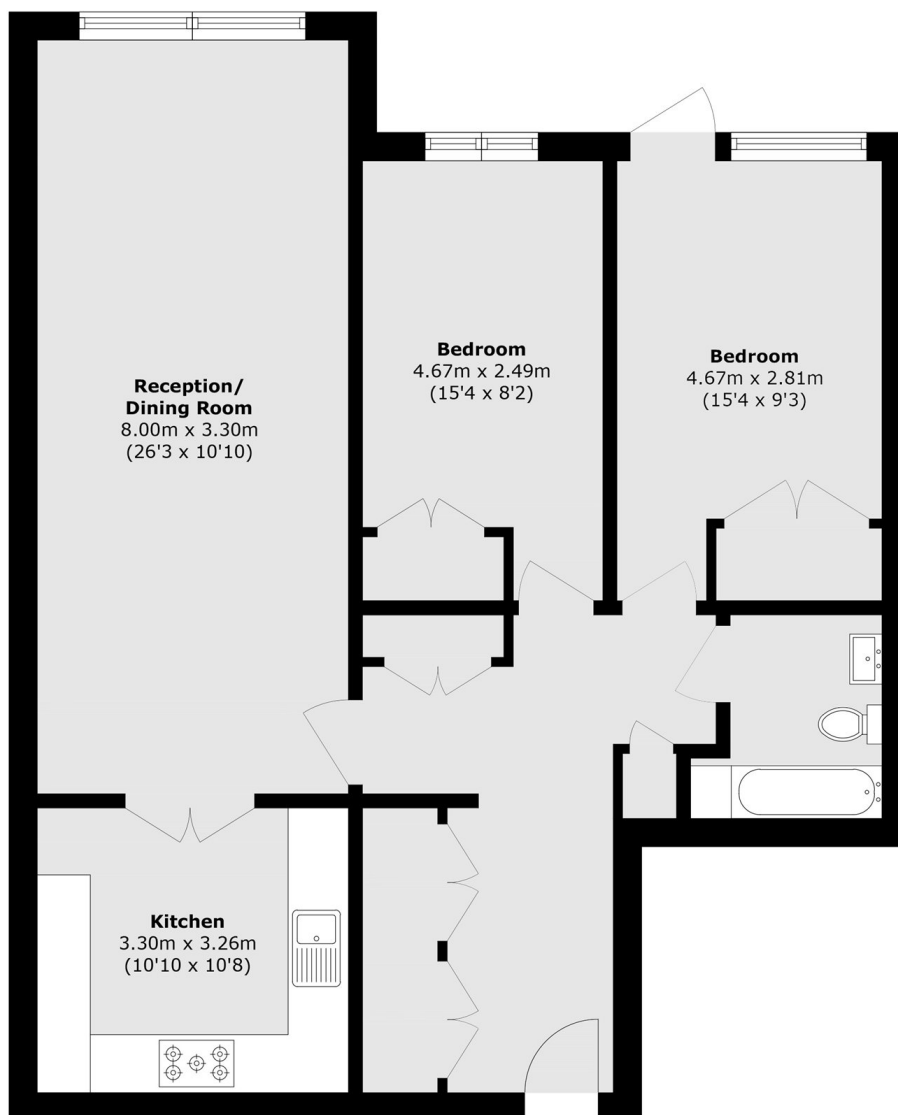
Set within a secure gated development, this spacious ground floor apartment offers two generous double bedrooms and a plenty of integrated storage. The property further benefits from secure underground parking and direct access to a patio area, making it an opportunity not to be missed.

Holme Court is a gated development located within easy reach of Old Isleworth high street with its wide range of local amenities and is moments from the River Thames with its tow paths to St Margarets and Richmond. Transport links include Isleworth Station and for the motorist the A316 offers access in and out of London.

Features

- Secure Gated Development
- Two Double Bedrooms
- Ground Floor
- Underground Parking
- Ample Storage
- Communal Gardens

Twickenham Road, Old Isleworth, TW7



Total area (approx.): 84.5 sq. m (909.5 sq. ft)