



HINCHLIFFE  
HOLMES



10 FLORENCE WAY



#### **GROUND FLOOR**

Entrance Hall | Dining Kitchen | Lounge | WC

#### **FIRST FLOOR**

Landing | Bedroom One | Bedroom Two  
Bedroom Three | Bathroom

#### **OUTSIDE**

Parking | Gardens

# 10 FLORENCE WAY

Winsford | CW7 3SJ

Situated in a popular sought after location on the edge of Winsford Town Centre, a well-presented three bedroom semi-detached family home on a mature development with spacious accommodation throughout. Landscaped gardens to both the front and rear alongside driveway providing off road parking for multiple vehicles.

Winsford is home to a superb state of the art leisure centre and community facility including a gym, swimming pool, squash courts, cafe, bar and meeting rooms which host many fitness classes and activities for all ages. There is also a local football club, cricket club, Winsford Flash Sailing Club and a nearby athletics club. The Winsford Flashes is very popular with walkers, anglers and wildlife watchers

alike. Winsford has a nationally recognised award-winning Neighbourhood Plan, which was voted in by residents in a referendum. There is a good selection of supermarkets including, Tesco, Morrison's, Asda and Aldi as well as smaller convenience stores. Winsford has ten primary and four secondary schools to choose from along with two sixth-form colleges. It also has several children's day nurseries. Winsford has excellent transport links including its own train station on the Liverpool to Birmingham main line and a very good bus network.

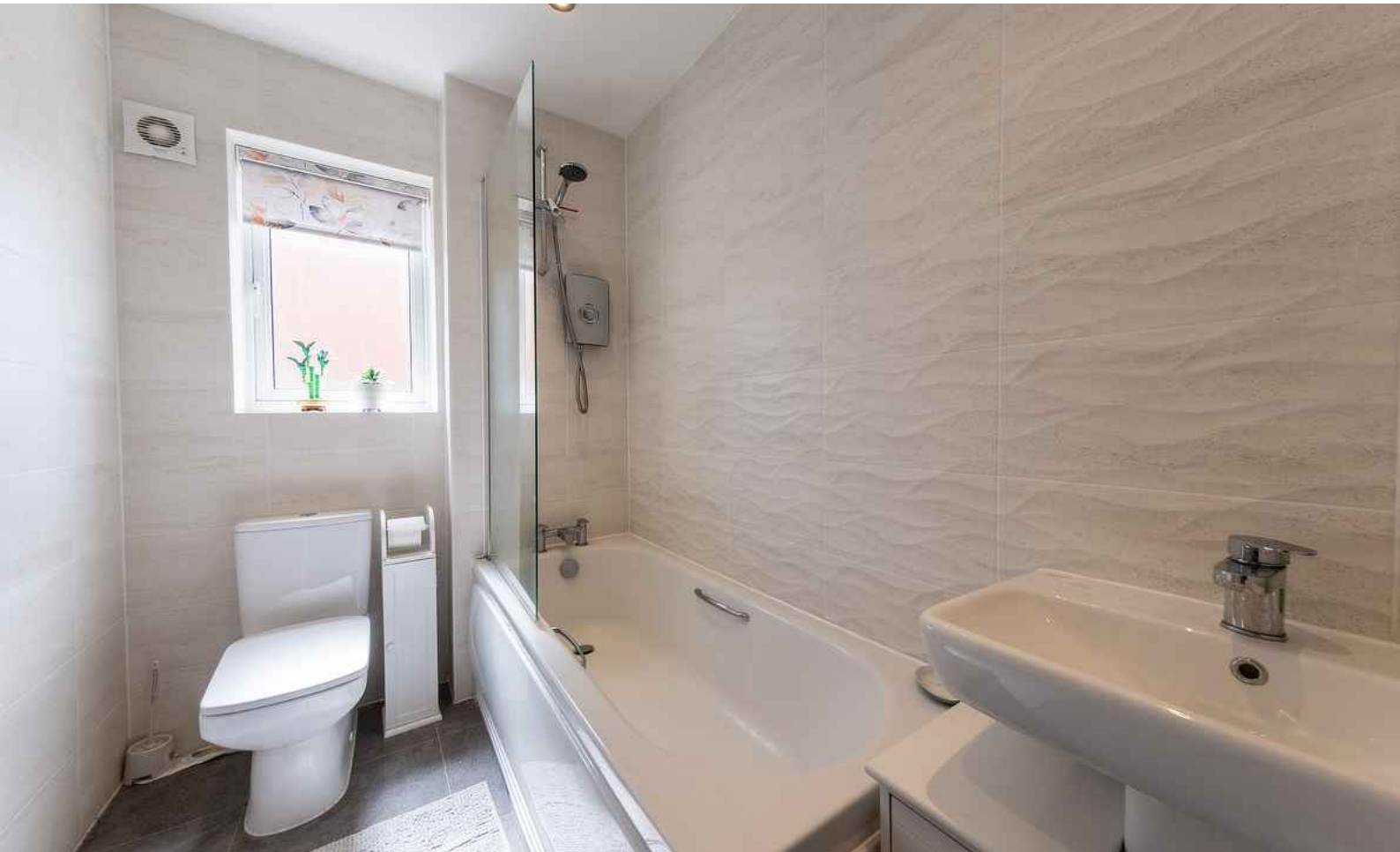
The M6 motorway at junction 18 at Middlewich is the nearest motorway link, with the A54 connecting the town to it. The nearest airports are Liverpool John Lennon Airport and Manchester Airport.











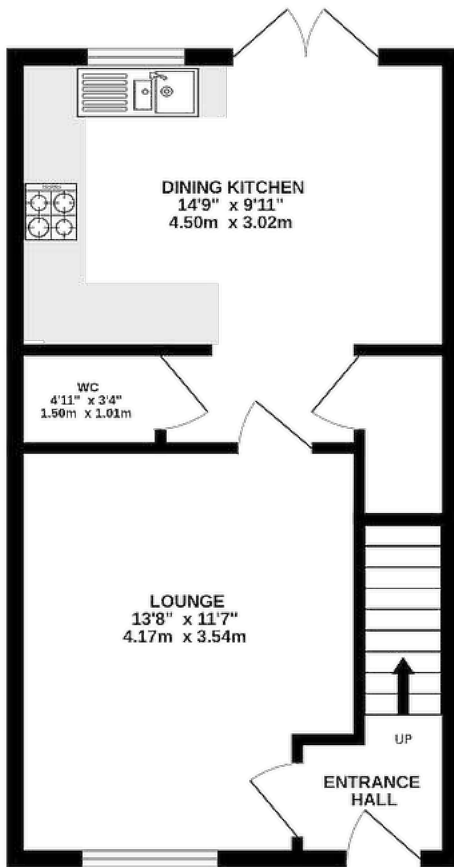




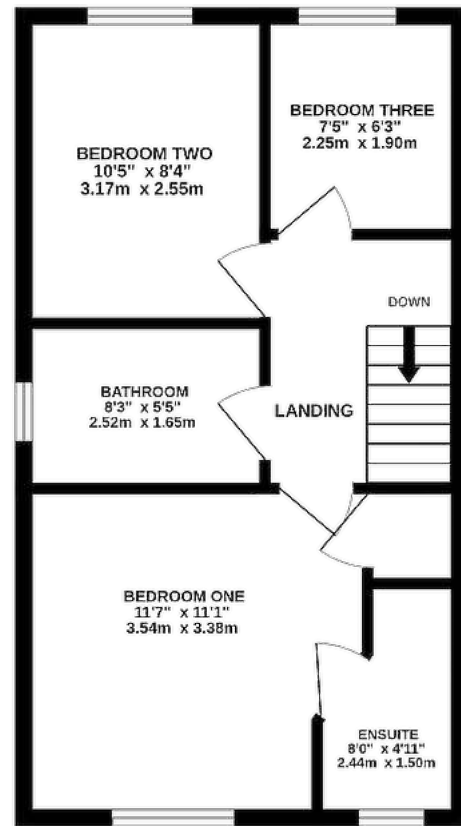




**GROUND FLOOR**  
401 sq.ft. (37.3 sq.m.) approx.



**1ST FLOOR**  
401 sq.ft. (37.3 sq.m.) approx.



TOTAL FLOOR AREA : 803 sq.ft. (74.6 sq.m.) approx.

**TENURE**

Freehold. Subject to verification by Vendor's Solicitor.

**SERVICES (NOT TESTED)**

We believe that mains water, electricity, central heating and drainage are connected.

**LOCAL AUTHORITY**

Cheshire West And Chester. Council Tax – Band C.

**POSSESSION**

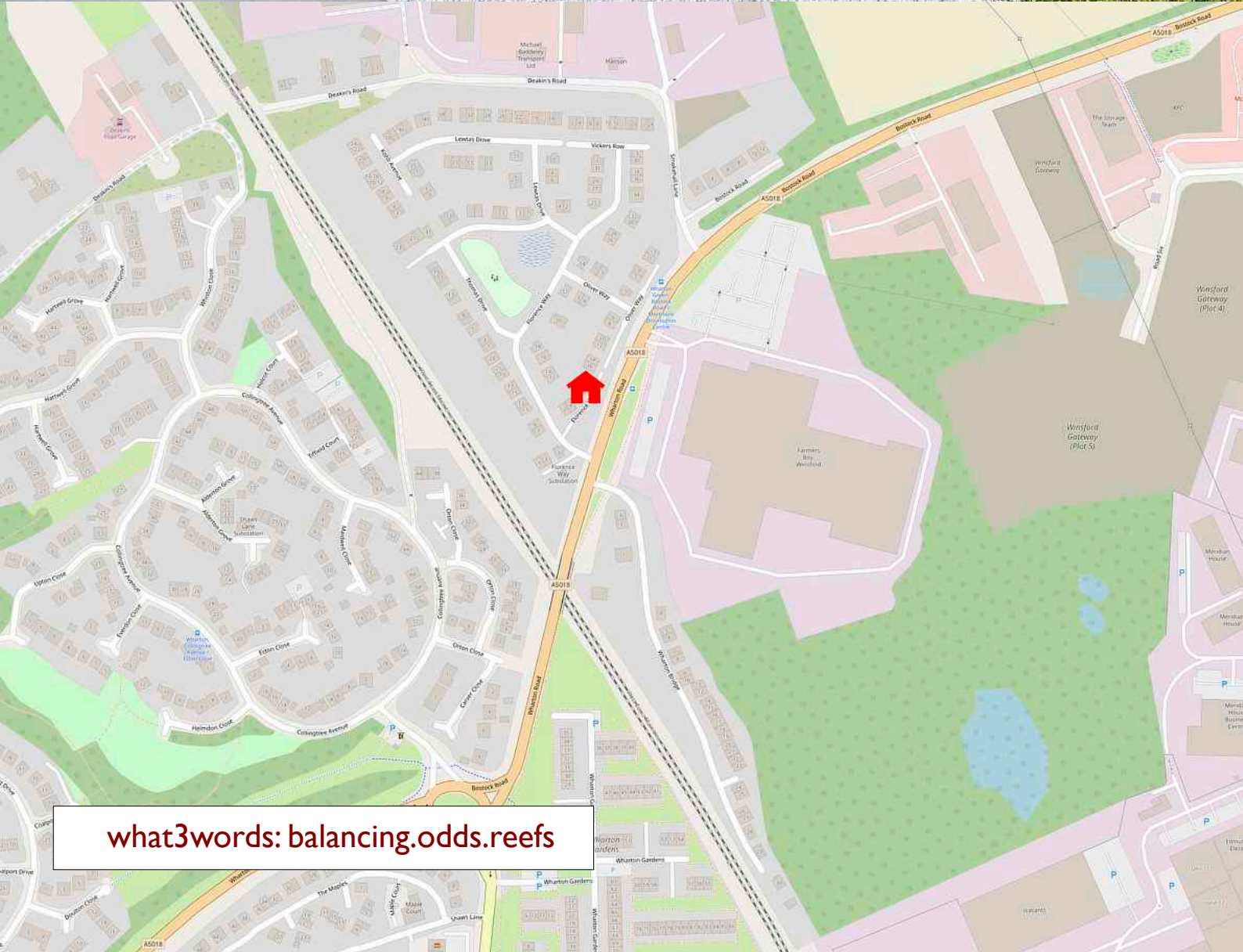
Vacant possession upon completion.

**VIEWING**

Viewing strictly by appointment through the Agents.

NOTICE: Hinchliffe Holmes for themselves and for the vendors or lessors of this property whose agents they are give notice that:

- (i) the particulars are set out as a general outline only for the guidance of intending purchasers or lessees, and do not constitute, nor constitute part of, an offer or contract;
- (ii) all descriptions, dimensions, references to condition and necessary permissions for use and occupation, and other details are given in good faith and are believed to be correct but any intending purchasers or tenants should not rely on them as statements or representations of fact but must satisfy themselves by inspection or otherwise as to the correctness of each of them;
- (iii) no person in the employment of Hinchliffe Holmes has any authority to make or give any representation or warranty whatever in relation to this property.
- (iv) Whilst every attempt has been made to ensure the accuracy of the floor plan contained here, measurements of doors, windows, rooms and any other items are approximate and no responsibility is taken for any error, omission, or mis-statement. This plan is for illustrative purposes only and should be used as such by any prospective purchaser. The services, systems and appliances shown have not been tested and no guarantee as to their operability or efficiency can be given.



what3words: balancing.odds.reefs



**HINCHLIFFE**  
HOLMES

Hinchliffe Holmes is an award winning independent family estate agency positioned in the heart of Cheshire with offices in Tarporley and Northwich.

The business was founded with a passion for providing properties that are accessible to clients at all stages of their working and family lives. Most importantly it provides an exciting

approach to the property market meeting the personal needs of our clients.

Hinchliffe Holmes specialises in the sale of town and country properties, shaping its reputation on a bespoke level of quality advice, superb local knowledge and exceptional customer service, along with maximum exposure of all properties through our wide advertising and marketing ability.

## EXCLUSIVE LISTINGS

An Exclusive Listing is a home sale that is not listed on the open market and therefore it is sold off-market using more private and discrete methods.

Your home is one of a kind, the process of selling should be unique to you and your needs. Not all home sellers follow the traditional route when putting their home on the market. For some, an Exclusive Listing, can be the right method to sell their home.

## LAND & NEW HOMES

The team at Hinchliffe Holmes offer experienced and professional advice for the purchase and sale of land, property development and the purchase of newly built and developed property.

## MORTGAGES

The Hinchliffe Holmes team is committed to providing the best possible service and advice. Our team of skilled and caring advisors will guide you through the mortgage application, removing the stress and simplifying the whole process.

## LETTINGS

With our bespoke and personal approach, Hinchliffe Holmes has a tailored range of services to suit your needs as a Landlord. Our expert team will showcase your property to thousands of potential tenants each month.

## PROPERTY MANAGEMENT


With various service options to choose from, you can decide which package suits your requirements, and as an independent agent we can tailor-make each service for each landlord.

more than  
**30,000**  
viewings arranged


**£600 MILLION**  
worth of property sold

on average  
**99.1%**  
of asking price  
achieved

**OVER 7,000 OFFERS**




UNITED KINGDOM  
**PROPERTY AWARDS**  
REAL ESTATE




**ROLLS-ROYCE**  
MOTOR CARS  
AUTHORISED DEALER  
P&A WOOD

★★★★★  
BEST ESTATE AGENCY  
SINGLE OFFICE CHESHIRE  
Hinchliffe Holmes

2021-2022




UNITED KINGDOM  
**PROPERTY AWARDS**  
REAL ESTATE




**ROLLS-ROYCE**  
MOTOR CARS  
AUTHORISED DEALER  
P&A WOOD

★★★★★  
BEST ESTATE AGENCY  
CHESHIRE  
Ben Hinchliffe

2022-2023



UNITED KINGDOM  
**PROPERTY AWARDS**  
REAL ESTATE



**ROLLS-ROYCE**  
MOTOR CARS  
AUTHORISED DEALER  
P&A WOOD

★★★★★  
BEST ESTATE AGENCY  
SINGLE OFFICE  
CHESHIRE  
Hinchliffe Holmes Ltd

2022-2023



UNITED KINGDOM  
**PROPERTY AWARDS**  
REAL ESTATE

★★★★★  
BEST ESTATE AGENCY  
SINGLE OFFICE  
CHESHIRE  
Hinchliffe Holmes

2023-2024



**The Negotiator**  
*Awards 2022*  
REGIONAL AGENCY  
OF THE YEAR  
NORTH EAST  
& NORTH WEST

**GOLD**



**BEST**  
ESTATE AGENT GUIDE  
AWARDS 2023  
**WINNER**  
LETTINGS

AWARDED FOR  
MARKETING | SERVICE | RESULTS





**HINCHLIFFE  
HOLMES**

**INDEPENDENT ESTATE AGENTS**

**SALES | LETTINGS | MORTGAGES  
LAND & NEW HOMES | PROPERTY MANAGEMENT**

**TARPORLEY OFFICE**

56B High Street, Tarporley, Cheshire, CW6 0AG

01829 730 021 - [tarporley@hinchliffeholmes.co.uk](mailto:tarporley@hinchliffeholmes.co.uk)

**NORTHWICH OFFICE**

28 High Street, Northwich, Cheshire, CW9 5BJ

01606 330 303 - [northwich@hinchliffeholmes.co.uk](mailto:northwich@hinchliffeholmes.co.uk)

[www.hinchliffeholmes.co.uk](http://www.hinchliffeholmes.co.uk)