



Cannon Hill Lane, SW20

£650,000

Dexters



Cannon Hill Lane, SW20

A stunning three double bedroom, extended, ground floor maisonette. The property is finished to an incredible standard, with a private garden and measuring over 1,050 square feet.

The property has been taken back to brick, renovated and extended to an exceptional standard. From the refurbished parquet flooring throughout the property, to the modern bathroom, clever storage and the sliding doors to the garden, every inch of this property has been meticulously planned and attended to.

The property has been extended to the rear, to now offer a large, light, open and desirable dining/ reception room, with twin sliding doors on both sides, to a courtyard garden and private grass garden to the rear.

The property is equidistant to both Wimbledon Chase and South Merton train stations. With the famous National Trust Morden Hall Park, Cannon Hill Common, and Wimbledon town centre just a short distance away.

Features

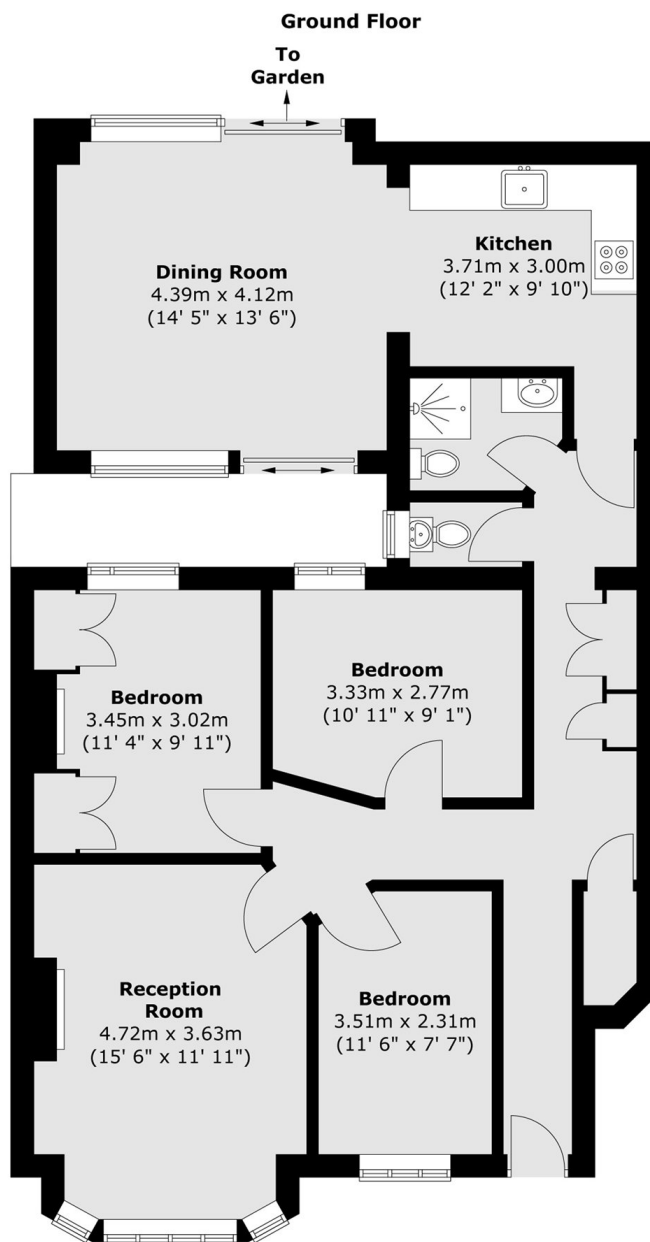
- Three Double Bedrooms
- Ground Floor Maisonette
- Private Rear Garden
- Exceptional Finish
- Close To The Station
- Outstanding Schools Nearby







Cannon Hill Lane, London, SW20



Total area (approx.) : 97.9 sq. m (1054 sq. ft)