

BUTLER & STAG



Bow River Village, Bow, E3
London

Guide Price £625,000 - £650,000



21 Bolinder Way

London

Set across three levels and offering an impressive 1,593 sq ft of internal living space, this beautifully presented four-bedroom, two-bathroom maisonette is located within the sought-after Bow River Village development in Bow, E3.

- 1593 Sq/Ft Internal Living Space
- Spread Across Three Levels (Maisonette)
- Four Bedrooms
- Two Bathrooms
- Waterside Development
- Chain Free
- Olympic Park and Westfield Shopping Centre Close By
- Bromley By Bow Tube Station A Moments Walk Away



Set across three levels and offering an impressive 1,593 sq ft of internal living space, this beautifully presented four-bedroom, two-bathroom maisonette is located within the sought-after Bow River Village development in Bow, E3.

Finished to a modern standard throughout, the property provides a spacious and versatile accommodation ideal for families and professionals alike. The ground floor features a generous contemporary fitted kitchen/diner. Large windows allow for an abundance of natural light, creating a bright and welcoming atmosphere.

The upper floors comprise a generous reception room with ample space for both living and dining, four well-proportioned bedrooms, including a principal bedroom with en-suite facilities, together with a further modern bathroom. Thoughtfully arranged across three levels, the layout offers excellent flexibility for growing families, home working, or guest accommodation.

Externally, the property benefits from a private front garden and a balcony, providing valuable outdoor space for relaxing and entertaining.

Bow River Village is a popular residential development ideally positioned for excellent transport links, with Bromley-by-Bow Underground Station within easy reach, offering convenient access to Canary Wharf, Stratford, the City and beyond. A range of local amenities, riverside walks, parks, and shopping facilities are also close by.

An exceptional opportunity to acquire a substantial family home in a well-connected East London location.

Council Tax band: F

Tenure: Leasehold

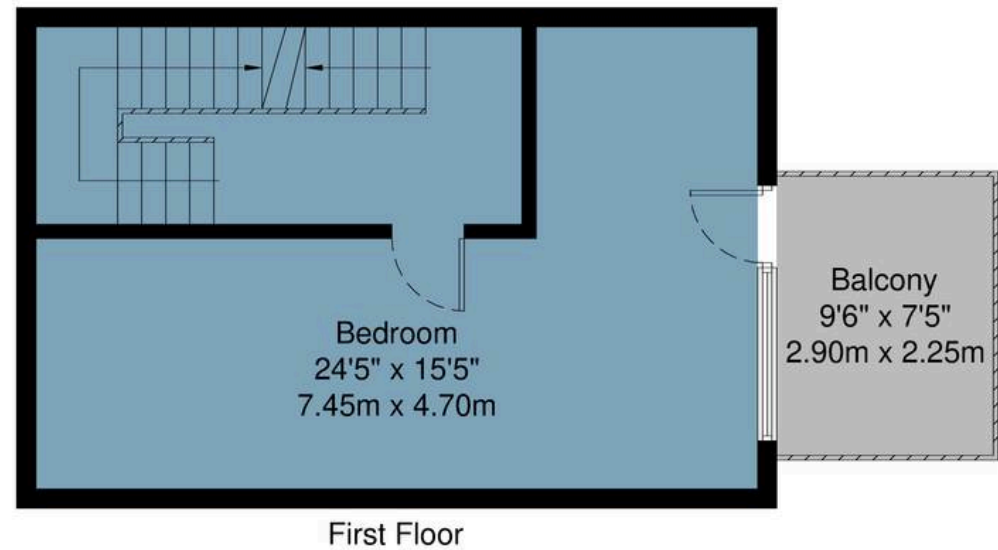
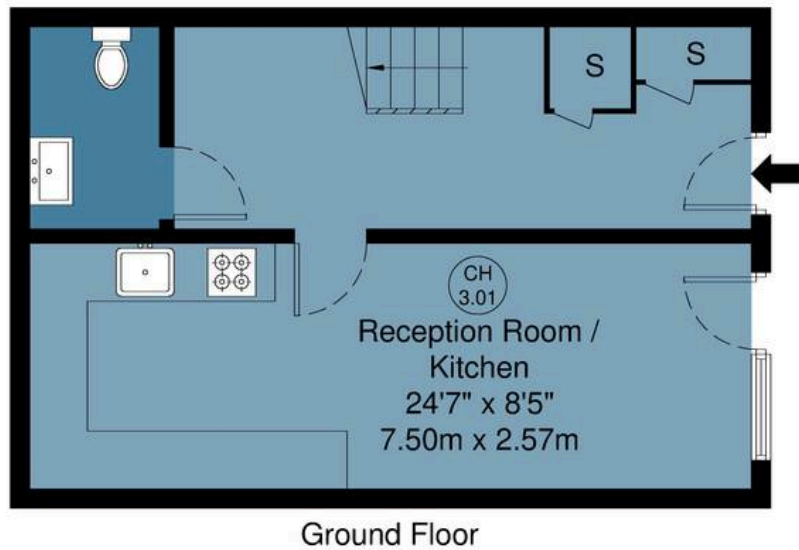
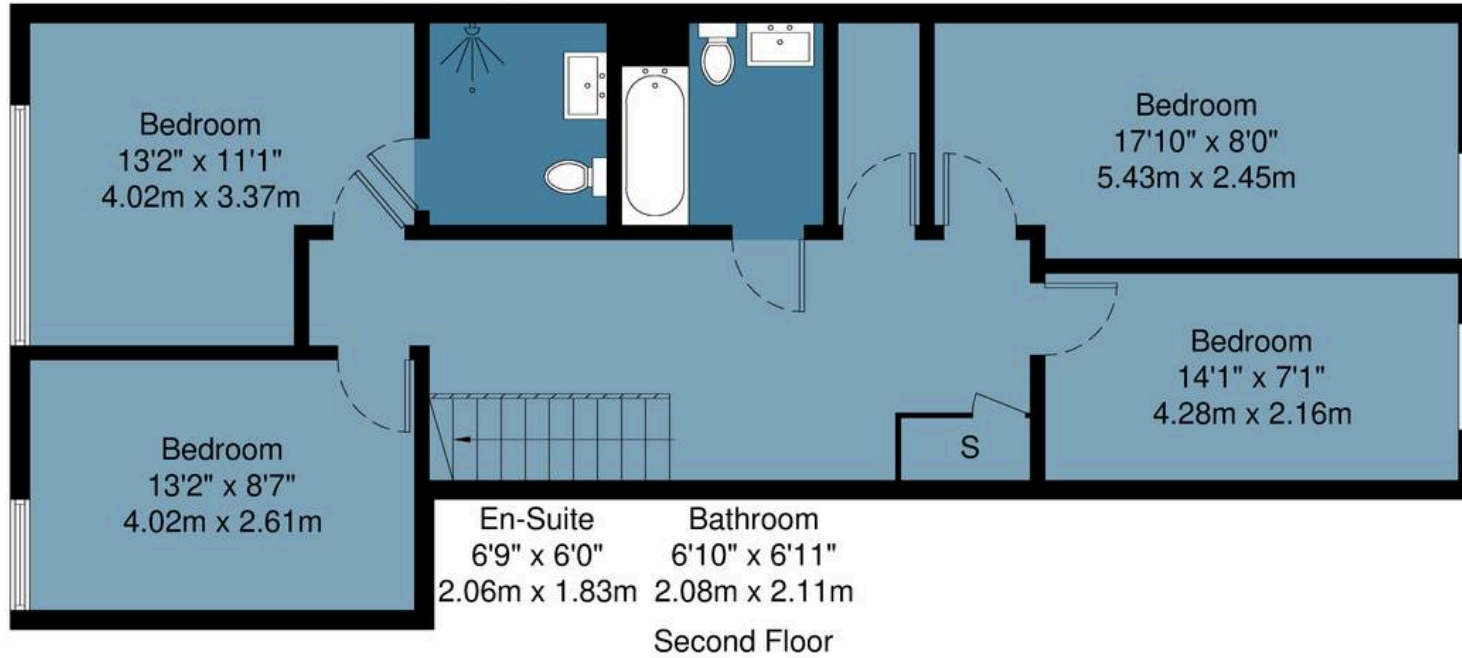






Bolinder Way, E3

Approx Gross Internal Area : 147.9 sq m / 1591 sq ft



Measurements are approximate and for illustration purposes only. While we do not doubt the accuracy and completeness, we advise you conduct a careful independent assessment of the property to determine monetary value.

FROM EAST LONDON ENERGY TO WEST ESSEX EASE

We Make Moving Home Easy.

At Butler and Stag, we do more than just connect London to West Essex – we make the move seamless. With offices spanning from vibrant East London to the tranquillity of West Essex, we understand the nuances of each area and the journey people take between them. Our marketing goes beyond standard listings, showcasing every property with precision, creativity, and reach that others simply can't match. Coupled with an unparalleled attention to detail, from first enquiry to final move-in, we ensure every client and customer feels informed, supported, and confident. Simply put, we do the little things that make a big difference, setting us apart in every step of the property experience.



LONDON STRATFORD SOUTH WOODFORD BUCKHURST HILL LOUGHTON EPPING BEYOND

Like what you see? Let's talk

Book your **FREE** valuation now



020 8102 1236

london@butlerandstag.com

508 Roman Road, Bow, London, E3 5LU

butlerandstag.uk

IMPORTANT NOTICE - These particulars have been prepared in good faith and they are not intended to constitute part of an offer or contract. We have not performed a structural survey on this property and the services, appliances and specific fittings have not been tested. All photographs, measurements, floor plans and distances referred to are given as a guide and should not be relied upon.

BUTLER & STAG

