



## Europa House

Randolph Avenue, W9

£30,030 per month  
(£6,930 per week)

Stunning four bed penthouse situated on the top floor and offering stunning views of the beautifully manicured communal garden.

**CHESTERTONS**



# Europa House

Randolph Avenue, W9

- Air Conditioned
- All Bills Included
- 24 hour Concierge
- Underground Parking
- Housekeeping service

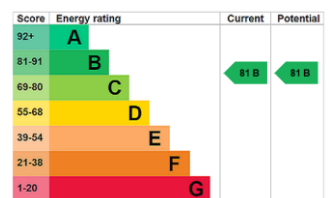


A generous lateral apartment with excellent natural light, set within a terrace of elegant stucco-fronted houses moments from Maida Vale station.

Positioned on the fourth floor, the entrance hall opens into an impressive reception space spanning the full width of the property. The layout incorporates a sleek open-plan kitchen with a central island, alongside clearly defined dining and living areas. Three French doors open onto two separate terraces, creating a dual aspect and drawing in abundant southerly light throughout the day.

The accommodation comprises five bedrooms. Two benefit from

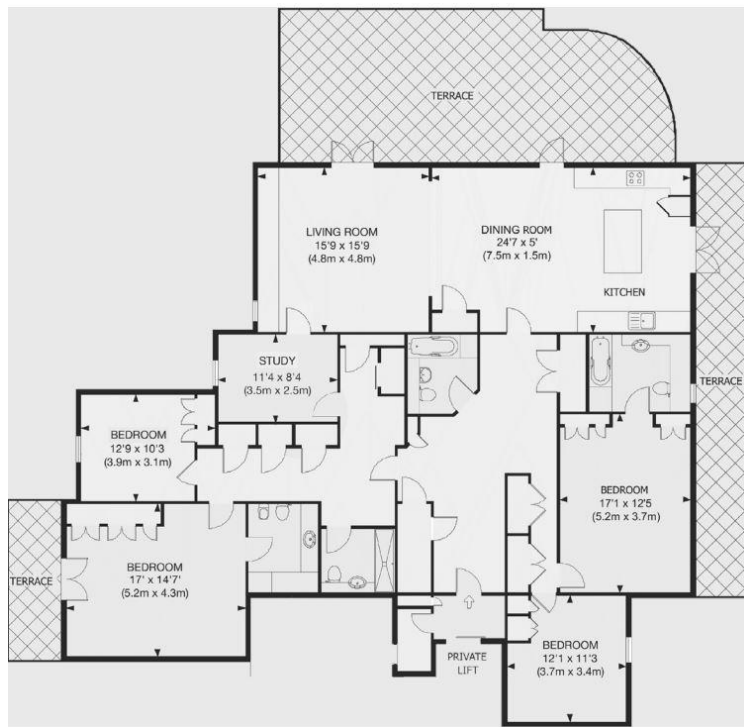
**Minimum Term:** 3 months  
**Deposit Required:** 6 weeks  
**Local Authority:** Westminster  
**Council Tax Band:** G  
**EPC Rating:** B  
**Furnished**



### *Chestertons Little Venice Lettings*

26 Clifton Road  
Maida Vale  
London  
W9 1SX  
littlevenicelettingsusers@chestertons.co.uk  
02072662369  
chestertons.co.uk

Additional tenant charges apply (fees apply to non-AST tenancies only)  
Tenancy Agreement Fee: £300  
References per Tenant/Guarantor: £60  
Inventory check (approx. £100 – £250 inc. VAT)  
chestertons.co.uk/property-to-rent/applicable-fees



**FOUR BEDROOM PENTHOUSE**

**FOURTH FLOOR**

**2,320 SQ FT / 215.5 SQ M**

Please note that this is a sample floor plan and actual room layout may vary

