

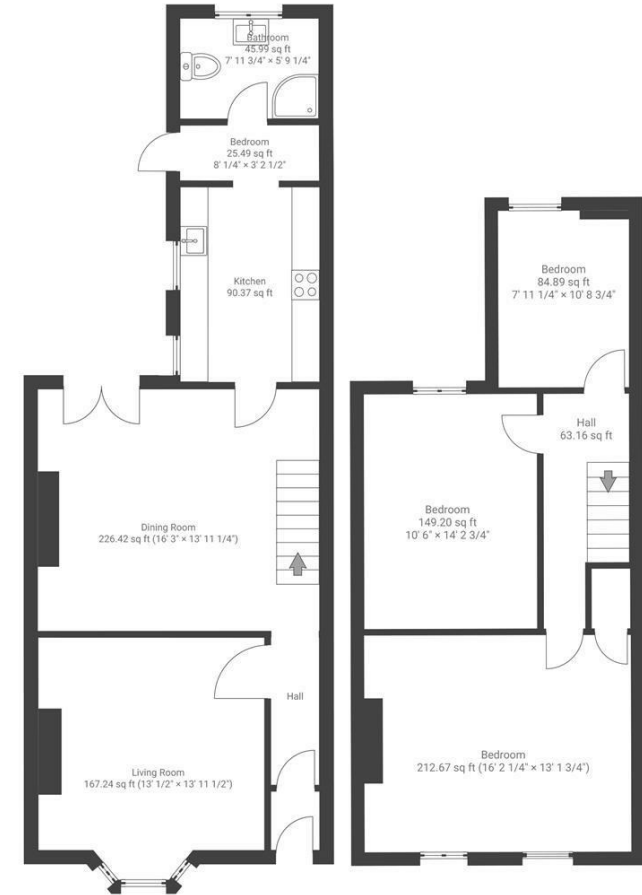
Boardwalk

Hill Street

TOTTERDOWN, BRISTOL

Hill Street TOTTERDOWN

APPROXIMATE FLOOR AREA
106SQM / 1145SQFT



Boardwalk

Hill Street

TOTTERDOWN, BRISTOL



£450,000



3 Bedrooms



BS3 4TW



1 Bathrooms

"We have loved living in our colourful house on the hill and will really miss our lovely neighbours here. Totterdown has such a vibrant community with so many great local places; Sundial Cafe, Victoria Park on the doorstep and great local pubs. We fell in love with the spacious rooms and have renovated and restored features over our time here. We have so many happy memories, from watching hot air balloons drift over the garden on summer days to cosying up with the log burner in winter."

