



Corringham Court, Hampstead Garden Suburb, NW11
Offers Over £500,000

moreland 



moreland



Exclusive listing on this beautifully presented two bedroom apartment situated on the ground floor of this popular purpose built block of only 31 apartments.

Comprising communal Entrance to apartment, large hallway with Guest cloakroom, reception room, modern fitted kitchen with appliances, spacious principal bedroom and large single bedroom and shower room.

Outside, there are extensive communal gardens at the rear of the block and parking to the front. Vehicle and pedestrian access is gained via a driveway accessed off Corringham Road.

Conveniently located within walking distance of Golders Green tube station and the mini and varied shopping facilities on Golders Green Road, including cafés, coffee shops and restaurants, regular bus/coach routes into and out of central London and major airports.

Also minutes walk from the Heath extension.



Size - 73.5 sq m / 791 sq ft



2 Bedroom

Tenure -Leasehold



1 Bathroom

Council - Barnet



1 Reception

Tax Band - E



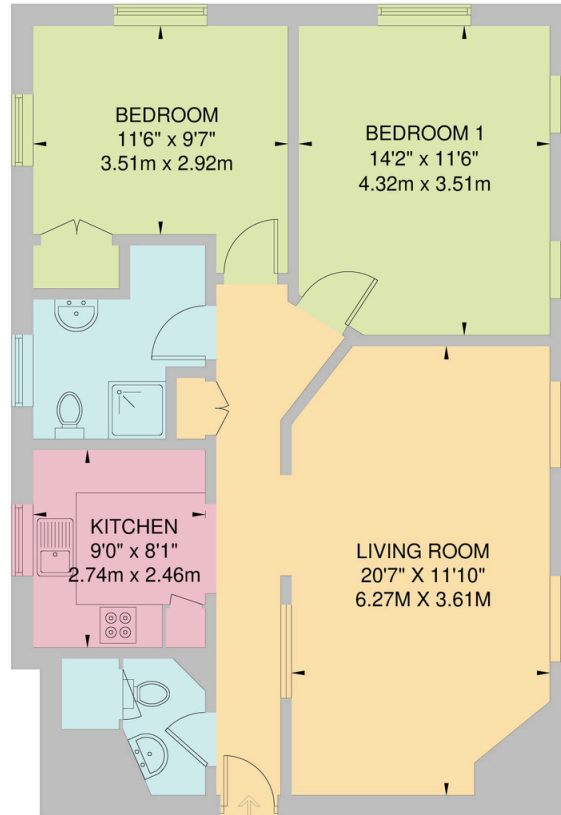
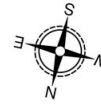
Communal





Corringham Road, London, NW11

Approximate Gross Internal Area
73.5 sq m / 791 sq ft



IN
SECOND FLOOR
73.5 sq m / 791 sq ft



At Moreland, our mission is to deliver a trusted, professional, and personalised property service by combining deep local expertise with clear communication and a genuine commitment to our clients' best interests.

We strive to make every property journey smooth, transparent, and successful, building long-term relationships through integrity, knowledge, and exceptional customer care.

020 8381 4970

info@morelandestateagents.co.uk

Moreland Estates Ltd is a company registered in England and Wales with company number 03663497

Trading Address is: 903 - 905 Finchley Road, Golders Green, London, NW11 7PE

VAT Registration Number: GB 701 775 936

Registered Office is: Unit 8 Alpha Business Park, Travellers Close, Welham Green, Hertfordshire, AL9 7NT

