



Rhydhelig Avenue,  
Heath, Cardiff,  
CF14 4DA



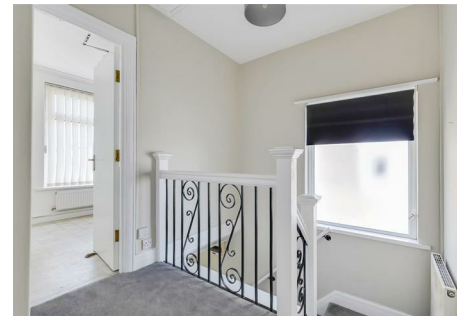
PCM  
£1,000 PCM

2 Bedrooms  
Apartment

A newly upgraded two double bedroom apartment on the first floor of this converted semi detached house within a short walk of UHW, the village of Birchgrove and Heath Park. The property benefits from a new kitchen, decoration and new flooring throughout. Unfurnished with kitchen appliances. Off road parking to side driveway. Gas central heating. Council Tax band D. EPC rating D. Available June 2026 for a minimum twelve month term.

## Features

- Upgraded First Floor Apartment within Converted Semi Detached House
- Two Double Bedrooms/Traditional Bay Fronted Lounge
- Brand New Kitchen/Decorated and New Flooring Throughout
- Unfurnished with Kitchen Appliances
- Super Location for UHW/Birchgrove Village and Heath Park
- Off Road Parking to Side Driveway
- Gas Central Heating
- Council Tax Band D/EPC Rating D



## Information

- Tenure:
- Council Tax Band: D
- Floor Area: 662.90 sq ft
- Current EPC Rating: D
- Potential EPC Rating: C



2 BEDROOMS



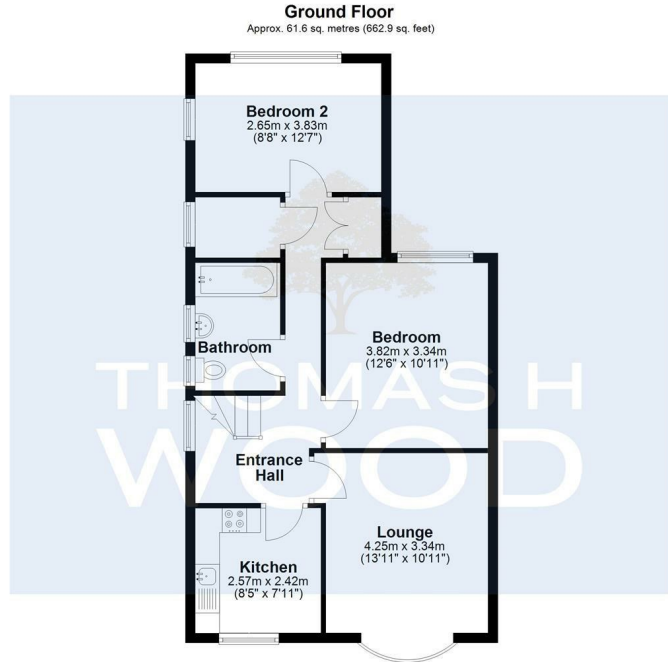
1 BATHROOMS



1 RECEPTION ROOMS



ENERGY RATING: D



Total area: approx. 61.6 sq. metres (662.9 sq. feet)



Agents Note: Whilst every care has been taken to prepare these sales particulars, they are for guidance purposes only. All measurements are approximate and are for general guidance purposes only and whilst every care has been taken to ensure their accuracy, they should not be relied upon and potential buyers are advised to recheck the measurements

Energy Efficiency Rating		Current	Potential
Vary energy efficient - lower running costs			
(92 plus) <b>A</b>			
(81-91) <b>B</b>			
(69-80) <b>C</b>			
(55-68) <b>D</b>		68	75
(39-54) <b>E</b>			
(21-38) <b>F</b>			
(1-20) <b>G</b>			
Not energy efficient - higher running costs			
England & Wales		EU Directive 2002/91/EC	



**CONTACT**

[sales@thomashwood.com](mailto:sales@thomashwood.com)  
02920 626 252  
[thomashwood.com](http://thomashwood.com)

**WHITCHURCH BRANCH**

14 Park Road,  
Whitchurch  
CF14 7BQ

**RADYR BRANCH**

5 Station Road,  
Radyr, Cardiff  
CF15 8AA