



Hilary Mews, SE1

£1,895,000

A highly attractive and stylishly presented, freehold townhouse, spread over almost 2,000 sq ft and five storeys, with a large living room, a separate kitchen and balcony, three double bedrooms, two bathrooms, an additional study room and a spectacular west-facing roof terrace, with far reaching skyline views.

Hilary Mews is incredibly well located in the heart of SE1, moments from Borough and London Bridge Stations, Borough Market and the South Bank, with numerous amenities and attractions on your door step.

Features

- Freehold Townhouse
- Large Roof Terrace & Balcony
- Three Double Bedrooms
- Two Bathrooms
- Two Additional WCs
- Air Conditioning
- 24 Hr Concierge & Secure Entry
- Chain Free Sale



Hilary Mews, SE1

The living room occupies the ground floor, with large floor to ceiling windows, allowing ample natural light. Behind this is the utility room with extensive built-in storage and the first of two WCs.

On the first floor is a very generous kitchen-diner, with a high spec, fully fitted kitchen, a large island with built in breakfast bar, and space for a six or even eight seat dining table, as well as a full width balcony, accessed via bi-fold doors. Additional there is the second WC.

The master bedroom boasts a large en-suite bathroom, decorative panelling and a luxurious walk-in wardrobe. The second and third bedrooms are also generous doubles with built-in wardrobes and are served by a three piece family bathroom.

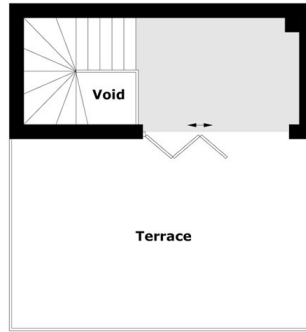
On the top floor is the private, west-facing roof terrace, taking in the best of the skyline views, including the London Eye and back towards the Shard. There is also a fantastic study space/day room benefitting from the same views and bi-fold doors onto the terrace.

The house has been finished to a very high standard with high quality integrated appliances, under floor heating, air-conditioning and attractive contemporary design. There is a fantastic sense of space from top to bottom, from the living room, kitchen and up to the roof terrace.

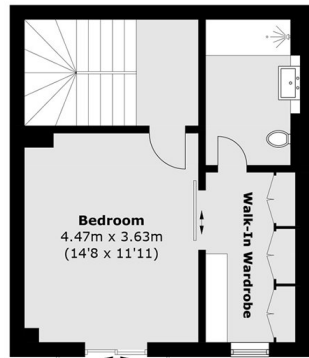
Brandon House is one of SE1's premier gated developments, with a very exclusive feel and a high quality finish. Benefits include a 24 hour concierge, cycle storage, secure entry and lift access.



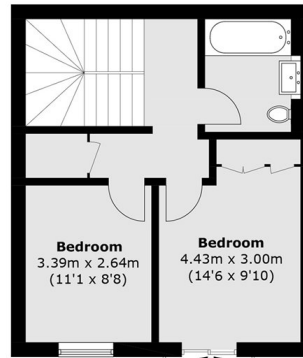
Hilary Mews, London, SE1



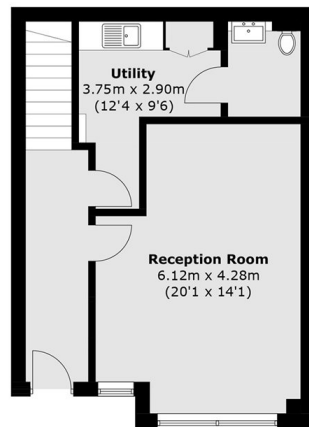
Fourth Floor



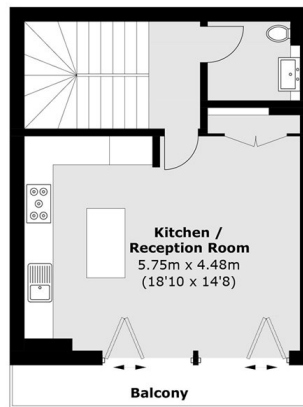
Second Floor



Third Floor



Ground Floor



First Floor

Total area (approx.): 175.0 sq. m (1883.8 sq. ft)
(Excluding Void)

Balcony & Terrace: 30.0 sq. m (322.9 sq. ft)