



Anerley Road, SE20 | £575,000

020 8702 9333

crystalpalace@pedderproperty.com

pedder
We live local



In General

- 1382 sq ft / 128.4 sq m
- No onward chain
- Convenient location
- Three bedrooms
- Large communal garden
- Fresh, neutral decor
- Attractive Victorian building

In Detail

A very generously proportioned three bedroom period conversion forming part of an attractive Victorian building which is well placed for transport links and amenities.

This spacious property extends to 1382 sq ft / 128.4 sq m and comprises the entire first floor, boasting light, bright and freshly decorated accommodation which is ready for a new owner to put their own stamp on. The reception room is 21ft and includes a sunny sash bay window and a feature fireplace, whilst all bedrooms are of a double proportion. A separate shower room compliments the main bathroom and is ideal for busy households. Further benefits include a large communal rear garden, a share of the freehold, and residents off street parking.

This location works well for multiple transport links including Anerley, Elmers End, and Penge East and West rail stations. Also, Crystal Palace Park and various walkable amenities.

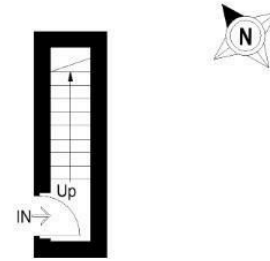
EPC: D | Council Tax Band: D | Lease: 100 years remaining | SC: £1,680pa | GR: £100pa | BI: TBC



Floorplan

Anerley Road, SE20

Approximate Gross Internal Area
128.4 sq m / 1382 sq ft



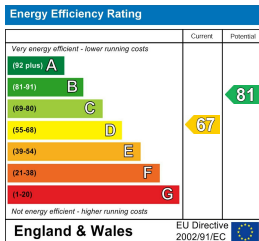
Ground Floor



First Floor

Copyright www.pedderproperty.com © 2025

These plans are for representation purposes only as defined by RICS - Code of Measuring Practice. Not drawn to Scale. Windows and door openings are approximate. Please check all dimensions, shapes and compass bearings before making any decisions reliant upon them.



Pedder Property Ltd trading as Pedder for themselves and for the vendor/landlord of this property whose agents they are, give notice that (1) these particulars do not constitute any part of an offer or contract, (2) all statements contained within these particulars are made without responsibility on the part of Pedder or the vendor/landlord, (3) whilst made in good faith, none of the statements contained within these particulars are to be relied upon as a statement of representation or fact, (4) any intending purchaser/tenant must satisfy him/herself by inspection or otherwise as to the correctness of each of the statements contained within these particulars, (5) the vendor/landlord does not make or give either Pedder or any person in their employment any authority to make or give representation or warranty whatsoever in relation to this property.