

Flat 30, 6, Sharp House Heather Close, London, SW8 3BT

£350,000

Council Tax Band: B



ORLANDO REID



Located in a small attractive block, this three-bedroom flat of over 662 sq.ft is ideally located a short walk from Clapham Common and the Old Town. This superb flat has an attractive private balcony and offers a flexible open plan design.

This lovely three-bedroom third floor flat offers plenty of natural light, a delightful open plan living room/kitchen and a large private balcony. The flat has been well maintained and consists of two well-proportioned double bedrooms and a third smaller bedroom/study. An ideal first time purchase or a superb investment opportunity.

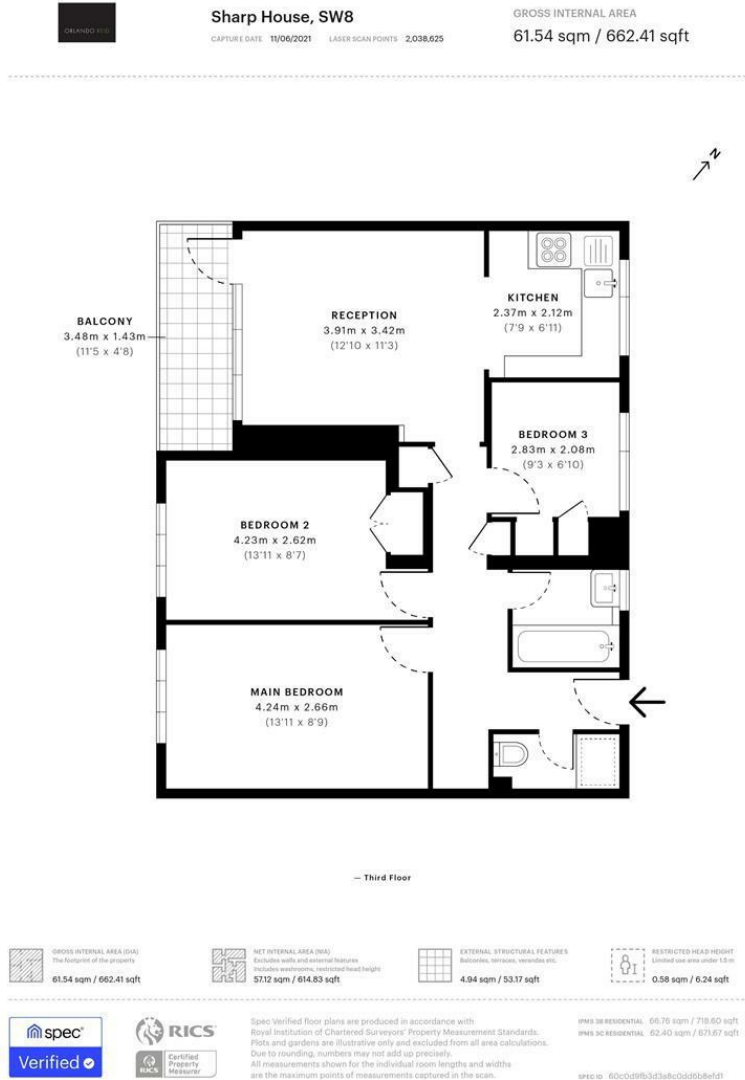


St Johns Court 19b Quay Street, Manchester, M3 3HN

01616760099

manchester@orlandoreid.co.uk

<https://www.orlandoreid.co.uk/manchester/>



Energy Efficiency Rating		Current	Potential
Very energy efficient - lower running costs			
(92 plus) A			
(81-91) B			
(69-80) C		75	
(55-68) D			
(39-54) E			
(21-38) F			
(1-20) G			
Not energy efficient - higher running costs			
England & Wales		EU Directive 2002/91/EC	