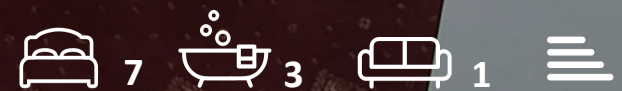




Flat A Bourne Court, Bourne Avenue
, Bournemouth, BH2 6DT

£775 Per month

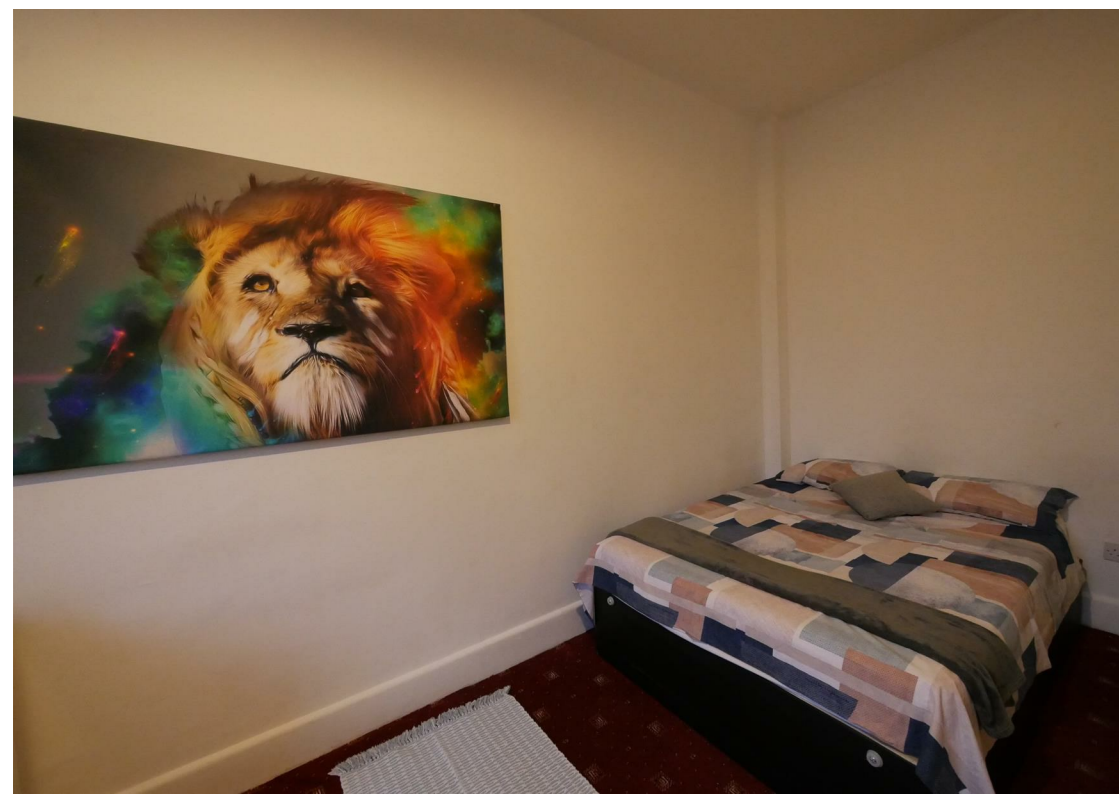
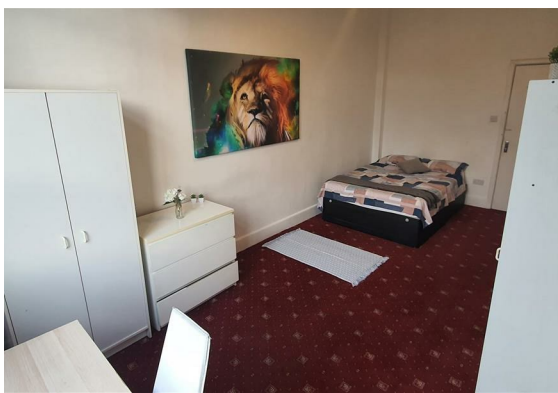
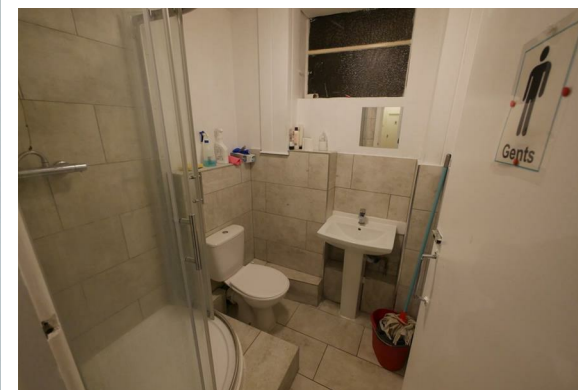


Flat A Bourne Court, Bourne

, Bournemouth, BH2 6DT

We are pleased to offer this large double room to let close Bournemouth town centre. The property is located within a short walking distance from the beach, local shop, and public transport. The room comes fully furnished and all bills are included in the monthly rent. There is complimentary Wifi at the property. Shared kitchen and laundry facilities are available at the property. It is suitable for students or full-time workers. Please give us a call to arrange a viewing.

EPC Rate: E





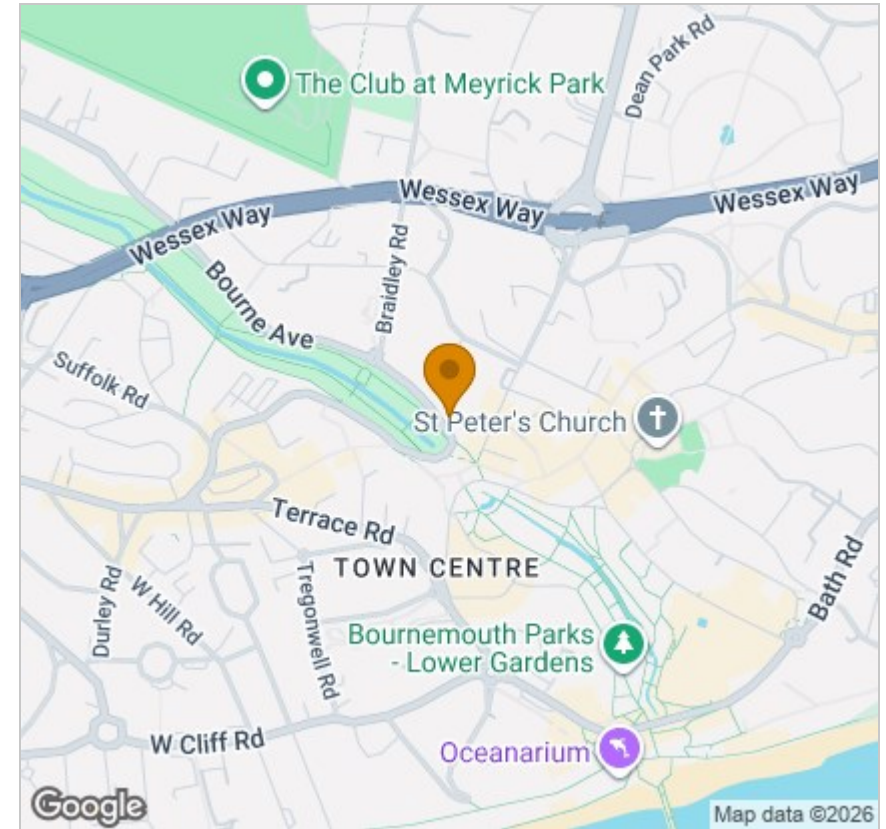
Floor Plan



Viewing

Please contact our HMO's Office on
if you wish to arrange a viewing appointment for this property or require further information.

Area Map



Energy Efficiency Graph



These particulars, whilst believed to be accurate are set out as a general outline only for guidance and do not constitute any part of an offer or contract. Intending purchasers should not rely on them as statements of representation of fact, but must satisfy themselves by inspection or otherwise as to their accuracy. No person in this firm's employment has the authority to make or give any representation or warranty in respect of the property.