



14 Ramsbury Drive
Hungerford, Berkshire, RG17 0SG



A two bedroom ground floor apartment with a lease of 970 years and with private access to the communal garden and parking.

114 High Street, Hungerford, Berkshire RG17 0LU

Telephone: 01488 683334

Email: sales@nyeandco.co.uk

www.nyeandco.co.uk

Entrance hall with two storage cupboards | Kitchen | Living room with private door onto communal grounds
Master bedroom with fitted wardrobes | Second bedroom | Bathroom with shower over bath | Double glazing
Electric heating | Communal grounds | Parking for two cars | No onward chain

Guide Price £225,000

SITUATION

The property is conveniently situated a short walk from Hungerford High Street and railway station, close to Portdown Common. Hungerford offers a range of local shops including butchers, bakers, post office, newsagent, chemist, and supermarket. The town is renowned as a centre for antiques. There is a primary school and secondary schooling. The mainline railway station has trains to London (Paddington). Junction 14 of the M4 is some three miles north of the town.

DESCRIPTION

A well presented two bedroom ground floor apartment with a long lease of 970 years. Accommodation comprises entrance hall with two large storage cupboards, kitchen and living room with a private door opening onto the communal grounds with a path leading

to parking for the flat. There is a master bedroom with fitted wardrobes, second bedroom and bathroom with shower over bath. The property has new double glazing and electric heating.

Outside there are communal grounds and communal bin store. Parking is provided by two spaces in the main car park.

The property is being sold with no onward chain and viewing is strongly recommended.

Lease length – 970 years remaining.
Ground rent – £0 per annum
Service charge - £1,846.06 for year 2026/2027

COUNCIL TAX

Band C – West Berkshire

Score	Energy rating	Current	Potential
92+	A		
81-91	B		
69-80	C		
55-68	D	58 D	67 D
39-54	E		
21-38	F		
1-20	G		



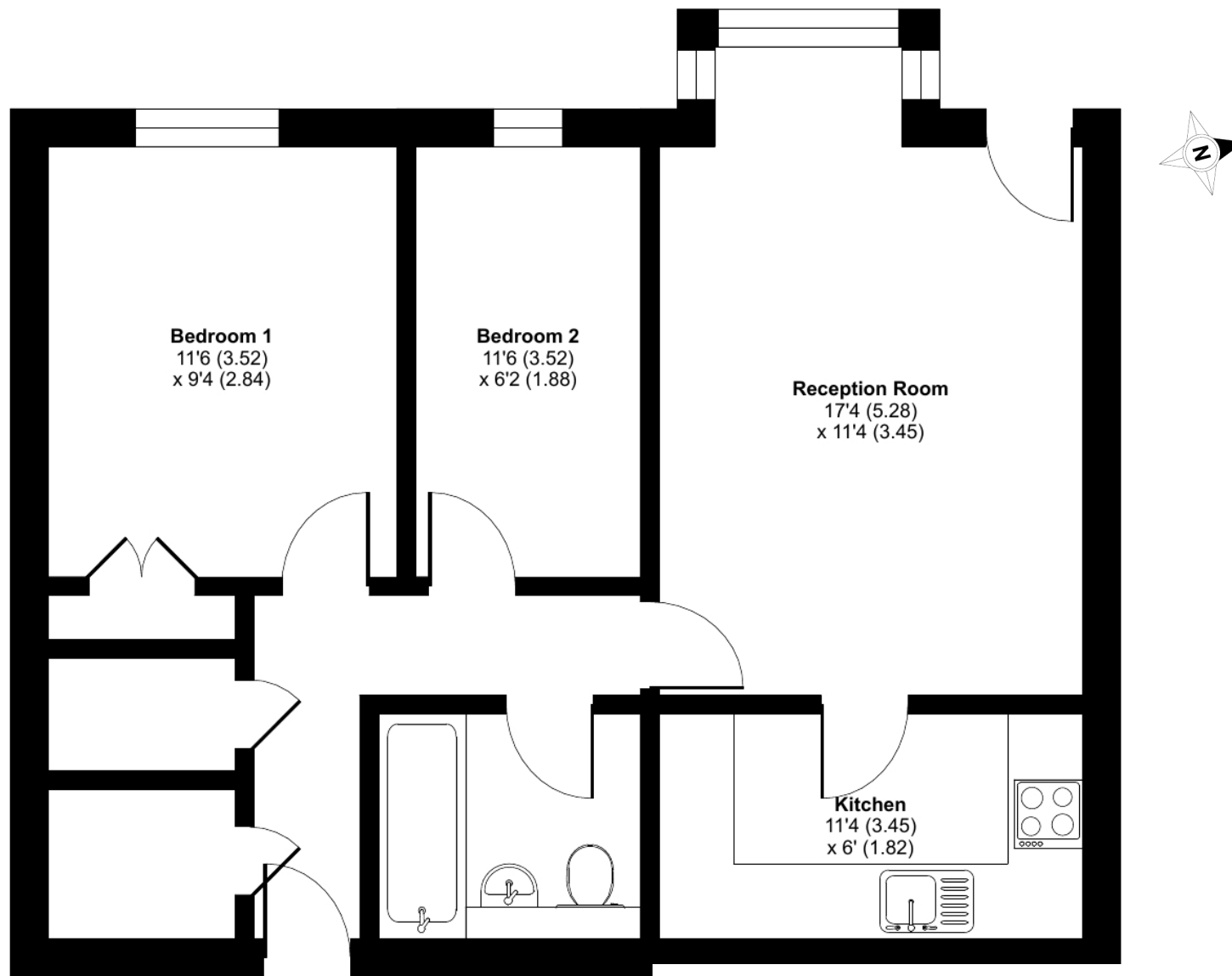
114 High Street, Hungerford, Berkshire RG17 0LU

Telephone: 01488 683334

Email: sales@nyeandco.co.uk

www.nyeandco.co.uk





GROUND FLOOR

 Floor plan produced in accordance with RICS Property Measurement 2nd Edition, incorporating International Property Measurement Standards (IPMS2 Residential). © nchecon 2026. Produced for Nye & Co Hungerford Ltd. REF: 1416463

114 High Street, Hungerford, Berkshire RG17 0LU

Telephone: 01488 683334

Email: sales@nyeandco.co.uk

www.nyeandco.co.uk

