



# BEAUFORT GREEN

# Waterford Road, SW6

£2,000,000

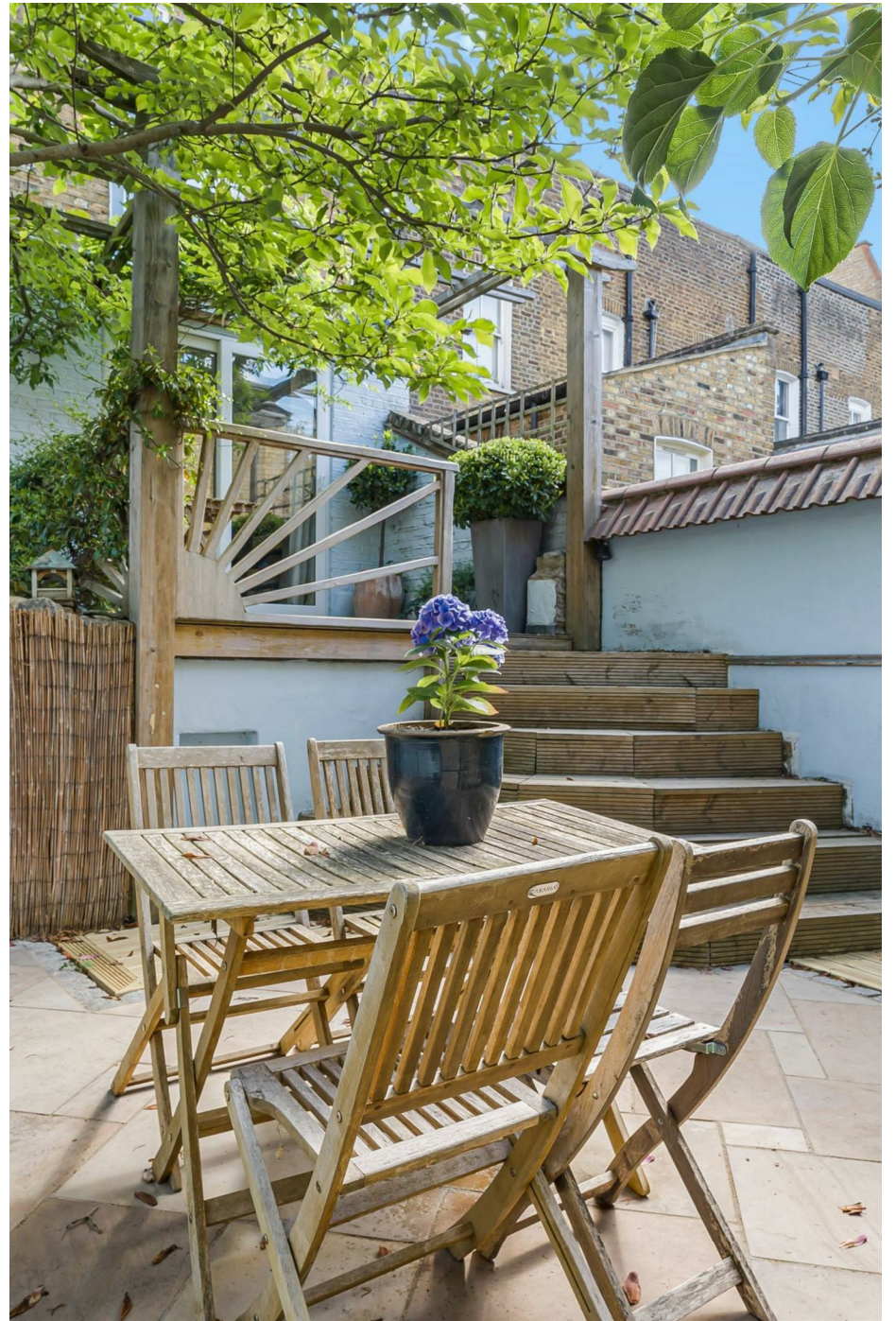


This elegant home combines period charm with contemporary interiors, featuring high ceilings, wooden flooring and excellent natural light throughout. The raised ground floor offers a stunning double reception room and separate study area, while the lower ground floor has been transformed into a superb open-plan kitchen and dining space with direct access to a private landscaped garden and terrace.

The principal bedroom suite occupies the top floor with a luxurious en suite bathroom and private roof terrace, complemented by three further double bedrooms and stylish family bathrooms.

Waterford Road is a quiet residential street conveniently located close to the cafés, restaurants and boutiques of New Kings Road and Fulham Road, with Parsons Green and Fulham Broadway stations both within easy reach.

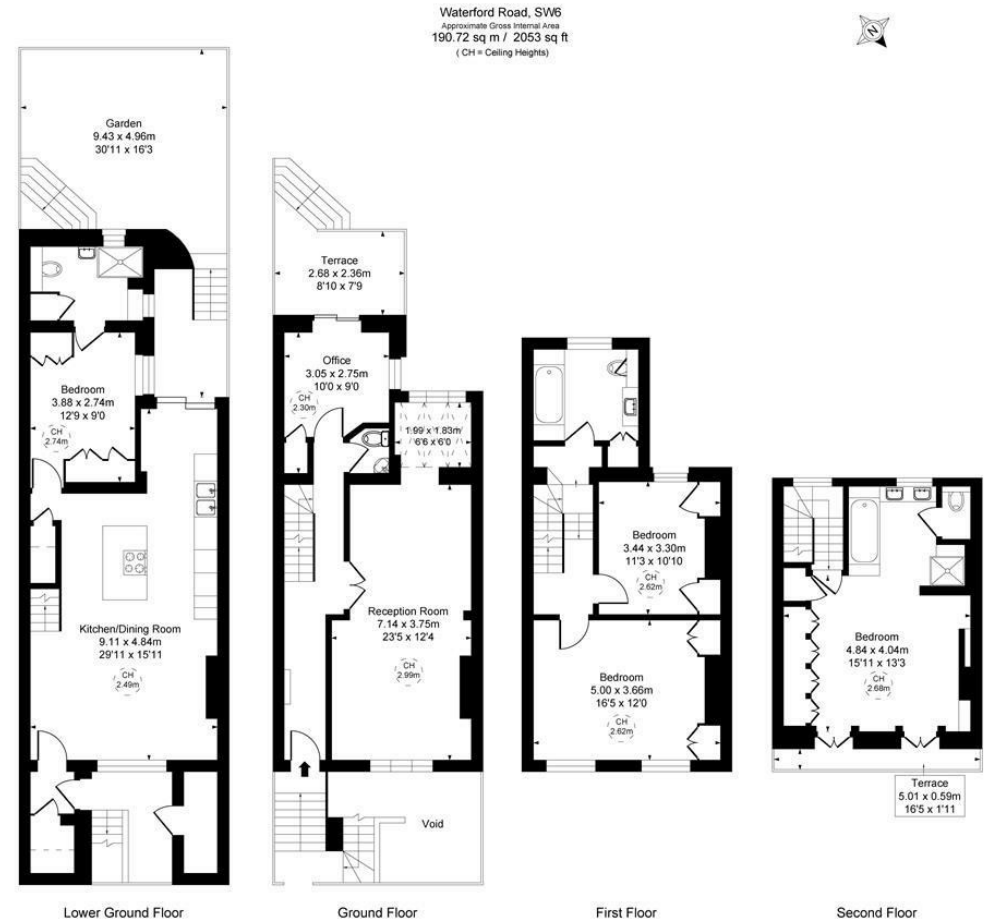




# BEAUFORT GREEN



# BEAUFORT GREEN



## At a Glance.

- Four-bedroom Victorian townhouse
- Over 2,000 sq ft
- Double reception room
- Open-plan kitchen/dining room
- Private garden and roof terrace
- Prime Fulham location

This plan is not to scale. It is for guidance and not for valuation purposes.  
All measurements and areas are approximate only, and have been prepared in accordance with the current edition of the RICS Code of Measuring Practice.

# BEAUFORT GREEN

02074594100

[charlie@beaufortgreen.co.uk](mailto:charlie@beaufortgreen.co.uk)

---

263 New Kings Road  
London  
SW16 1DB