



King Charles Crescent, KT5

£700,000

Dexters



King Charles Crescent, KT5

A beautiful, exposed brick, Victorian cottage immaculately presented throughout with plenty of original features and a wonderful open plan, rear extended kitchen/diner.

On the ground floor this property offers a traditional front reception room with period fireplace and modern shutters, to the rear is a large open plan kitchen/dining area with integrated appliances, an island and doors leading out to the lovely secluded rear garden. There is also a downstairs WC and a utility cupboard.

Upstairs there are two lovely bedrooms, the master spans the width of the house and there is also a four piece bathroom suite.

To the front of this property there are black and white Victorian tiles leading up to the front door and to the rear is a peaceful, private garden, it is also situated moments from the picturesque Fish Ponds Park.

King Charles Crescent is just over half a mile away from Surbiton town centre, offering the mainline train station (with links to Waterloo in 15 minute's) and a variety of shops, bars and restaurants as well as the charming farmers market and the river Thames.

Features

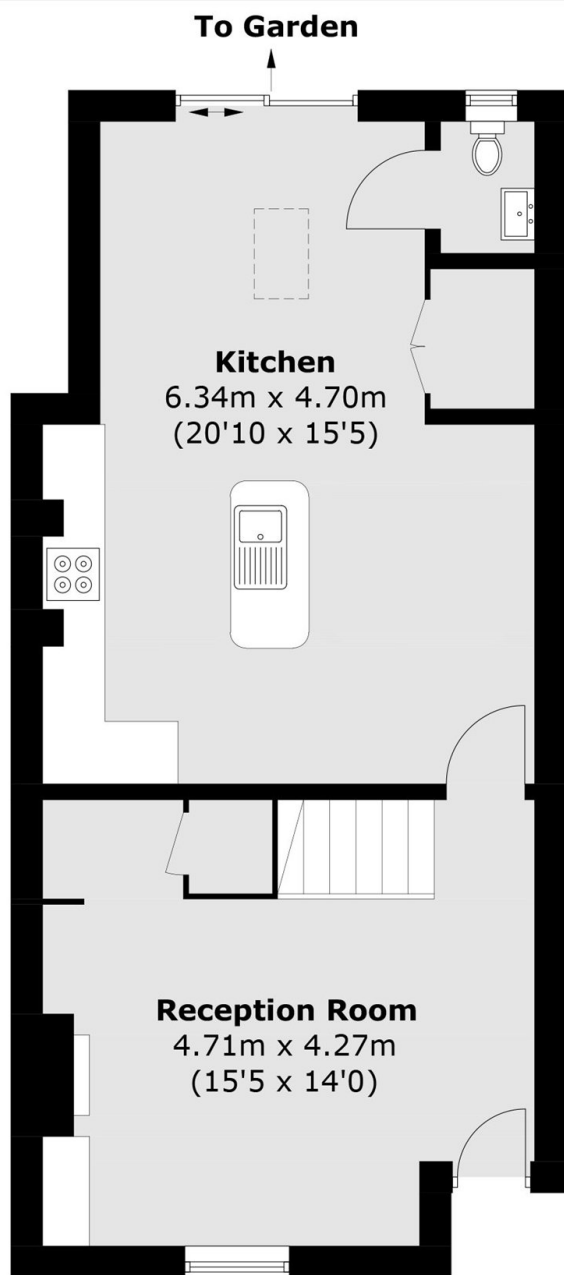
- Victorian Cottage
- Rear Extended
- Open Plan
- Two Bedrooms
- Private Garden
- Beautifully Presented



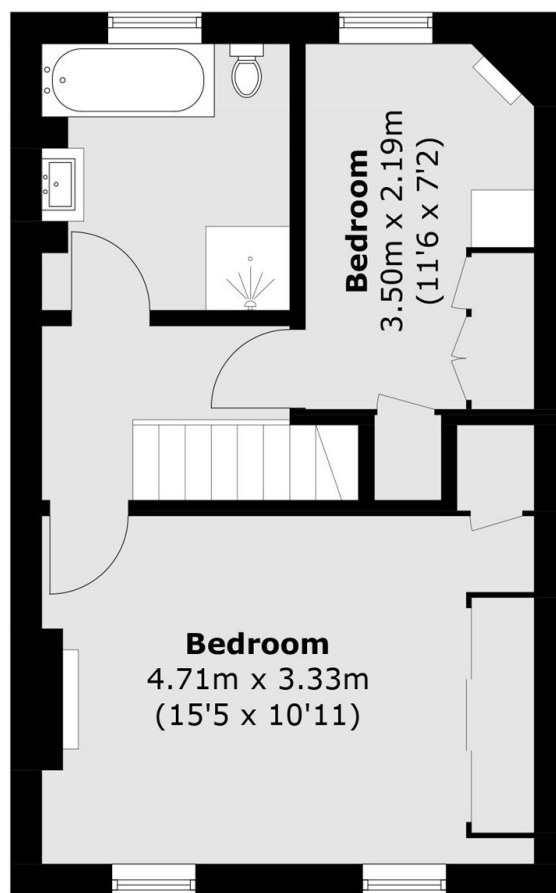




King Charles Crescent, Surbiton, KT5



Ground Floor



First Floor

Total area (approx.): 85.4 sq. m (919.2 sq. ft)